

**This Manual is provided by**  
**CBTricks.com**

Someone who wanted to help you repair your equipment  
scanned this manual.

If you would like to help us put more manuals online support us.

Supporters of CBTricks.com paid for the hosting so you would have this file.

CBTricks.com is a non-commercial personal website was created to help promote the exchange of service, modification, technically oriented information, and historical information aimed at the Citizens Band, GMRS (CB "A" Band), MURS, Amateur Radios and RF Amps.

CBTricks.com is not sponsored by or connected to any Retailer, Radio, Antenna Manufacturer or Amp Manufacturer, or affiliated with any site links shown in the links database. The use of product or company names on my web site is not endorsement of that product or company.

If your company would like to provide technical information to be featured on this site I will put up on the site as long as I can do it in a non-commercial way.

The site is supported with donation from users, friends and selling of the Galaxy Service Manual CD to cover some of the costs of having this website on the Internet instead of relying on banner ads, pop-up ads, commercial links, etc. to pay my costs. Thus I do not accept advertising banners or pop-up/pop-under advertising or other marketing/sales links or gimmicks on my website.

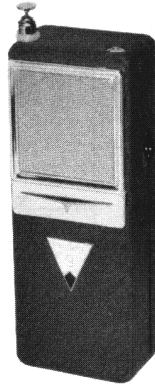
ALL the money from donations is used for CBTricks.com I didn't do all the work to make money (I have a day job). I all didn't do all this work for someone else to make money also, for example the ebay CD sellers.

All Trademarks, Logos, and Brand Names are the property of their respective owners.  
This information is not provided by, or affiliated in any way with any radio or antenna Manufacturers.  
Thank you for any support you can give.



PHOTOFACT<sup>®</sup> with

CIRCUITRACE<sup>®</sup>



TRADE NAME : Triumph Models TC-900, TC-900A  
 SUPPLIER : Custom Importing Company  
 1409-11 Murray Road, N. Kansas City 16, Mo.  
 TYPE SET : 10 Transistor Transceiver  
 POWER SUPPLY : 10.5 Volts DC  
 RATING : 6MA @10.5VDC (Receive, No Sig. Min. Vol.)  
 14MA @10.5VDC (Transmit, Unmodulated)  
 TUNING RANGE : Any one Citizens Band Channels 1 thru 22

TRIUMPH MODELS TC-900, TC-900A

## ALIGNMENT INSTRUCTIONS

### ALIGNMENT INSTRUCTIONS—READ CAREFULLY BEFORE ATTEMPTING ALIGNMENT

Use only enough generator output to provide a usable indication.  
 Best results will be obtained when adjusting A5, A7 and A8 if the antenna normally used is connected, and the unit is as nearly in the cabinet as possible.

#### Suggested Alignment Tools:

A1, A2, A3. . . . . GENERAL CEMENT # 5000, 5003, 5066, 8271, 8272, 8276, 8277, 8290, 8609, 8722, 9150, 9298  
 WALSCO #2515, 2516, 2518, 2519, 2525, 2541  
 A4 thru A8. . . . . GENERAL CEMENT #8282, 8606, 8606-L, 9091  
 WALSCO #2526, 2541, 2542, 2543, 2544

### RECEIVER ALIGNMENT

Connect DC VTVM across volume control

SIGNAL GENERATOR	CHANNEL	ADJUST	REMARKS
High side to antenna terminal, low side to ground. Tune to 455KC (Unmod.)		A1, A2, A3	Adjust for maximum deflection.
High side to antenna terminal, low side to ground. Tune to Channel Frequency (Unmod.)		A4, A5	Adjust for maximum deflection.

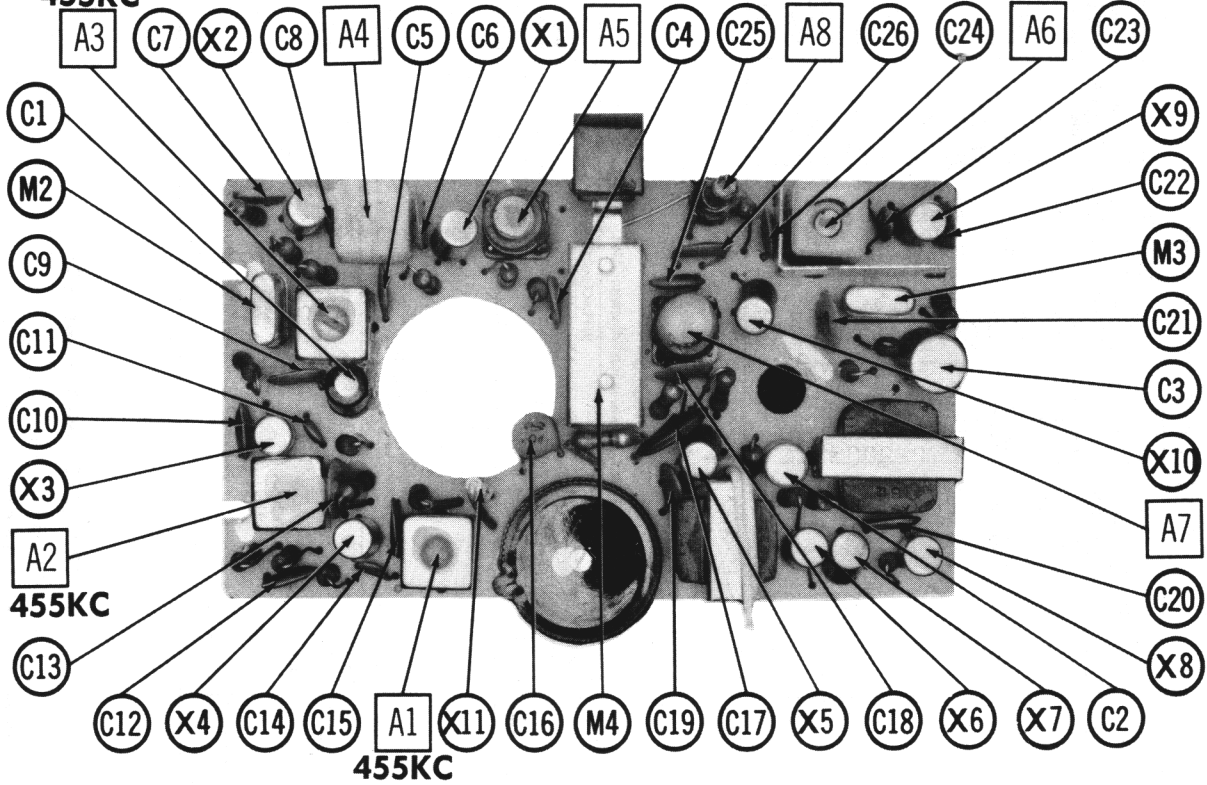
### TRANSMITTER ALIGNMENT

ONLY THOSE PERSONS PROPERLY LICENSED ARE PERMITTED TO MAKE REPAIRS OR ADJUSTMENTS WHICH MAY RESULT IN ILLEGAL OPERATION. (REFER TO FCC RULES & REGULATIONS PART 19, SUBPART D, SECTION 19.71)

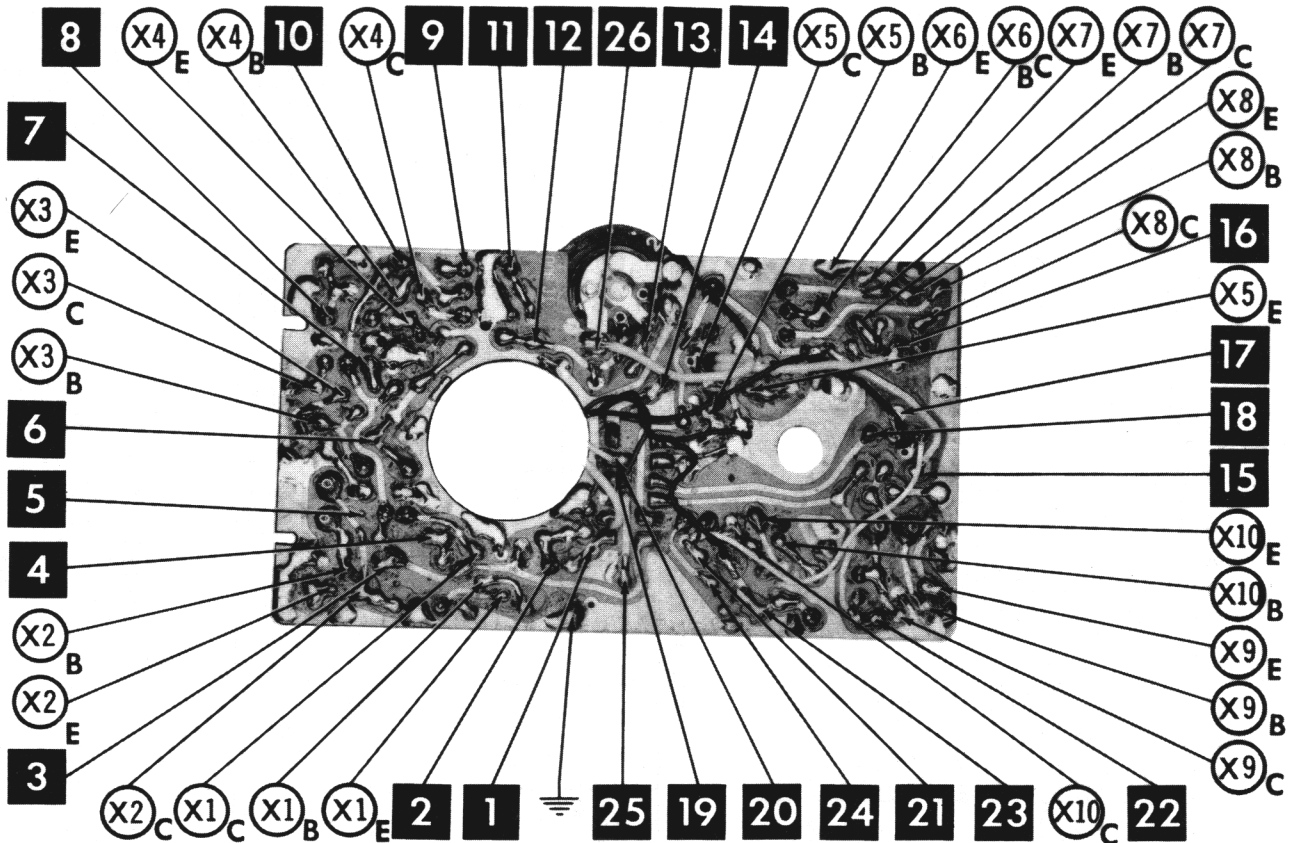
SPECIAL INSTRUCTIONS	INDICATOR	ADJUST	REMARKS
Connect antenna or dummy load.	RF Wattmeter or field strength meter.	A6, A7	Key Transmitter. Adjust for maximum output.
	"	A8	"

**HOWARD W. SAMS & CO., INC.** Indianapolis 6, Indiana

455KC



CHASSIS TOP VIEW - ALIGNMENT, CAPACITOR & MISC. IDENT.



# PARTS LIST AND DESCRIPTION

## TRANSISTORS

ITEM No.	ORIG. TYPE	USE	REPLACEMENT DATA			NOTES
			DELCO PART No.	GENERAL ELECTRIC PART No.	RCA PART No.	
X1	2SA82	Receive Mixer	DS25	GE-1		PNP
X2	2SA103DA †	Receive Oscillator	DS25	GE-1		PNP
X3	2SA12	Receive Oscillator	DS25	GE-1		PNP
X4	2SA101 †	1st IF Amplifier	DS25	GE-1		PNP
X5	2SA101 †	2nd IF Amplifier	DS25	GE-1		PNP
X6	2SB75	Driver	DS26	GE-2	2N408	PNP
X7	2SB77	Bias Regulator	DS26	GE-2	2N406	PNP
X8	2SB77	Output-Modulator	DS26	GE-2	2N408	PNP
X9	2SA80	Output-Modulator	DS26	GE-2	2N408	PNP
X10	2SA103DA †	Transmit Oscillator	DS25	GE-1		PNP
	2SA246	Final Amplifier				PNP

† Used in Model TC-900A

## POWER RECTIFIERS & SIGNAL DIODES

ITEM No.	CURRENT RATING (Measured)	ORIGINAL Part or Type No.	RECTIFIERS		NOTES
			RCA PART No.	SARKES TARZIAN PART No.	
X11		1N60			Detector (Alternates 1NA4, 1N34A, OA70)

## ELECTROLYTIC CAPACITORS

ITEM No.	RATING CAP. VOLT.	TRIUMPH PART No.	AEROVOX PART No.	REPLACEMENT DATA				
				CORNELL-DUBILIER PART No.	GENERAL ELECTRIC PART No.	MALLORY PART No.	PYRAMID PART No.	SPRAGUE PART No.
C1	30	VF306	PTT10	NLW30-6	MTI-13	TF6X30	MLV30-6	TE-1092
C2	30	VF306	PTT10	NLW30-6	MTI-13	TF6X30	MLV30-6	TE-1092
C3	50			NLW50-15	MTI-16		MLV50-15	TE-1133

## FIXED CAPACITORS

ITEM No.	RATING	REMARKS	REPLACEMENT DATA				
			AEROVOX PART No.	CORNELL-DUBILIER PART No.	ELMENCO PART No.	MALLORY PART No.	SPRAGUE PART No.
C4	.01		TTD-01	DM-103		TA-110	TG-S10
C5	.01		TTD-01	DM-103		TA-110	TG-S10
C6	.02		TTD-02	DA-203		TA-120	TG-S20

## FIXED CAPACITORS (cont)

ITEM No.	RATING	REMARKS	REPLACEMENT DATA						
			AEROVOX PART No.	CENTRALAB PART No.	CORNELL-DUBILIER PART No.	ELMENCO PART No.	MALLORY PART No.	SPRAGUE PART No.	
C7	.01		TTD-01	DM-103	H05S1	CCD-300	TA-110	TG-S10	
C8	.02		TTD-02	DA-203	H05S2	CCD-050	TA-120	TG-S20	
C9	.02		TTD-02	DA-203	H05S2	CCD-050	TA-120	TG-S20	
C10	.02		TTD-02	DA-203	H05S2	CCD-050	TA-120	TG-S20	
C11	.02		TTD-02	DA-203	H05S2	CCD-050	TA-120	TG-S20	
C12	.02		TTD-02	DA-203	H05S2	CCD-050	TA-120	TG-S20	
C13	.02		TTD-02	DA-203	H05S2	CCD-050	TA-120	TG-S20	
C14	.02		TTD-02	DA-203	H05S2	CCD-050	TA-120	TG-S20	
C15	.02		TTD-02	DA-203	H05S2	CCD-050	TA-120	TG-S20	
C16	.01		TTD-01	DM-103	H05S1	CCD-050	TA-120	TG-S10	
C17	.1	(.5) †	TTD-01	DM-103	H05S1	CCD-050	TA-120	TG-S10	
C18	.02		TTD-02	DA-203	H05S2	CCD-050	TA-120	TG-S20	
C19	.02		TTD-02	DA-203	H05S2	CCD-050	TA-120	TG-S20	
C20	.02		TTD-02	DA-203	H05S2	CCD-050	TA-120	TG-S20	
C21	.02		TTD-02	DA-203	H05S2	CCD-050	TA-120	TG-S20	
C22	.01		TTD-01	DM-103	H05S1	CCD-390	TA-110	TG-S10	
C23	.40	(30) †	DI-39	DD-390	L10Q39	CCD-390	TA-110	TG-S10	
C24	.01		TTD-01	DM-103	H05S1	CCD-390	TA-110	TG-S10	
C25	.30	(10) †	TTD-01	DM-103	H05S1	CCD-390	TA-110	TG-S10	
C26	.02		TTD-02	DA-203	H05S2	CCD-390	TA-110	TG-S10	

† Alternate Value.

## CONTROLS

All wattages 1/2 watt, or less, unless otherwise listed.

ITEM No.	USE	RESISTANCE	REPLACEMENT DATA			
			TRIUMPH PART No.	CENTRALAB PART No.	CLAROSTAT PART No.	CTS-IRC PART No.
R1	Volume & Switch	10K	DX-VC			

## COILS (RF-IF)

ITEM No.	USE	TRIUMPH PART No.	REPLACEMENT DATA			
			Merit PART No.	Miller PART No.	Stancor PART No.	Workman PART No.
L1	Receiver Ant.	DX-AA				
L2	Receiver Osc.	DX-OSA				
L3	1st IF	DX-IN	BC-574			
L4	2nd IF	DX-IS	BC-575			
L5	3rd IF	DX-OT	BC-576			
L6	Transmit Osc.	DX-OA				
L7	Final	DX-TA				
L8	Ant. Load	DX-AL				

## TRANSFORMER (DRIVER)

ITEM No.	TURNS RATIO	REPLACEMENT DATA			
		TRIUMPH PART No.	MERIT PART No.	STANCOR THORNTON PART No.	TRIAD PART No.
T1	1.2 1	DX-IT			

ITEM No.	RATING	REMARKS	REPLACEMENT DATA				
			AEROVOX PART No.	CORNELL-DUBILIER PART No.	ELMENCO PART No.	MALLORY PART No.	SPRAGUE PART No.
C4	.01		TTD-01	DM-103		TA-110	TG-S10
C5	.01		TTD-01	DM-103		TA-110	TG-S10
C6	.02		TTD-02	DA-203		TA-120	TG-S20

# PARTS LIST AND DESCRIPTION (CONTINUED)

## TRANSFORMER (AUDIO OUTPUT)

ITEM No.	IMPEDANCE		REPLACEMENT DATA				NOTES
	PRI.	SEC. 1	Triumph Part No.	Stancor Part No.	Thordarson Part No.	Triad Part No.	
T2	7000	6-80	DX-MT				
		SEC. 2					
		9000					

## SPEAKER

ITEM No.	TYPE	REPLACEMENT DATA		NOTES
		TRIUMPH Part No.	OUJAM Part No.	
SPI	FIELD 2 1/4" PM 6-80	DX-S		

## BATTERIES

ITEM No.	VOLTAGE	TRIUMPH Part No.	REPLACEMENT DATA			NOTES
			BURGESS	EVEREADY	MALLORY	
M1	1 1/2 V	930	"A"	"B"	"A"	M-15R 7 Required

## MISCELLANEOUS

ITEM No.	PART NAME	TRIUMPH Part No.	NOTES
M2	Crystal	DX-R7	Receive (Channel 7 Only)
M3	Crystal	DX-T7	Transmit (Channel 7 Only)
M4	Crystal Switch	DX-PT	Receive-Transmit (Spring-Loaded Slide Type)
	Antenna	DX-CA	Telescoping

## CABINETS & CABINET PARTS

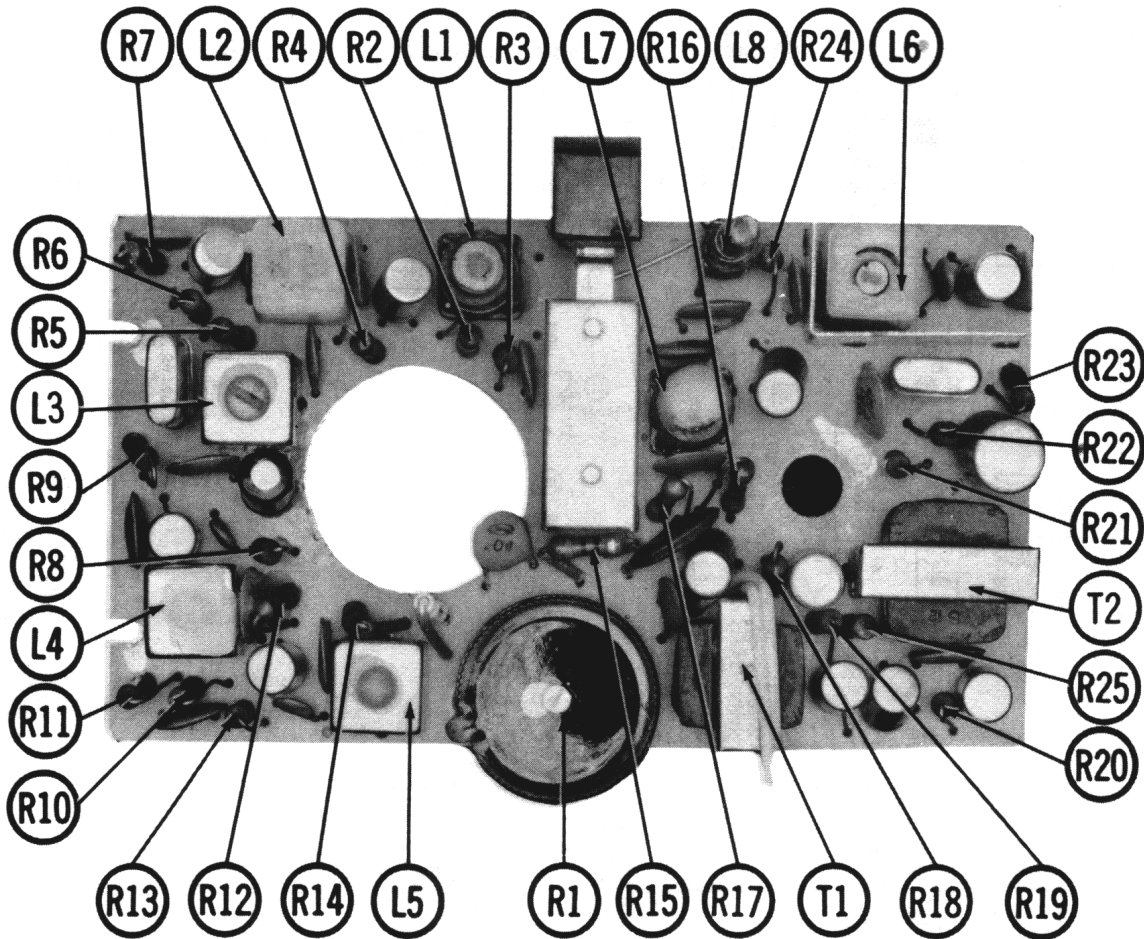
(When Ordering Cabinets & Cabinet Parts, Specify Model, Chassis & Color)

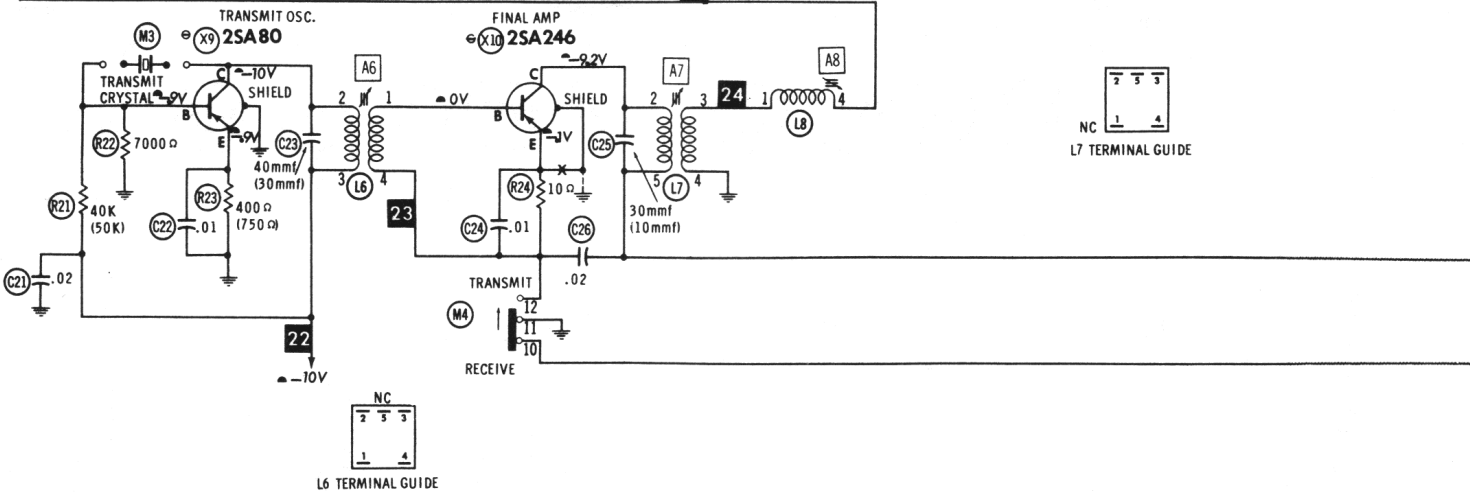
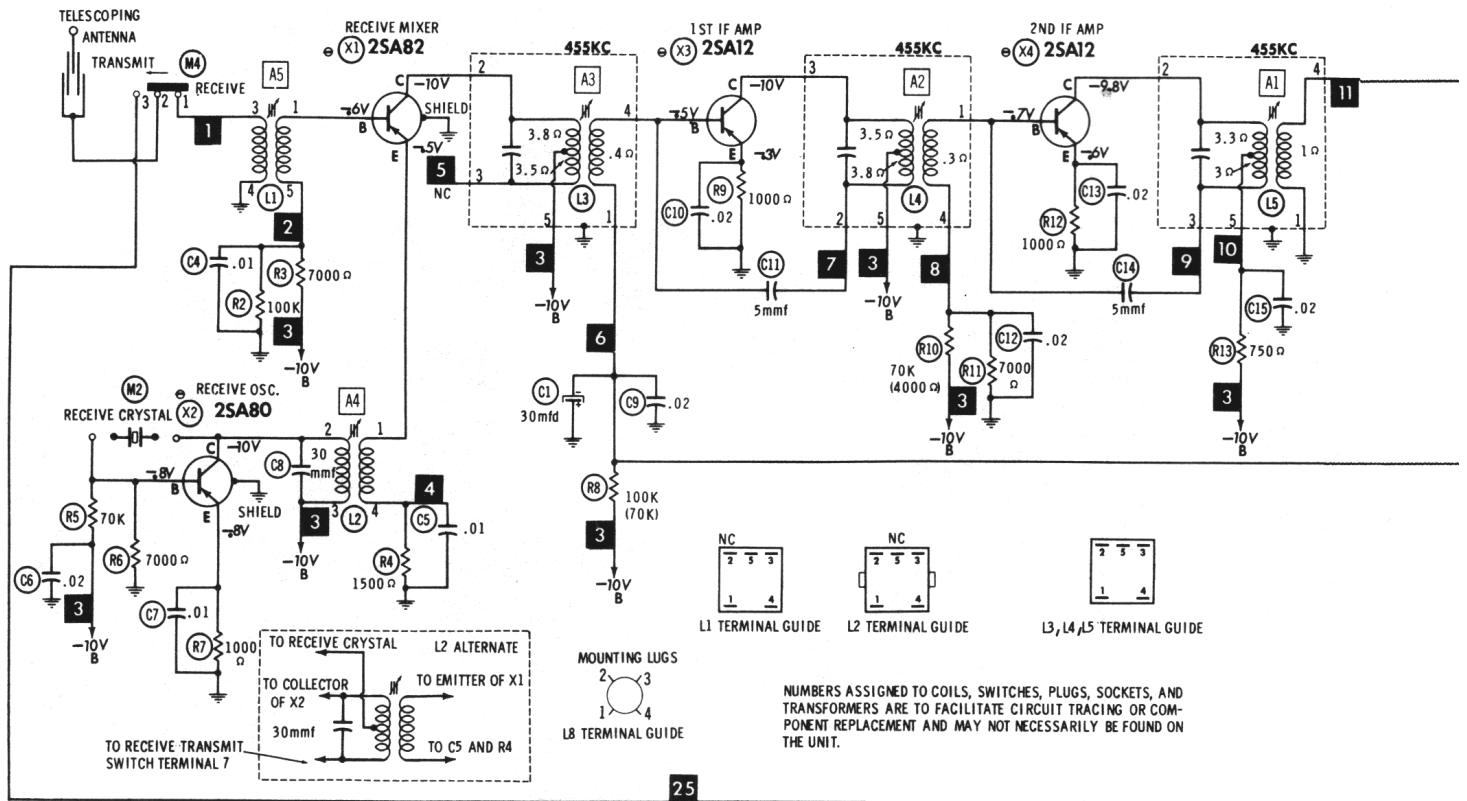
NAME	PART NO.	DESCRIPTION
Push Button	DX-SB	
Knob	DX-VCB	Volume
Case	DX-MC	Metal

## WIRING DATA

General-use Hook-up Wire	Use BELDEN No. 8530 (Solid) Available in 12 Colors
Shielded Antenna Lead	8524 (Stranded) Available in 12 Colors
	8214 (Lowest Loss (RG-8/U Type)
	8237 (Low Loss (RG-8/U)
	8240 (Solid) Miniature (RG-58/U)
Coiled Microphone Cable	8259 (Stranded) Miniature (RG-58/U)
	8499 (Single Conductor Shielded (Neoprene)
Ignition Noise Suppression	8498 (Single Conductor Shielded (Vinyl)
Bonding Strap	Use BELDEN No. 7300-Series Spark-Plug Sets
	Use BELDEN No. 8661 (3/8 In.)

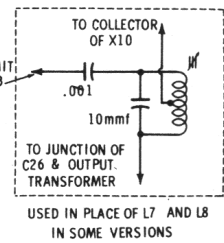
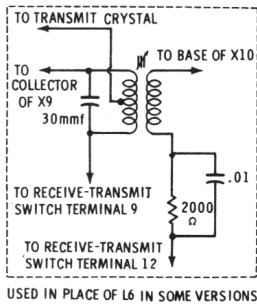
# CHASSIS—TOP VIEW RESISTOR & INDUCTOR IDENT.

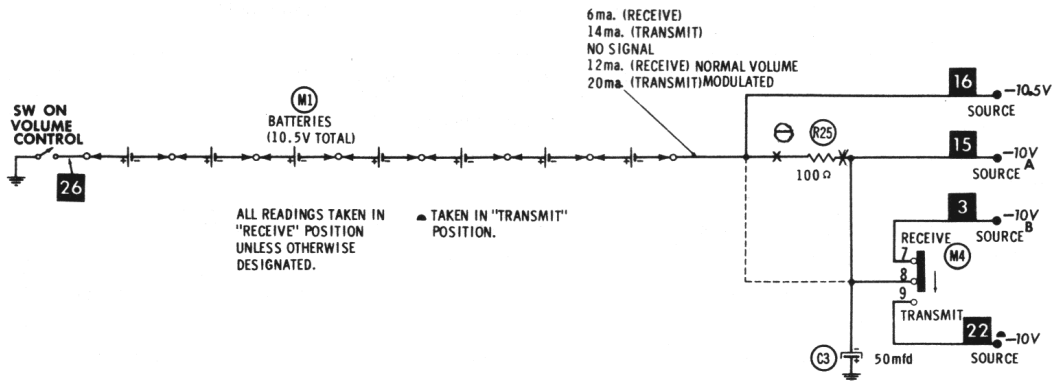
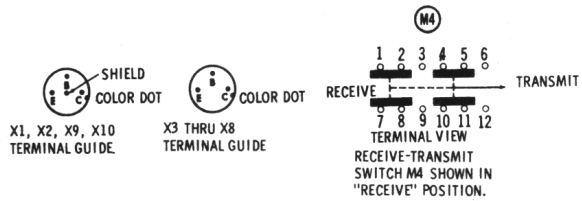
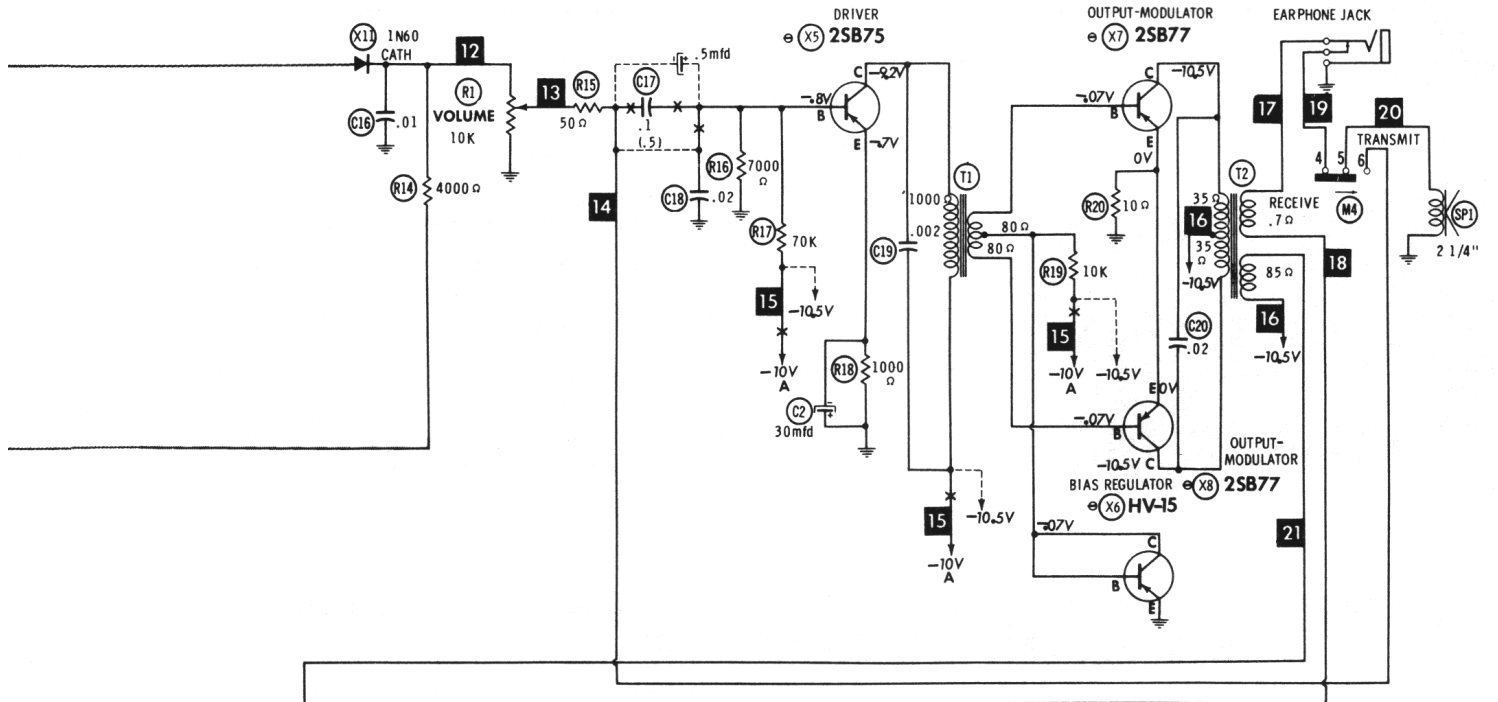




SEE PARTS LIST FOR ALTERNATE VALUE OR APPLICATION

- RESISTANCE MEASUREMENTS NOT GIVEN BECAUSE OF THE WIDE VARIATION IN INTERNAL TRANSISTOR RESISTANCE.
- DC voltage measurements taken with vacuum tube voltmeter.
  - Socket connections or transistor terminals are shown as bottom views.
  - Measured values are from socket pin or terminal to common ground.
  - Nominal tolerance on component values makes possible a variation of  $\pm 15\%$  in voltage and resistance readings.
  - Volume control at maximum, no signal applied for voltage measurements.





**TRIUMPH  
MODELS TC-900, TC-900A**