

This Manual is provided by
CBTricks.com

Someone who wanted to help you repair your equipment
scanned this manual.

If you would like to help us put more manuals online support us.

Supporters of CBTricks.com paid for the hosting so you would have this file.

CBTricks.com is a non-commercial personal website was created to help promote the exchange of service, modification, technically oriented information, and historical information aimed at the Citizens Band, GMRS (CB "A" Band), MURS, Amateur Radios and RF Amps.

CBTricks.com is not sponsored by or connected to any Retailer, Radio, Antenna Manufacturer or Amp Manufacturer, or affiliated with any site links shown in the links database. The use of product or company names on my web site is not endorsement of that product or company.

If your company would like to provide technical information to be featured on this site I will put up on the site as long as I can do it in a non-commercial way.

The site is supported with donation from users, friends and selling of the Galaxy Service Manual CD to cover some of the costs of having this website on the Internet instead of relying on banner ads, pop-up ads, commercial links, etc. to pay my costs. Thus I do not accept advertising banners or pop-up/pop-under advertising or other marketing/sales links or gimmicks on my website.

ALL the money from donations is used for CBTricks.com I didn't do all the work to make money (I have a day job). I all didn't do all this work for someone else to make money also, for example the ebay CD sellers.

All Trademarks, Logos, and Brand Names are the property of their respective owners.
This information is not provided by, or affiliated in any way with any radio or antenna Manufacturers.
Thank you for any support you can give.

PHOTOFACT® Folder

with CIRCUITRACE®

**SPOKESMAN
MODEL 700**



NOTICE

ONLY THOSE PERSONS PROPERLY LICENSED ARE PERMITTED TO MAKE REPAIRS OR ADJUSTMENTS WHICH MAY RESULT IN ILLEGAL OPERATION. (REFER TO FCC RULES & REGULATIONS PART 19, SUBPART D, SECTION 19.71).

**SPOKESMAN
MODEL 700**

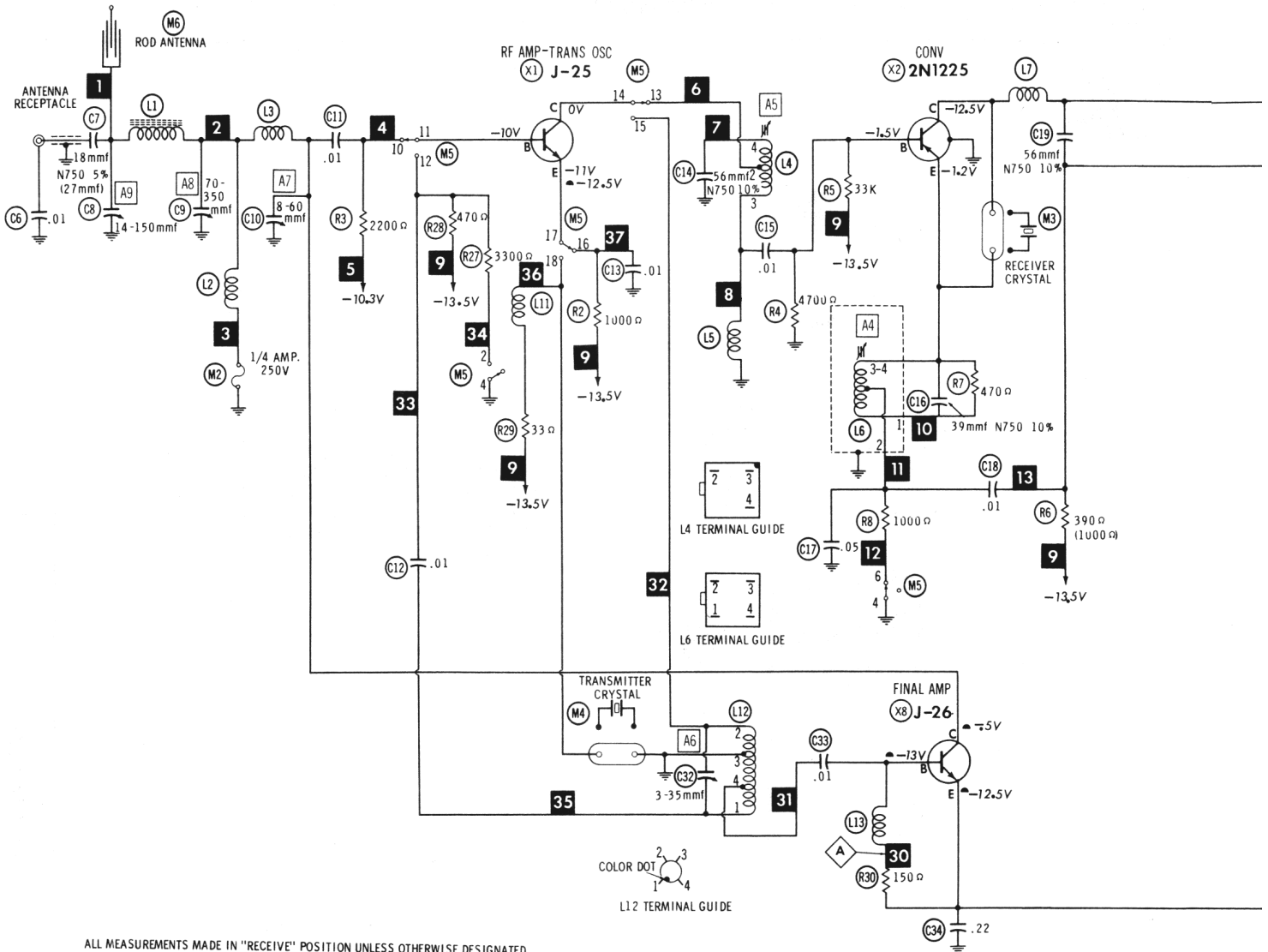
TRADE NAME	Spokesman Model 700
MANUFACTURER	Ray Jefferson Inc., Subsidiary of Jetronic Industries Inc., Main & Cotton St., Philadelphia 27, Pa.
TYPE SET	8 Transistor Single Band Portable Citizens Band Transmitter-Receiver
POWER SUPPLY	13.5 Volts DC, Self Contained 12 Volts DC, Accessory Adapter Model 750 110 Volts DC, Accessory Adapter Model 760
RATING	10 MA @ 12 Volts DC (Receive), 180 MA @ 12 Volts DC (Transmit)
TUNING RANGE	Any One of Citizens Band Channels 1 thru 23

HOWARD W. SAMS & CO., INC. Indianapolis 6, Indiana



The listing of any available replacement part herein does not constitute in any case a recommendation, warranty or guaranty by Howard W. Sams & Co., Inc., as to the quality and suitability of such replacement part. The numbers of these parts have been compiled from information furnished to Howard W. Sams & Co., Inc., by the manufacturers of LY279

the particular type of replacement part listed. Reproduction or use, without express permission, of editorial or pictorial content, in any manner, is prohibited. No patent liability is assumed with respect to the use of the information contained herein. © 1962 Howard W. Sams & Co., Inc., Indianapolis 6, Indiana. Printed in U.S. of America



ALL MEASUREMENTS MADE IN "RECEIVE" POSITION UNLESS OTHERWISE DESIGNATED.
 ▲ MEASURED IN "TRANSMIT" POSITION.

NUMBERS ASSIGNED TO COILS, SWITCHES, PLUGS, SOCKETS, AND TRANSFORMERS ARE TO FACILITATE CIRCUIT TRACING OR COMPONENT REPLACEMENT AND MAY NOT NECESSARILY BE FOUND ON THE UNIT.

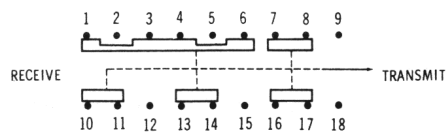
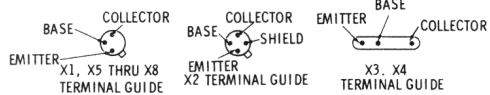
● SEE PARTS LIST FOR ALTERNATE VALUE OR APPLICATION

DC COIL RESISTANCE VALUES UNDER ONE OHM NOT SHOWN ON SCHEMATIC DIAGRAM

1. DC voltage measurements taken with vacuum tube voltmeter.
2. Socket connections or transistor terminals are shown as bottom views.
3. Measured values are from socket pin or terminal to common ground.
4. Nominal tolerance on component values makes possible a variation of ±15% in voltage and resistance readings.
5. Volume control at maximum, no signal applied for voltage measurements.

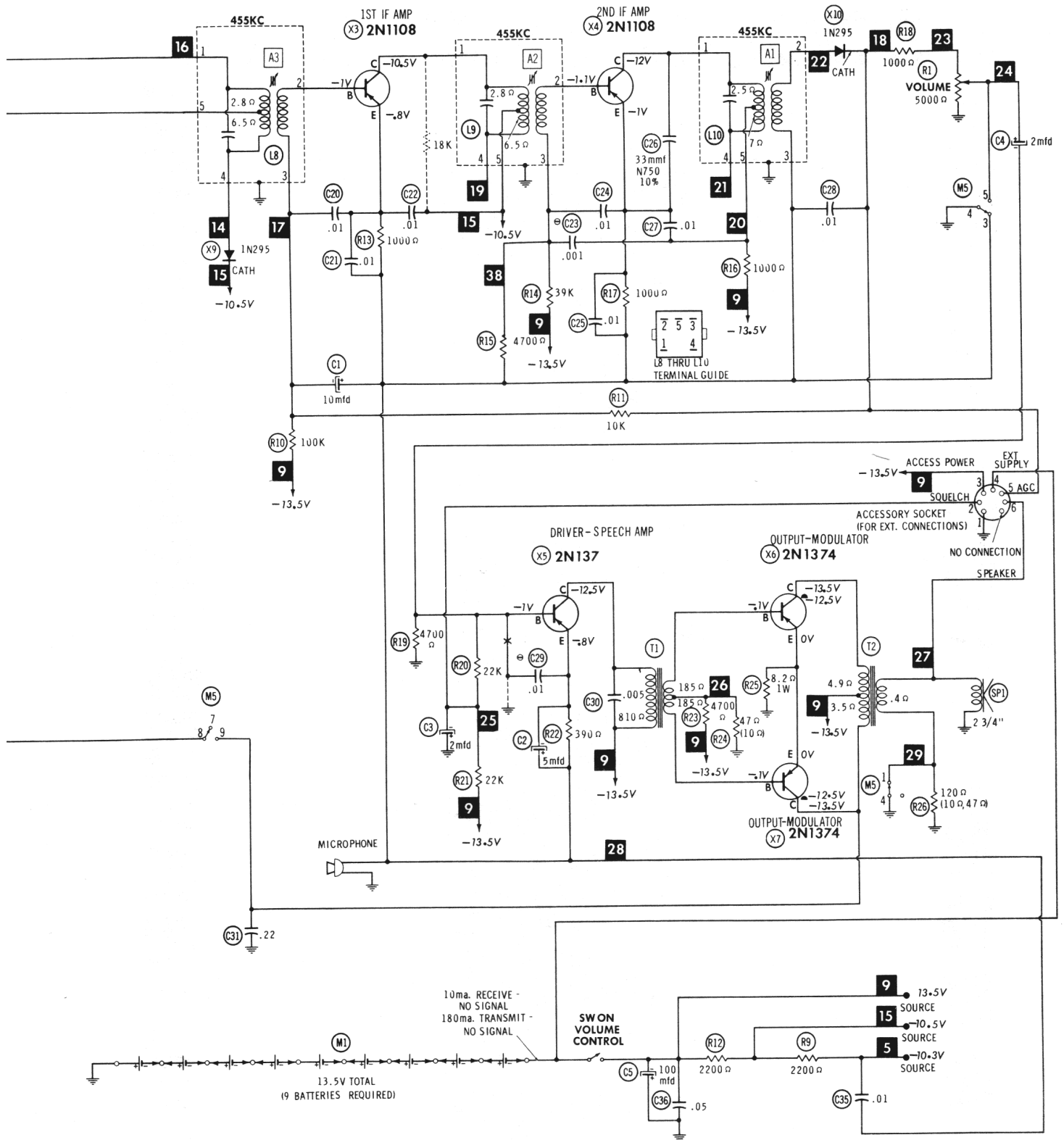
A PHOTOFACIT STANDARD NOTATION SCHEMATIC with **CIRCUITRACE**

© Howard W. Sams & Co., Inc. 1962

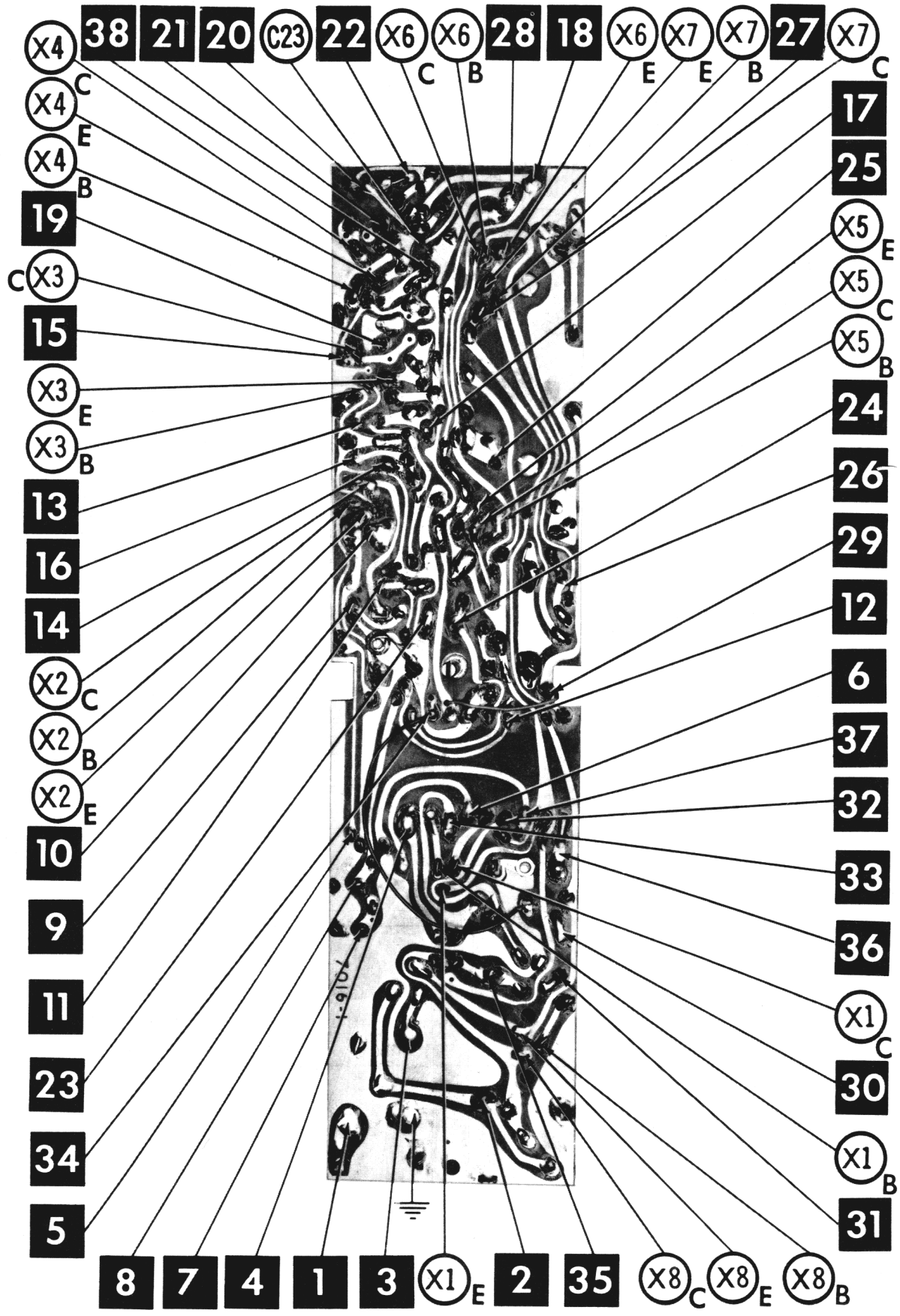


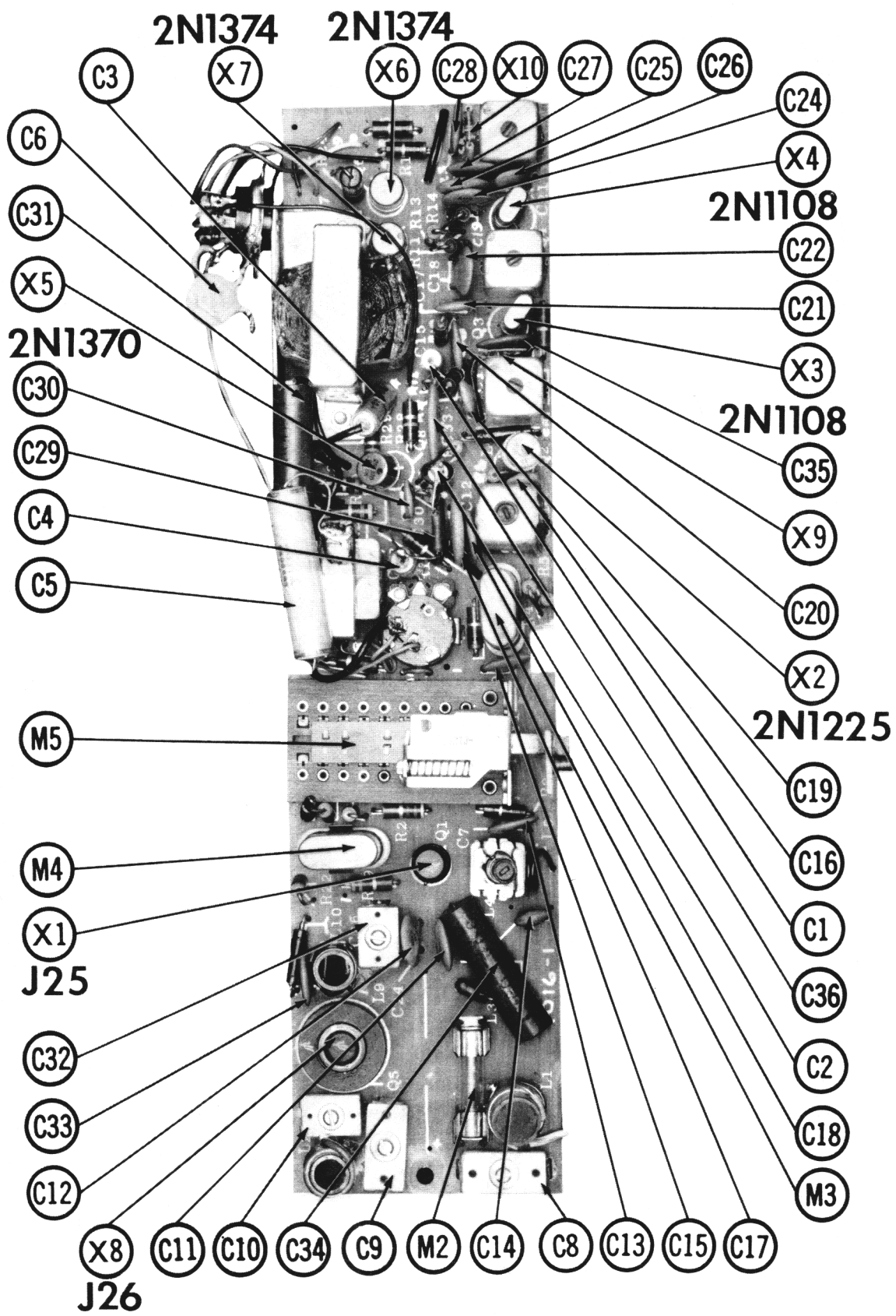
"TRANSMIT - RECEIVE" PUSHBUTTON M5" SHOWN IN "RECEIVE" POSITION.

RESISTANCE MEASUREMENTS NOT GIVEN BECAUSE OF THE WIDE VARIATION IN INTERNAL TRANSISTOR RESISTANCE.

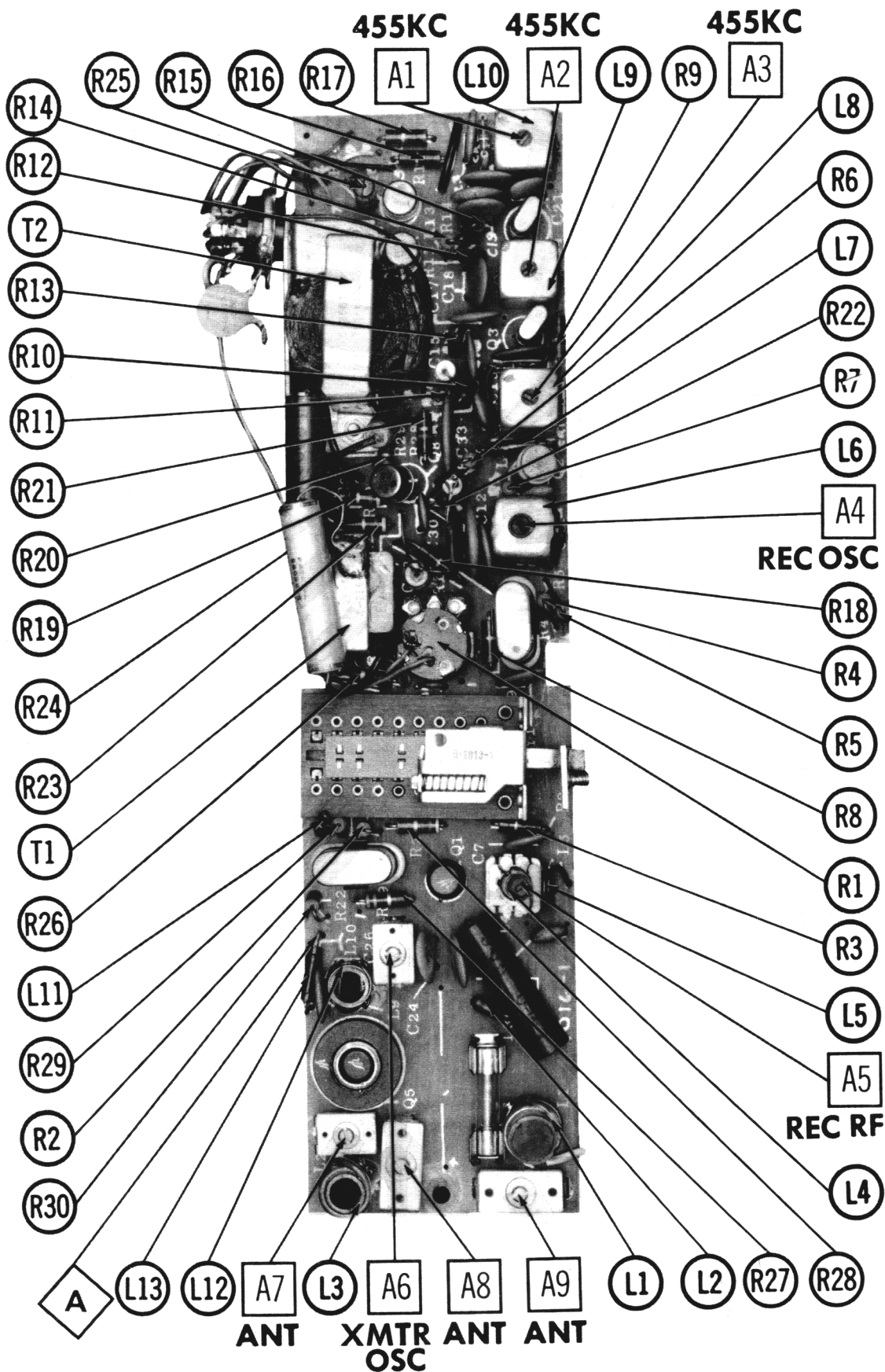


**SPOKESMAN
MODEL 700**





PRINTED BOARD - CAPACITOR, TRANSISTOR & MISC. IDENT.



PRINTED BOARD - ALIGNMENT, INDUCTOR & RESISTOR IDENT.

ALIGNMENT INSTRUCTIONS

ALIGNMENT INSTRUCTIONS—READ CAREFULLY BEFORE ATTEMPTING ALIGNMENT

Suggested Alignment Tools: A1 thru A9 GENERAL CEMENT #5009, 8195, 8274, 8275, 8728, 8729, 8987, 8988, 8989
WALSCO #2515, 2531, 2532

RECEIVER ALIGNMENT

Connect VTVM across volume control.

SIGNAL GENERATOR	CHANNEL	ADJUST	REMARKS
1. Tune to 455KC (Unmod.) High side to base of X2, common to ground.		A1, A2, A3	Remove Receiver crystal. Adjust for maximum deflection, Reinsert crystal.
2. Tune to crystal freq. High side to antenna receptacle, low side to ground.	Highest Channel Used.	A4	Adjust for maximum deflection by rocking A4. Note rate of dropoff and set just below peak on side of gradual dropoff.
3. "	"	A5	Adjust for maximum deflection. Repeat steps 2 & 3.

TRANSMITTER ALIGNMENT

Best results are obtained when the antenna to be used is connected to the unit, and the chassis is as nearly in the cabinet as possible.
Output frequency should be checked by an accurately calibrated secondary frequency standard to be sure frequency is within .005%.

ONLY THOSE PERSONS PROPERLY LICENSED ARE PERMITTED TO MAKE REPAIRS OR ADJUSTMENTS WHICH MAY RESULT IN ILLEGAL OPERATION. (REFER TO FCC RULES & REGULATIONS PART 19, SUBPART D, SECTION 19.71)

SPECIAL INSTRUCTIONS	INDICATOR	ADJUST	REMARKS
4. Connect suitable load to antenna receptacle.	DC VTVM between point Δ and ground.	A6	Adjust for maximum deflection while rocking A6. Note rate of dropoff. Set just below peak on side of gradual dropoff.
5. "	RF wattmeter or field strength meter.	A7, A8, A9	Adjust for maximum deflection. Repeat adjustments.

PARTS LIST AND DESCRIPTIONS TRANSISTORS

ITEM No.	ORIG. TYPE	USE	REPLACEMENT DATA		NOTES
			RCA PART No.	RAYTHEON PART No.	
X1	J-25	RF Amp. -Trans. Osc.			NPN
X2	2N1225	Converter	2N1525		PNP
X3	2N1108	1st IF Amplifier	2N1525		PNP
X4	2N1108	2nd IF Amplifier	2N591		PNP
X5	2N1370	Driver-Speech Amp.	2N362		PNP
X6	2N1374	Output-Modulator	2N632		PNP
X7	2N1374	Output-Modulator	2N632		PNP
X8	J-26	Final Amp.			NPN

POWER RECTIFIERS & SIGNAL DIODES

ITEM No.	CURRENT RATING (Measured)	ORIGINAL Part or Type No.	RECTIFIERS		NOTES
			SARKES TARZIAN PART No.	GENERAL ELECTRIC PART No.	
X9		IN285		IN295A	Overload Detector-AVC
X10		IN285		IN295A	

ELECTROLYTIC CAPACITORS

ITEM No.	RATING CAP.	VOLT.	SPOKESMAN PART No.	REPLACEMENT DATA				
				AEROVOX PART No.	CORNELL-DUBIER PART No.	GENERAL ELECTRIC PART No.	SPRAGUE PART No.	
C1	10	6	PTT23	NLW10-6	MTI-5	TT6X10	MLV10-6	TE-1087
C2	5	6	PTT21	NLW5-15	MTI-3	T76X5	MLV5-6	TE-1084
C3	2	15	PTT62	NLW2-50	MTI-1	TC302	MLV2-50	TE-1149
C4	2	15	PTT62	NLW2-50	MTI-1	TC302	MLV2-50	TE-1149
C5	100	25	PTT86	NLW100-25	MTI-20	TC2501	TD-100-25	TE-1211

FIXED CAPACITORS

ITEM No.	RATING	REMARKS	REPLACEMENT DATA					
			AEROVOX PART No.	CENTRALAB PART No.	CORNELL-DUBIER PART No.	ELMENDO PART No.	MALLORY PART No.	SPRAGUE PART No.
C6	.01	(27) †	BFD-01	DD-103	BYA10S1	CCD-103	B-110	5HK-S10
C7	18 N750 5%			TCN-18	C10Q18U	424	CNT-418	10TCU-Q18
C8	14-150					428		
C9	70-350					404		
C10	8-60							
C11	.01		BFD-01	DD-103	BYA10S1	CCD-103	B-110	5HK-S10
C12	.01		BFD-01	DD-103	BYA10S1	CCD-103	B-110	5HK-S10
C13	.01		BFD-01	DD-103	BYA10S1	CCD-103	B-110	5HK-S10
C14	56 N750 10%		BFD-01	TCN-56	C10Q56U	CCTN-560	CNT-456	10TCU-Q56
C15	.01		BFD-01	DD-103	BYA10S1	CCD-103	B-110	5HK-S10
C16	39 N750 10%		BFD-05	TCN-39	C10Q39U	CCTN-390	CNT-439	10TCU-Q39
C17	.05		BFD-01	DD-103	BYA10S1	CCD-103	BT-150	5HK-S50
C18	.01		BFD-01	DD-103	BYA10S1	CCD-103	BT-150	5HK-S50
C19	56 N750 10%		BFD-01	TCN-56	C10Q56U	CCTN-560	CNT-456	10TCU-Q56
C20	.01		BFD-01	DD-103	BYA10S1	CCD-103	B-110	5HK-S10
C21	.01		BFD-01	DD-103	BYA10S1	CCD-103	B-110	5HK-S10
C22	.01		BFD-01	DD-103	BYA10S1	CCD-103	B-110	5HK-S10
C23	.001	Note 1	BFD-001	DD-102	BYA10D1	CCD-102	B-210	5HK-D10
C24	.01		BFD-01	DD-103	BYA10S1	CCD-103	B-110	5HK-S10
C25	.01		BFD-01	DD-103	BYA10S1	CCD-103	B-110	5HK-S10
C26	33 N750 10%		BFD-01	DTN-33	C10Q33U	CCTN-330	CNT-433	10TCU-Q33
C27	.01		BFD-01	DD-103	BYA10S1	CCD-103	B-110	5HK-S10
C28	.01		BFD-01	DD-103	BYA10S1	CCD-103	B-110	5HK-S10
C29	.01	Note 1	BFD-01	DD-103	BYA10S1	CCD-103	B-110	5HK-S10
C30	.005		BFD-005	DD-502	BYA10D5	CCD-502	B-250	5HK-D50
C31	22 100V		P288N-22		CUB2P22	IDP-3-224	GEM-2022	2TM-P22
C32	3-35		BFD-01	DD-103	BYA10S1	CCD-103	B-110	5HK-S10
C33	.01		P288N-22		CUB2P22	IDP-3-224	GEM-2022	2TM-P22
C34	22 100V		BFD-01	DD-103	BYA10S1	CCD-103	B-110	5HK-S10
C35	.01		BFD-05	DD-503	CUB2S5	IDP-2-503	BT-150	5HK-S50
C36	.05		BFD-05	DD-503	CUB2S5	IDP-2-503	BT-150	5HK-S50

Note 1. Not used in some versions.
† Alternate Value.

PARTS LIST AND DESCRIPTIONS (Continued)

CONTROLS

All wattages 1/2 watt, or less, unless otherwise listed.

ITEM No.	USE	REPLACEMENT DATA				
		SPOKESMAN PART No.	CENTRALAB PART No.	CLAROSTAT PART No.	CTS-IRC PART No.	MALLORY PART No.
R1	Volume & Switch	5000G	B-1924			

RESISTORS

All wattages 1/2 watt, or less, unless otherwise listed.

ITEM No.	RATING	REPLACEMENT DATA		ITEM No.	RATING	REPLACEMENT DATA		REMARKS
		WORKMAN PART No.	IRC PART No.			WORKMAN PART No.	IRC PART No.	
R2	1000G			R17	1000G			
R3	2200G			R18	1000G			
R4	4700G			R19	4700G			
R5	33K			R20	22K			
R6	390G			R21	22K			
R7	470G			R22	390G			
R8	1000G			R23	4700G			
R9	2200G			R24	4700G			
R10	100K			R25	5.2K 1W			
R11	10K			R26	120G			
R12	2200G			R27	3500G			
R13	1000G			R28	470G			
R14	39K			R29	510G			
R15	4700G			R30	150G			
R16	1000G							(100)* (100, 470)*

* Alternate Value.

COILS (RF-IF)

ITEM No.	USE	REPLACEMENT DATA				NOTES
		SPOKESMAN PART No.	Merit PART No.	Miller PART No.	Stancor PART No.	
L1	Ant.	B-1940				
L2	RF Choke (2.2uh)	B-1996	BC-583	4606	RTC-8517	T857
L3	Ant, Matching	B-1936				
L4	RF	B-1932				
L5	RF Choke	B-1998				
L6	Osc.	B-1983				
L7	RF Choke (2.2uh)	B-1995	BC-583	4606	RTC-8517	T857
L8	1st IF	B-1937-1				
L9	2nd IF	B-1937-2				
L10	3rd IF	B-1995				
L11	RF Choke (2.2uh)	B-1935	BC-583	4606	RTC-8517	T857
L12	Osc.	B-1985				
L13	RF Choke (2.2uh)	B-1985	BC-583	4606	RTC-8517	T857

TRANSFORMER (DRIVER)

ITEM No.	TURNS RATIO	REPLACEMENT DATA				NOTES
		SPOKESMAN PART No.	Merit PART No.	Thordarson PART No.	Triad PART No.	
T1	1:5	C-2562-1				

TRANSFORMER (AUDIO OUTPUT)

ITEM No.	IMPEDANCE	REPLACEMENT DATA				NOTES
		SPOKESMAN PART No.	Merit PART No.	Stancor PART No.	Thordarson PART No.	
T2	7500G CT	3-4G	C-2561-1			

SPEAKER

ITEM No.	TYPE	REPLACEMENT DATA		NOTES
		SPOKESMAN PART No.	QUAM PART No.	
SP1	2 3/4" PM	3-4G	C2565	27A06

BATTERIES

ITEM No.	VOLTAGE	SPOKESMAN PART No.	REPLACEMENT DATA				NOTES
			BURGESS "A"	"B"	EVEREADY "A"	"B"	
M1	13.5V		1		635	M-14P or Min-1400	9 Used

FUSES

ITEM No.	TYPE	RATING	REPLACEMENT DATA				NOTES
			SPOKESMAN PART No.	LITTELFUSE PART No.	FUSE HOLDER	FUSE HOLDER	
M2	BAG	1/4 Amp 250V		362.250 (9AG 1/4A 250V)	101001	AGX 1/4	4503

MISCELLANEOUS

ITEM No.	PART NAME	SPOKESMAN PART No.	NOTES
M3	Crystal	C-2594	Receiver
M4	Crystal	C-2563	Transmitter
M5	Switch	B-1913	Pushbutton (Transmit-Receiver)
M6	Antenna Rod	B-7020	
	Printed Board	D-6004	
	Microphone	C-2564	
	Battery Holder Ass'y	D-4098	Complete

CABINETS & CABINET PARTS

(When Ordering Cabinets & Cabinet Parts, Specify Model, Chassis & Color)

NAME	PART NO.	DESCRIPTION
Knob	B-1926	Push Rotary
Case, Front	B-1924	
Case, Rear	D-4086	Front
Case, Ass'y.	C-2591	Rear
Case, Ass'y.	C-2592	
Handle	B-7001	

WIRING DATA

General-use Unshielded Hook-up Wire	Use BELDEN No.	Available in
	8530 (Solid 22AWG)	12 Colors
	8534 (Stranded 22AWG)	
	8570 (Stranded 26AWG)	