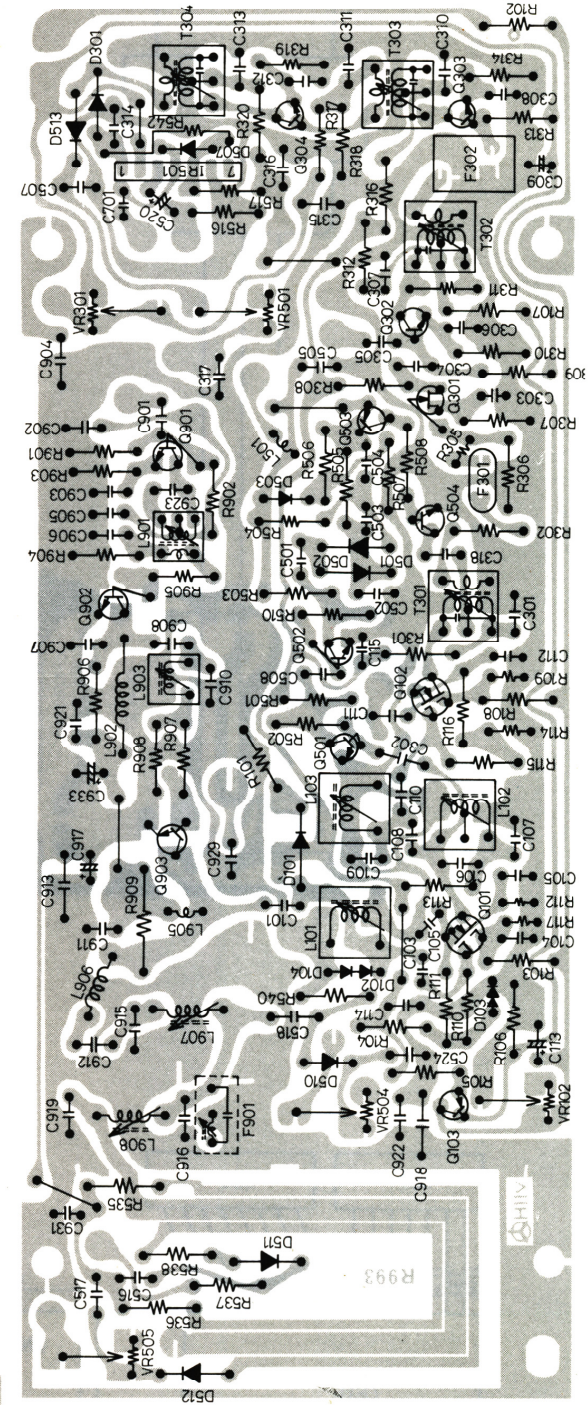
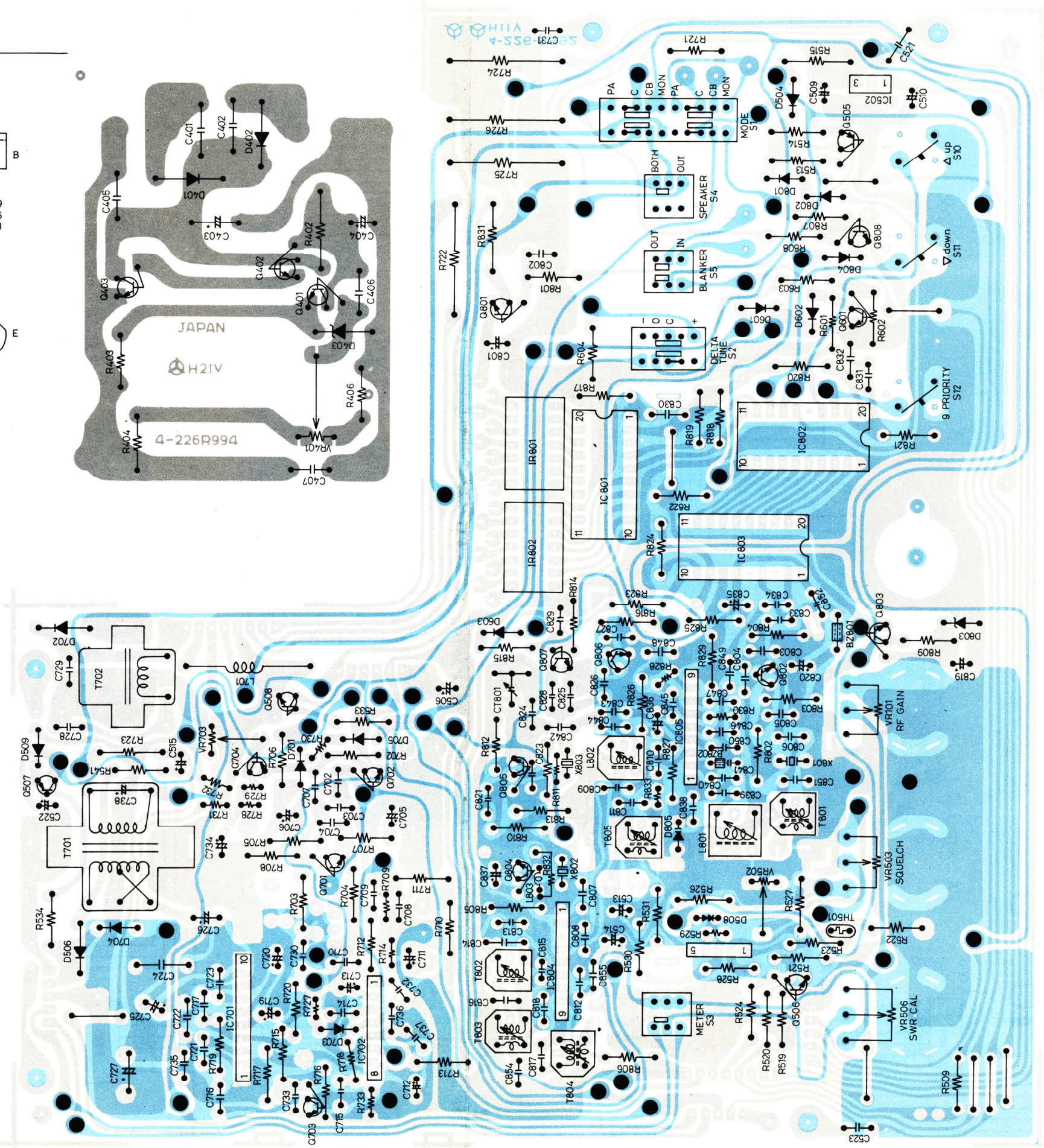
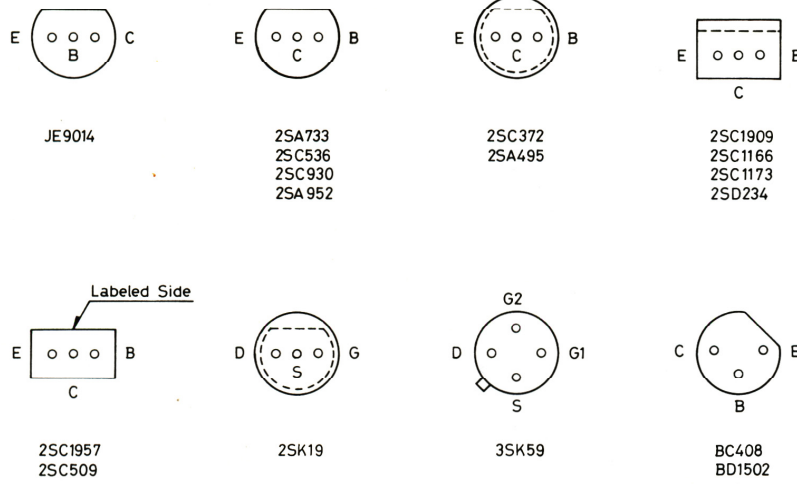


# PRINTED CIRCUIT BOARD (BOTTOM VIEW)

## TRANSISTOR LEAD IDENTIFICATIONS



NOTE: ● MARKS INDICATE PLATED-THROUGH HOLES/PINS. THUS SURFACE-A AND SURFACE-B ARE CONNECTED AT THOSE POINTS.