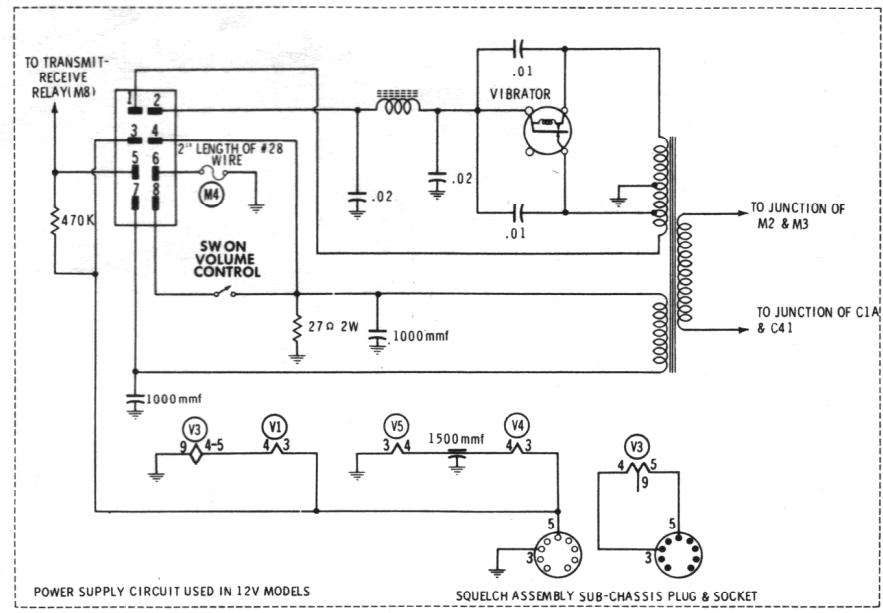


SEE PARTS LIST FOR ALTERNATE VALUE OR APPLICATION
DC COIL RESISTANCE VALUES UNDER ONE OHM NOT SHOWN ON SCHEMATIC DIAGRAM
ARROWS ON CONTROLS INDICATE CLOCKWISE ROTATION (CONTROL VIEWED FROM SHAFT END)

- DC voltage measurements taken with vacuum tube voltmeter; AC voltages measured with 1000 ohm per volt voltmeter.
- Socket connections are shown as bottom views.
- Measured values are from socket pin to common ground.
- Line voltage maintained at 117 volts for voltage readings.
- Nominal tolerance on component values makes possible a variation of +15% in voltage and resistance readings.
- Volume control at maximum, no signal applied for voltage measurements.

NUMBERS ASSIGNED TO COILS, SWITCHES, PLUGS, SOCKETS, AND TRANSFORMERS ARE TO FACILITATE CIRCUIT TRACING OR COMPONENT REPLACEMENT AND MAY NOT NECESSARILY BE FOUND ON THE UNIT.



RESISTANCE READINGS

ITEM	TUBE	Pin 1	Pin 2	Pin 3	Pin 4	Pin 5	Pin 6	Pin 7	Pin 8	Pin 9
V1	6CB6A	3.3 meg	47Ω	0Ω	.1Ω	+10K	+57K	0Ω		
V2	12A17	+100K	11.5 meg	0Ω	.1Ω	.1Ω	+60K	70K	47Ω	0Ω
V3	12AX7	+320K	10 meg	0Ω	0Ω	0Ω	+220K	10 meg	0Ω	.1Ω
V4	6AQ5A	470K	470Ω	.1Ω	0Ω	+1000Ω	+680Ω	470K		
V5	6AQ5A	.47K	.100Ω	0Ω	.1Ω	+1055Ω	+7100Ω	.47K		

ALL MEASUREMENTS MADE IN "RECEIVE" POSITION UNLESS OTHERWISE DESIGNATED.
 - MEASURED IN "TRANSMIT" POSITION. † MEASURED FROM OUTPUT OF M2.