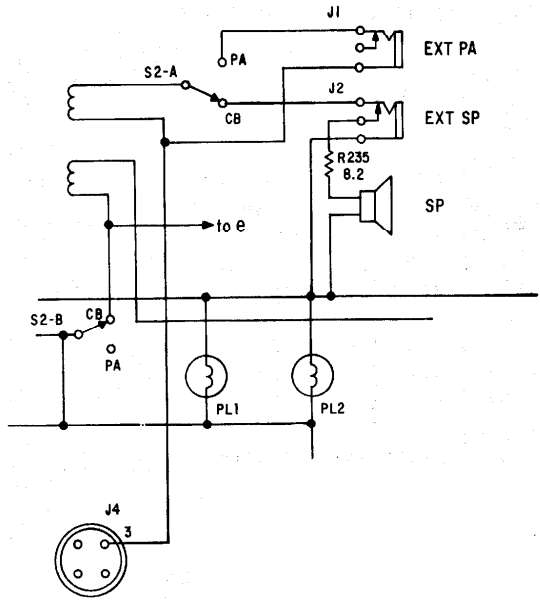


X311 37.600 MHZ X314 37.750 MHZ
 X312 37.650 MHZ X315 37.800 MHZ
 X313 37.700 MHZ X316 37.850 MHZ

X171 10.180MHZ X173 10.160 MHZ
 X172 10.170 MHZ X174 10.140 MHZ

X421 10.635 MHZ X423 10.615 MHZ
 X422 10.625 MHZ X424 10.595 MHZ

- NOTES:
1. ALL RESISTORS ARE IN OHMS AND 1/4 WATT UNLESS OTHERWISE SPECIFIED.
 2. CAPACITANCES FOLLOWED BY P ARE IN MICRO MICRO FARADS OR PICO FARADS UNLESS OTHERWISE SPECIFIED.
 3. * SUBJECT TO CHANGE IN INDIVIDUAL UNIT.
 4. ** 100 OHM RESISTOR REPLACES D472 IN MODEL 14T200.



DOTTED -----CIRCUITRY AND THE ABOVE AUDIO OUTPUT CIRCUIT ARE USED ONLY IN THE MODEL 14T200 VERSION.
 ALL VOLTAGES SHOWN ARE FOR REFERENCE ONLY AND MAY VARY IN DIFFERENT SETS.
 VOLTAGES UNDERSCORED IN TRANSMITTER PORTION ARE WITH MIKE BUTTON DEPRESSED TO TRANSMIT INTO 50 Ω LOAD.
 VOLTAGES MEASURED WITH AN RCA WV-98C VOLTOHMYST.