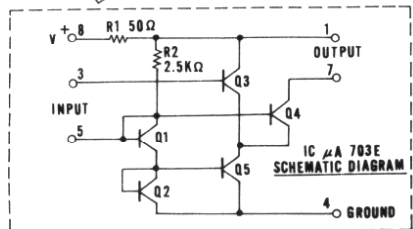


X-A : CRYSTAL UNIT A GROUP  
 X-B : CRYSTAL UNIT B GROUP  
 \* : ADJUSTABLE



- NOTES  
 1) ALL RESISTORS VALUE ARE INDICATED IN OHM (K.....10<sup>3</sup>OHM)  
 2) ALL CAPACITORS VALUE ARE INDICATED IN μF, (P.....10<sup>-6</sup> μF)

