

## GENERAL OPERATING INSTRUCTIONS

The explanations of operating controls and functions should be read and understood before actual operation of this transceiver.

1. Plug in the microphone and check to be sure that the antenna and power cables are properly connected.  
**CAUTION:** Do not transmit until an antenna or suitable dummy load has been connected to the coax antenna output jack.
2. Set the channel selector to the desired channel.
3. Initially, set the squelch control fully counterclockwise.
4. Set the PA-CB switch to the CB position.
5. Initially, set the Channel 9 function to the center off position.
6. Turn the set on and adjust the volume control to the desired level.
7. To transmit, press the push-to-talk bar on the microphone.

## SPECIFICATIONS

### GENERAL

Circuitry:	28 transistors, 34 diodes, 1 Integrated Circuit
Frequency Control:	$\pm 0.005\%$ crystal
Channels:	23 – all supplied
Controls:	On/off/volume; PA/CB/ variable squelch, ANL on/off; Ch. 9 automatic/manual/Channel 9 lock-in switch; channel selector knob
Jacks & Connections:	Provided for 8-ohm speaker, 52-ohm antenna, microphone
Power Source:	12–14 volts, DC
Speaker:	Bottom-mounted 3½”

Microphone: 2,000 ohm, dynamic, low impedance  
PA Audio Output: 2.5 watts  
Size: 7-7/8" x 2-1/8" x 8-7/8"  
Weight: 4-1/2 lbs.  
Accessories Included: Mike and cord, mobile mounting bracket, magnetic mike holder, fused DC auto cable, mounting hardware

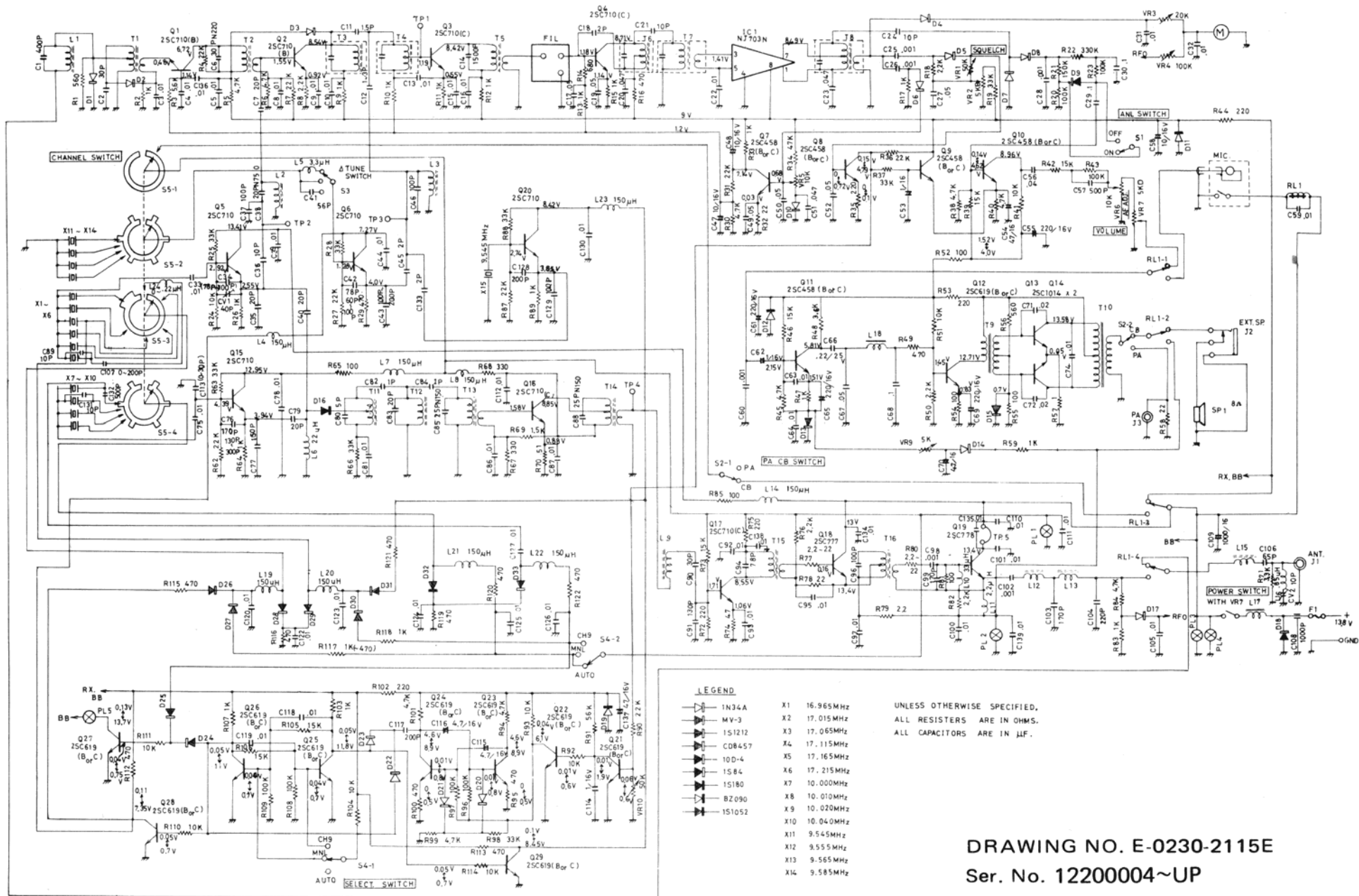
### **RECEIVER**

Receiving System: Dual conversion superheterodyne  
Sensitivity: 0.5 uv for 10 db (S + N)/N  
Selectivity:  $\pm 5$  KHz at 6 db  
Spurious Rejection: 50 db  
Audio Output Power: 2.5 watts  
Squelch Range: 1 to 500 uv  
Intermediate Frequency: 1st Conversion: 10.635 MHz  
2nd Conversion: 455 KHz

### **TRANSMITTER**

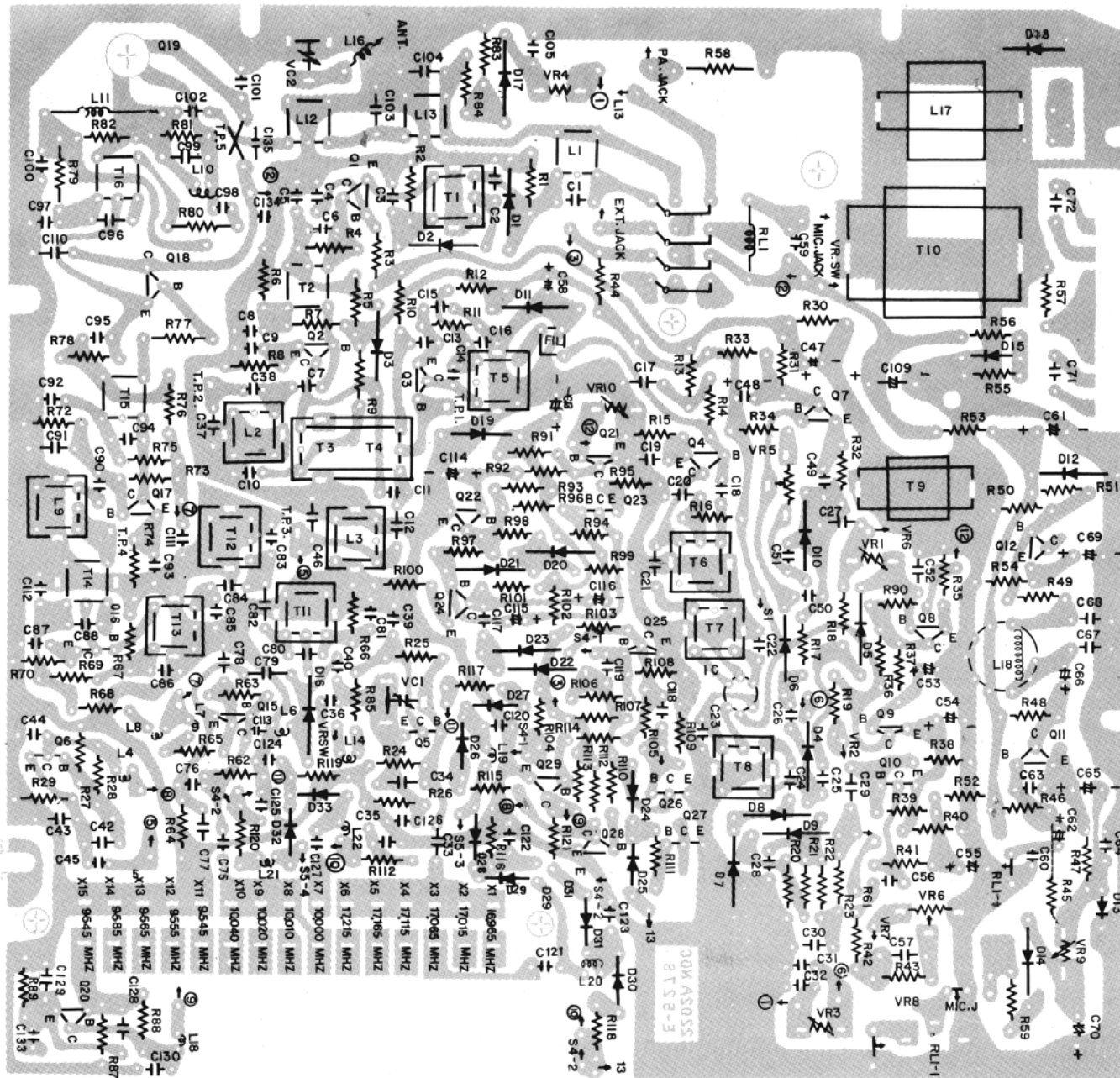
Modulation: High level Class B  
RF Input Power: 5 watts  
RF Output Power: 3.1 watts

# SCHEMATIC DIAGRAM



DRAWING NO. E-0230-2115E  
Ser. No. 12200004~UP

# PARTS LAYOUT



**CRYSTAL SYNTHESIZER LIST**

CH	Frequency	1st RX & TX OSC FREQ.			2nd TX OSC FREQ.		2nd RX OSC FREQ.	
1	26.965	26.965	-	16.965	=	10.000	=	9.545 + .455
2	26.975	26.975	-	16.965	=	10.010	=	9.555 + .455
3	26.985	26.985	-	16.965	=	10.020	=	9.565 + .455
4	27.005	27.005	-	16.965	=	10.040	=	9.585 + .455
5	27.015	27.015	-	17.015	=	10.000	=	9.545 + .455
6	17.025	27.025	-	17.015	=	10.010	=	9.555 + .455
7	27.035	27.035	-	17.015	=	10.020	=	9.565 + .455
8	27.055	27.055	-	17.015	=	10.040	=	9.585 + .455
9	27.065	27.065	-	17.065	=	10.000	=	9.545 + .455
10	27.075	27.075	-	17.065	=	10.010	=	9.555 + .455
11	27.085	27.085	-	17.065	=	10.020	=	9.565 + .455
12	27.105	27.105	-	17.065	=	10.040	=	9.585 + .455
13	27.115	27.115	-	17.115	=	10.000	=	9.545 + .455
14	27.125	27.125	-	17.115	=	10.010	=	9.555 + .455
15	27.135	27.135	-	17.115	=	10.020	=	9.565 + .455
16	27.155	27.155	-	17.115	=	10.040	=	9.585 + .455
17	27.165	27.165	-	17.165	=	10.000	=	9.545 + .455
18	27.175	27.175	-	17.165	=	10.010	=	9.555 + .455
19	27.185	27.185	-	17.165	=	10.020	=	9.565 + .455
20	27.205	27.205	-	17.165	=	10.040	=	9.585 + .455
21	27.215	27.215	-	17.215	=	10.000	=	9.545 + .455
22	27.225	27.225	-	17.215	=	10.010	=	9.555 + .455
Vacant	27.235	27.235	-	17.215	=	10.020	=	9.565 + .455
23	27.255	27.255	-	17.215	=	10.040	=	9.585 + .455

## **WARRANTY POLICY**

Midland Communications Company warrants each new Midland product to be free from defects in material and workmanship under normal use and service for a period of 90 days after delivery to the ultimate user and will replace or repair the product at our option, at no charge should it become defective and which our examination shall disclose to be defective and under warranty.

This warranty shall not apply to any Midland product which has been subject to misuse, neglect, accident, incorrect wiring not of our own installation, or to use in violation or instructions furnished by us, nor extended to units which have been repaired or altered outside of our factory.

This warranty does not cover carrying cases, earphones, batteries, antenna, broken or cracked cabinets, or any other accessory used in connection with this product.

This warranty is in lieu of all other warranties expressed or implied and no representative or person is authorized to assume for us any other liability in connection with the sale of our products.

Sales receipt must accompany product to validate the date of purchase.

### **Midland Communications Company**

1909 Vernon Street

North Kansas City, Missouri 64116

Copyright 1971 Midland Communications Company  
North Kansas City, Missouri 64116 U.S.A.  
Made Exclusively for Midland Communications Co. in Japan