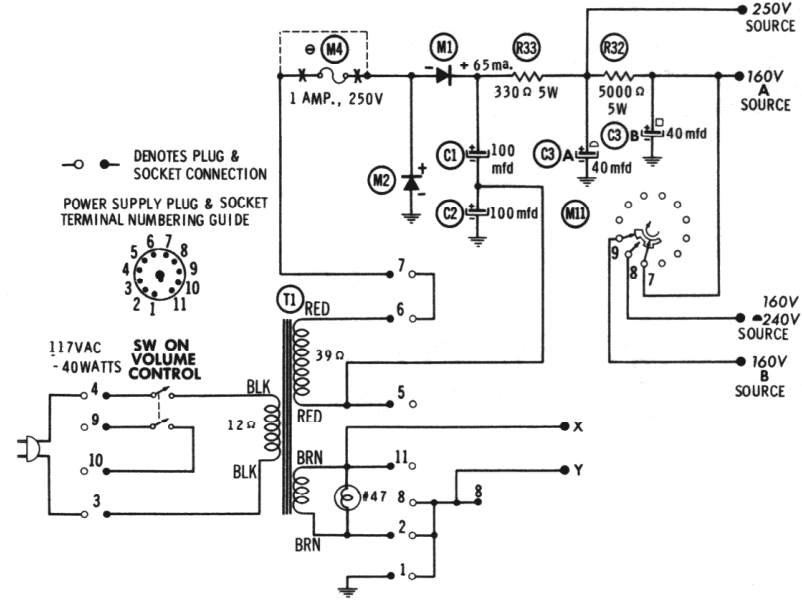
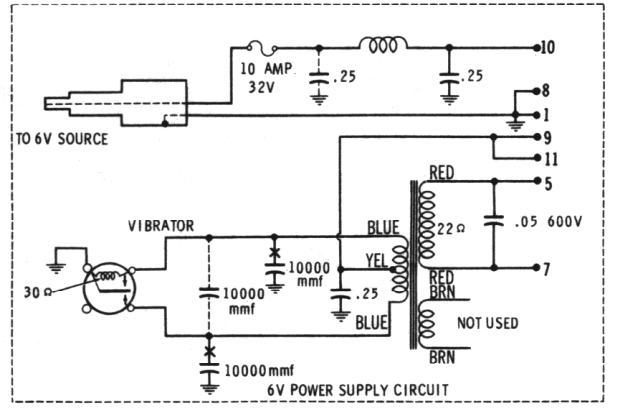
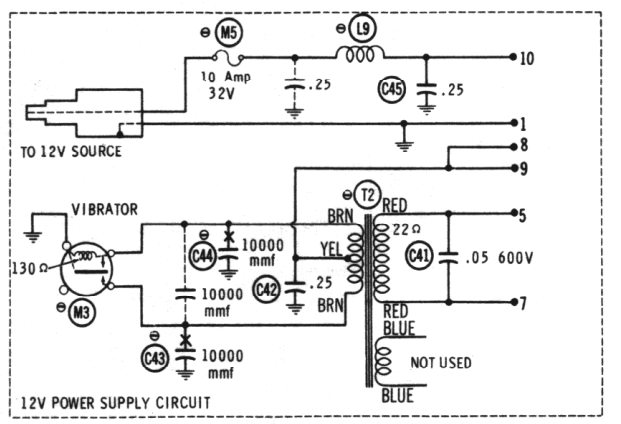
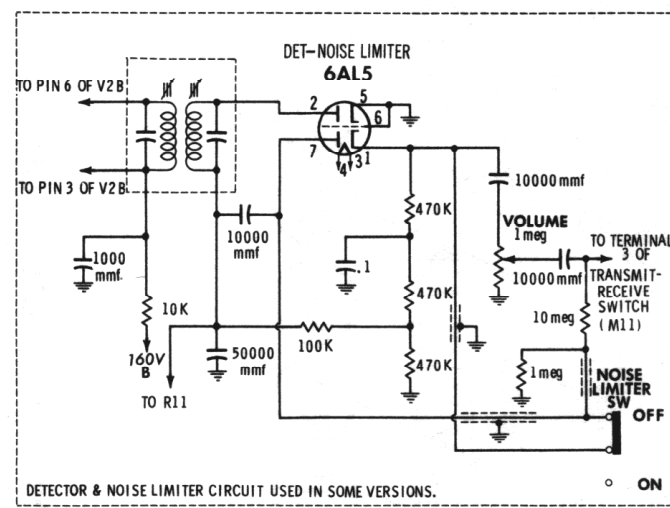


- DC voltage measurements taken with vacuum tube voltmeter; AC voltages measured with 1000 ohm per volt voltmeter.
- Socket connections are shown as bottom views.
- Measured values are from socket pin to common ground.
- Line voltage maintained at 117 volts for voltage readings.
- Nominal tolerance on component values makes possible a variation of ±1% in voltage and resistance readings.
- Volume control at maximum, no signal applied for voltage measurements.

RESISTANCE READINGS

ITEM	TUBE	Pin 1	Pin 2	Pin 3	Pin 4	Pin 5	Pin 6	Pin 7	Pin 8	Pin 9
V1	6EA8	†15K	.1Ω	†100K	0Ω	.1Ω	†10K	220Ω	0Ω	1meg
V2	6EA8	†15K	2meg	†15K	0Ω	.1Ω	†15K	100Ω	0Ω	22K
V3	EAA91	1.5meg	600K	.1Ω	0Ω	1.5meg	0Ω	600K	1meg	FIL
V4	ECC83/12AX7	†470K	4.7meg	0Ω	.1Ω	.1Ω	†22K	470K	3300Ω	0Ω
V5	6V6GT	0Ω	1Ω	†630Ω	†330Ω	470K	TP	0Ω	470Ω	FIL
V6	6AU8	.0Ω	47K	†10K	.1Ω	0Ω	.0Ω	22K	†22K	†1710Ω

ALL MEASUREMENTS MADE IN "RECEIVE" POSITION UNLESS OTHERWISE DESIGNATED.  
 † MEASURED IN "TRANSMIT" POSITION. ‡ MEASURED FROM OUTPUT OF M1.  
 ■ MEASURED WITH NOISE LIMITER IN "OFF" POSITION. TP TIE POINT



NUMBERS ASSIGNED TO COILS, SWITCHES, PLUGS, SOCKETS, AND TRANSFORMERS ARE TO FACILITATE CIRCUIT TRACING OR COMPONENT REPLACEMENT AND MAY NOT NECESSARILY BE FOUND ON THE UNIT.  
 ● SEE PARTS LIST FOR ALTERNATE VALUE OR APPLICATION  
 DC COIL RESISTANCE VALUES UNDER ONE OHM NOT SHOWN ON SCHEMATIC DIAGRAM  
 ARROWS ON CONTROLS INDICATE CLOCKWISE ROTATION (CONTROL VIEWED FROM SHAFT END)