

This Manual is provided by
CBTricks.com

Someone who wanted to help you repair your equipment
scanned this manual.

If you would like to help us put more manuals online support us.

Supporters of CBTricks.com paid for the hosting so you would have this file.

CBTricks.com is a non-commercial personal website was created to help promote the exchange of service, modification, technically oriented information, and historical information aimed at the Citizens Band, GMRS (CB "A" Band), MURS, Amateur Radios and RF Amps.

CBTricks.com is not sponsored by or connected to any Retailer, Radio, Antenna Manufacturer or Amp Manufacturer, or affiliated with any site links shown in the links database. The use of product or company names on my web site is not endorsement of that product or company.

If your company would like to provide technical information to be featured on this site I will put up on the site as long as I can do it in a non-commercial way.

The site is supported with donation from users, friends and selling of the Galaxy Service Manual CD to cover some of the costs of having this website on the Internet instead of relying on banner ads, pop-up ads, commercial links, etc. to pay my costs. Thus I do not accept advertising banners or pop-up/pop-under advertising or other marketing/sales links or gimmicks on my website.

ALL the money from donations is used for CBTricks.com I didn't do all the work to make money (I have a day job). I all didn't do all this work for someone else to make money also, for example the ebay CD sellers.

All Trademarks, Logos, and Brand Names are the property of their respective owners.
This information is not provided by, or affiliated in any way with any radio or antenna Manufacturers.
Thank you for any support you can give.



**Main P.C. Board
Component Outline,
Model 2701**

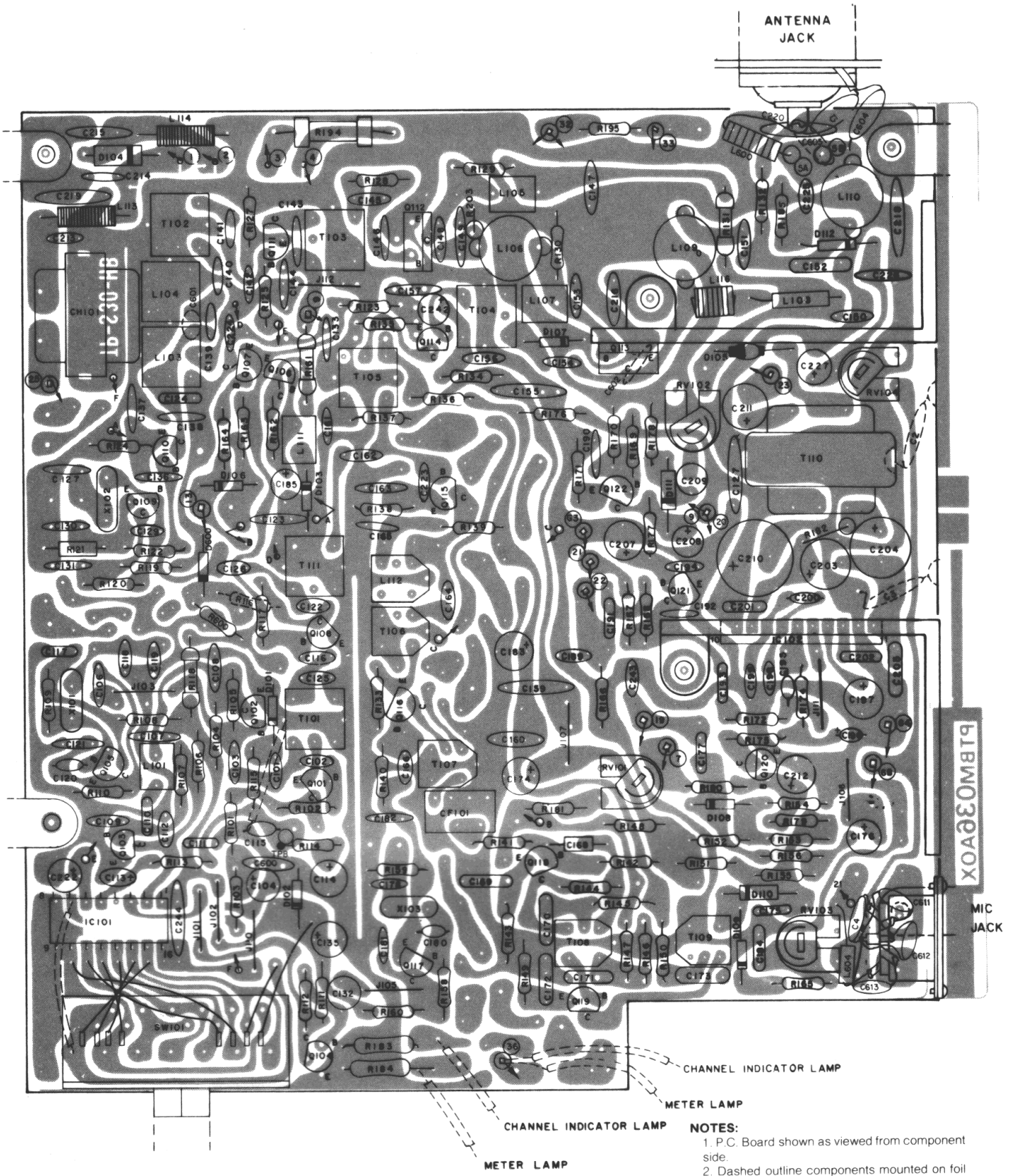


Figure 4-1. Component Outline, Model 2701

NOTES:

1. P.C. Board shown as viewed from component side.
2. Dashed outline components mounted on foil side.



**Chassis Mounted
Components, Model 2701**

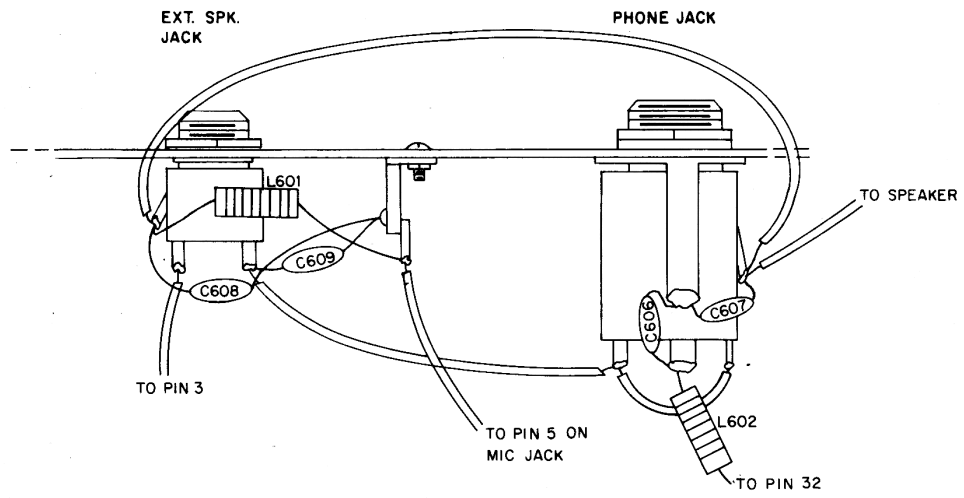


Figure 4-2. Chassis Mounted Components, Model 2701

Parts List

Main P.C. Board

Reference Designator	Description	Part No.
	main p.c.board, complete	APTBM036BT
	main p.c. board, plated and drilled	PTBM036AOX
C101	18pF, 50V, ceramic disc	CC-CB180KCM
C102	22pF, 50V, ceramic disc	CC-CB220KCM
C103	1pF, 50V, ceramic disc	CC-CB010CCM
C104	10uF, 16V, electrolytic	CE-ED100ALN
C105	(not used)	
C106	10pF, 50V, ceramic disc	CC-CB100DOM
C107	.01uF, 50V, ceramic disc	CK-CB103PEM
C108 and		
C109	330pF, 50V, ceramic disc	CC-CB331KOM
C110	.001uF, 50V, mylar	CQ-MB102KCH
C111	.01uF, 50V, mylar	CQ-MB103KCH
C112	39pF, 50V, ceramic disc	CC-CB390KOM
C113	.22uF, 50V, electrolytic	CE-EGR22ZMN
C114	10uF, 16V electrolytic	CE-ED100ZMN
C115	.1uF, 50V, electrolytic	CE-EGR10ZMN
C116	15pF, 50V, ceramic disc	CC-CB150KOM
C117	.01uF, 50V, mylar	CQ-MB103KCH
C118	39pF, 50V, ceramic disc	CC-CB390KOM
C119	12pF, 50V, ceramic disc	CB-CC120KPM
C120	560pF, 50V, ceramic disc	CK-CB561KBM
C121	100pF, 50V, ceramic disc	CC-CB101KPM
C122	15pF, 50V, ceramic disc	CC-CB150KOM
C123	.01uF, 50V, ceramic disc	CK-CB103PEM
C124	100pF, 500V, mica	CM-SD101KCS
C125	33pF, 50V, ceramic disc	CC-CB330KOM
C126	12pF, 50V, ceramic disc	CC-CB120KPM
C127	56pF, 50V, ceramic disc	CC-CB560KPM
C128	(not used)	
C129	.001uF, 50V, ceramic disc	CC-CB722849
C130	82pF, 50V, ceramic disc	CC-CB820KPM
C131	.01uF, 50V, ceramic disc	CK-CB103PEM
C132	560pF, 50V, mylar	CQ-MB561KCH
C133	.01uF, 50V, ceramic disc	CK-CB103PEM
C134	(not used)	
C135	10uF, 16V, electrolytic	CE-ED100ALN
C136	220pF, 50V, ceramic disc	CC-CB221KOM
C137	.01uF, 50V, ceramic disc	CK-CB103PEM
C138	.01uF, 50V, ceramic disc	CK-CB103PEM
C139	2pF, 50V, ceramic disc	CC-CB020COM
C140	2pF, 50V, ceramic disc	CC-CB020COM
C141	68pF, 50V, ceramic disc	CC-CB680KOM
C142	.01uF, 50V, ceramic disc	CK-CB103PEM
C143	100pF, 50V, ceramic disc	CC-CB101KPM
C144	.01uF, 50V, ceramic disc	CK-CB103PEM
C145	.01uF, 50V, ceramic disc	CK-CB103PEM
C146	470pF, 50V, ceramic disc	CK-CB471KBM
C147	.01uF, 50V, ceramic disc	CK-CB103PEM
C148	120pF, 50V, ceramic disc	CC-CB121KPM
C149	220pF, 50V, ceramic disc	CC-CB221KOM
C150	.01uF, 50V, mica	CK-CB103PEM
C151	100pF, 500V, mica	CM-SD101KCS
C152	270pF, 500V, ceramic disc	CM-SD271KCS
C153	82pF, 50V, ceramic disc	CC-CB820KOM
C154	27pF, 50V, ceramic disc	CC-CB270KOM
C155	.047uF, 50V, ceramic disc	CK-CB473ZFM
C156 and		
C157	.01uF, 50V, ceramic disc	CK-CB103PEM
C158	(not used)	
C159	.047uF, 50V, ceramic disc	CK-CB473ZFM

Reference Designator	Description	Part No.
C160	.047uF, 50V, mylar	CQ-MB473KCH
C161	.01uF, 50V, ceramic disc	CK-CB103PEM
C162	120pF, 50V, ceramic disc	722413
C163	.01uF, 50V, ceramic disc	CK-CB103PEM
C164	2pF, 50V, ceramic disc	CC-CB020COM
C165	.01uF, 50V, ceramic disc	CK-CB103PEM
C166	47pF, 50V, ceramic disc	CK-CB470PEM
C167	(not used)	
C168	2.2pF, 500V, ceramic disc	CG-2H2R2KNN
C169 thru		
C173	.047uF, 50V, mylar	CQ-MB473KCH
C174	3.3uF, 25V, electrolytic	CE-EE3R3ALN
C175	4700pF, 50V, mylar	CQ-MB472KCH
C176	1uF, 50V, electrolytic	CE-EG910ALN
C177	2200pF, 50V, mylar	CQ-MB223KCH
C178	39pF, 50V, ceramic disc	CC-CB390KOM
C179	(not used)	
C180 and		
C181	560pF, 50V, ceramic disc	CK-CB561KBM
C182	68pF, 50V, ceramic disc	CC-CB680KPM
C183	10uF, 16V, electrolytic	CE-ED100ALN
C184	.022uF, 50V, mylar	CQ-MB223KCH
C185	47uF, 10V, electrolytic	CE-EBA70ALN
C186	(not used)	
C187	(not used)	
C188	(not used)	
C189	.0022uF, 50V, ceramic disc	CK-CB222KBM
C190	.01uF, 50V, ceramic disc	CK-CB103PEM
C191	.022uF, 50V, mylar	CQ-MB223KCH
C192	150pF, 50V, ceramic disc	CC-CB151KOM
C193	.01uF, 50V, mylar	CQ-MB103KCS
C194	.01uF, 50V, ceramic disc	CK-CB103PEM
C195	390pF, 50V, ceramic disc	CK-CB391KBM
C196	5.6uF, 25V, tantalum	CS-SE5R6MDN
C197	33uF, 6.3V, electrolytic	CE-EB330ALN
C198 and		
C199	68pF, 50V, ceramic disc	CC-CB680KOM
C200	390pF, 50V, ceramic disc	CK-CB391KBM
C201	.068 uF, 50V, mylar	CQ-NB683KCH
C202	.022uF, 50V, mylar	CQ-MB223KCH
C203	47uF, 16V, electrolytic	CE-ED470ALN
C204	220uF, 16F, electrolytic	CE-AD221ZLS
C205	.068uF, 50V, mylar	CQ-MB683KCH
C206	(not used)	
C207	33uF, 6.3V, electrolytic	CE-EB330ALN
C208	10uF, 16V, electrolytic	CE-ED100ALN
C209	1uF, 50V, electrolytic	CE-EG010ALN
C210	1000uF, 16V, electrolytic	CE-ED102ZUN
C211	47uF, 25V, electrolytic	CE-AE470ZLS
C212	33uF, 6.3V, electrolytic	CE-EB330ALN
C213 thru		
C216	.01uF, 50V, ceramic disc	CK-CB103PEM
C217 thru		
C220	.047uF, 50V, ceramic disc	CK-CB473ZFM
C221	(not used)	
C222	4.7uF, 25V, electrolytic	CE-EE4R7ZMN
C223	39pF, 50V, ceramic disc	CC-CB390KOM
C224	.01uF, 50V, ceramic disc	CK-CB103PEM
C225	3pF, 50V, ceramic disc	CC-DB030CPM
C226	.0047uF, 50V, ceramic disc	CK-CB472PEM
C227	1uF, 50V, electrolytic	CE-EG010ALN
C228 thru		
C241	(not used)	
C242	1uF, 50V, electrolytic	CE-EG010ALN
C243	100pF, 50V, ceramic disc	CC-CB101KOM

Reference Designator	Description	Part No.
C244	.047uF, 50V, ceramic disc	CK-CB473ZFM
C245	27pF, 50V, ceramic disc	CC-CB270KOM
C600	.001uF, 50V, ceramic disc	722849
C601	1pF, 50V, ceramic disc	722447
C602	82pF, 50V, ceramic disc	722410
C603	(not used)	
CJ101	ceramic filter	FB-R455A08M
CH101	choke coil	LF-119H001Y
D101	1TT401, silicon	QD-CTT410KQ
D102	MZ205, silicon, zener	QD-ZMZ205XE
D103	RD9.1E, silicon, zener	QD-ZRD9EXAA
D104	1S1885, silicon	QD-SS1885XT
D105	V06C, silicon	QD-SV06CXXB
D106	1S1555, silicon	QD-SS1555XT
D107	1S1555, silicon	QD-SS1555XT
D108	1S1555, silicon	QD-SS1555XT
D109	1N60, germanium	QD-G1N60XXT
D110	1N60, germanium	QD-G1N60XXT
D111	1N60, germanium	QD-G1N60XXT
D112	1N60, germanium	QD-G1N60XXT
D113 thru		
D116	(not used)	
D600	1N4148	760037
IC101	PLL02A	QQ-OPPL02A0
IC102	(TOYO)BA521	QQ-MBA521AX
L101	rf coil	LF-220KD01N
L102	(not used)	
L103	rf coil	TR-10CD004S
L104	rf coil	TR-10CD005S
L105	rf coil	LF-2R2KD01N
L106	rf coil	TR-A5CZ001M
L107	rf coil	LF-680KD01N
L108	rf coil	LD-ADX3825M
L109	rf coil	TR-A5CZ002M
L110	rf coil	TR-A5CZ003M
L111	rf coil	LF-680KD01N
L112	rf coil	TR-07MB008N
L113	rf coil	LD-ADB4024B
L114	rf coil	LD-ADB4024B
L115	(not used)	
L115	(not used)	
L116	rf coil	LA-1KE1011A
Q101	(MITSUBISHI) MPS3704	760142
Q102	(MITSUBISHI) 2SC710 (D)	QT-C0710XBE
Q103	(NEC) 2SC829 (B)	QT-C0829XAN
Q104	(MITSUBISHI) 2SC710 (D)	QT-C0710XBE
Q105	(MITSUBISHI) 2SC710 (D)	QT-C0710XBE
Q106	(MITSUBISHI) 2SC1318 (Q)	QT-C1318XON
Q107	(MITSUBISHI) 2SA719 (Q)	QT-A0719XCN
Q108	(NEC) 2SC1359 (B)	QT-C1359XAN
Q109	(MITSUBISHI) 2SC710 (D)	QT-C0710XBE
Q110	(MITSUBISHI) 2SC710 (D)	QT-C0710XBE
Q111	2SC1687	QT-C1687XAN
Q112	(SONY) 2SC1760-3	QT-C1760XAS
Q113	(NEC) 2SC1306	QT-C1306XZA
Q114	2SC1047 (B)	QT-C1047XAN
Q115	(NEC) 2SC1359 (B)	QT-C1359XAN

Reference Designator	Description	Part No.
Q116	(NEC) 2SC829 (C)	QT-C0829XBN
Q117	(MITSUBISHI) 2SC710 (D)	QT-C0710XBE
Q118	(NEC) 2SC829 (C)	QT-C0829XBN
Q119	(NEC) 2SC829 (C)	QT-C0829XBN
Q121	2SC828PQ	QT-C0828XDN
Q122	2SC8280	QT-C0828XAN
Q123 thru		
Q126	(not used)	
R101	330, 5%, 1/4w. carbon film	RD-25RJ331D
R102	100k, 5%, 1/4w. carbon film	722552
R103	1.5k, 5%, 1/4w. carbon film	RD-25RJ152D
R104	1.5k, 5%, 1/4w. carbon film	RD-25RJ152D
R105	220, 5%, 1/4w. carbon film	RD-25RJ221D
R106	1.5k, 5%, 1/4w. carbon film	RD-25RJ152D
R107	100k, 5%, 1/4w. carbon film	RD-25RJ104D
R108	1.5k, 5%, 1/4w. carbon film	RD-25RJ152D
R109	100k, 5%, 1/4w. carbon film	RD-25RJ104D
R110	2.2k, 5%, 1/4w. carbon film	RD-25RJ222D
R111	1k, 5%, 1/4w. carbon film	RD-25RJ102D
R112	100k, 5%, 1/4w. carbon film	RD-25RJ104D
R113	3.3k, 5%, 1/4w. carbon film	RD-25RJ332D
R114	470, 5%, 1/4w. carbon film	RD-25RJ471D
R115	22k, 5%, 1/4w. carbon film	RD-25RJ223D
R116	470, 5%, 1/4w. carbon film	RD-25RJ471D
R117	33k, 5%, 1/4w. carbon film	RD-25RJ333D
R118	100, 5%, 1/4w. metal oxide	RG-HAPJ101B
R119	3.3k, 5%, 1/4w. carbon film	722576
R120	100k, 5%, 1/4w. carbon film	RD-25RJ104D
R121	2.2k, 5%, 1/4w. carbon film	722572
R122	1k, 5%, 1/4w. carbon film	RD-25RJ102D
R123	82k, 5%, 1/4w. carbon film	RD-25RJ823D
R124	270, 5%, 1/4w. carbon film	RD-25RJ271D
R125	10k, 5%, 1/4w. carbon film	RD-25RJ103D
R126	(not used)	
R127	68, 5%, 1/4w. carbon film	RD-25RJ680D
R128	100, 5%, 1/4w. carbon film	RD-25RJ101D
R129	220, 5%, 1/4w. carbon film	RD-25RJ221D
R130	47, 5%, 1/4w. carbon film	RD-25RJ470D
R131	10, 5%, 1/4w. metal oxide	RX-HAPJ100B
R132	47k, 5%, 1/4w. carbon film	RD-25RJ473D
R133	270, 5%, 1/4w. carbon film	RD-25RJ271D
R134	680, 5%, 1/4w. carbon film	RD-25RJ681D
R135	1.5k, 5%, 1/4w. carbon film	RD-25RJ152D
R136	100, 5%, 1/4w. carbon film	RD-25RJ101D
R137	1.8k, 5%, 1/4w. carbon film	RD-25RJ182D
R138	1k, 5%, 1/4w. carbon film	RD-25RJ102D
R139	470, 5%, 1/4w. carbon film	RD-25RJ471D
R140	470k, 5%, 1/4w. carbon film	RD-25RJ474D
R141	1k, 5%, 1/4w. carbon film	RD-25RJ102D
R142	4.7k, 5%, 1/4w. carbon film	RD-25RJ472D
R143	470, 5%, 1/4w. carbon film	RD-25RJ471D
R144	47k, 5%, 1/4w. carbon film	RD-25RJ473D
R145	220, 5%, 1/4w. carbon film	RD-25RJ221D
R146	330, 5%, 1/4w. carbon film	RD-25RJ331D
R147	1.5k, 5%, 1/4w. carbon film	RD-25RJ152D
R148	27k, 5%, 1/4w. carbon film	RD-25RJ273D
R149	220, 5%, 1/4w. carbon film	RD-25RJ221D
R150	47, 5%, 1/4w. carbon film	RD-25RJ470D
R151	22k, 5%, 1/4w. carbon film	RD-25RJ223D
R152	270k, 5%, 1/4w. carbon film	RD-25RJ273D
R153	47k, 5%, 1/4w. carbon film	RD-25RJ473D
R154	68k, 5%, 1/4w. carbon film	RD-25RJ683D
R155	33k, 5%, 1/4w. carbon film	RD-25RJ333D
R156	447k, 5%, 1/4w. carbon film	RD-25RJ473D

Reference Designator	Description	Part No.
R157	(not used)	
R158	100 k, 5%, 1/4w, carbon film	RD-25RJ104D
R159	1.5k, 5%, 1/4w, carbon film	RD-25RJ152D
R160	1.5k, 5%, 1/4w, carbon film	RD-25RJ152D
R161	22, 5%, 1/2w, metal oxide	RG-HAPJ220B
R162	1k, 5%, 1/4w, carbon film	RD-25RJ102D
R163	390, 5%, 1/4w, carbon film	RD-25RJ391D
R164	10k, 5%, 1/4w, carbon film	RD-25RJ103D
R165	820, 5%, 1/4w, carbon film	RD-25RJ821D
R166	3.3k, 5%, 1/4w, carbon film	RD-25RJ332D
R167	27k, 5%, 1/4w, carbon film	RD-25RJ273D
R168	3.3k, 5%, 1/4w, carbon film	RD-25RJ332D
R169	220k, 5%, 1/4w, carbon film	RD-25RJ224D
R170	22k, 5%, 1/4w, carbon film	RD-25RJ223D
R171	150, 5%, 1/4w, carbon film	RD-25RJ151D
R172	2.2k, 5%, 1/4w, carbon film	RD-25RJ222D
R173	(not used)	
R174	10, 5%, 1/4w, carbon film	RD-25RJ100D
R175	10k, 5%, 1/4w, carbon film	RD-25RJ103D
R176	82, 5%, 1/4w, carbon film	RD-25RJ820D
R177	270, 5%, 1/4w, carbon film	RD-25RJ271D
R178	680, 5%, 1/4w, carbon film	RD-25RJ681D
R179	22k, 5%, 1/4w, carbon film	RD-25RJ223D
R180	1.8k, 5%, 1/4w, carbon film	RD-25RJ182D
R181	18k, 5%, 1/4w, carbon film	RD-25RJ183D
R182	100, 5%, 1/4w, carbon film	RD-14VJ101D
R183	270, 5%, 1/2w, metal oxide	RG-HAPJ271B
R184	270, 5%, 1/2w, metal oxide	RG-HAPJ271B
R185	1k, 5%, 1/4w, carbon film	RD-25RJ102D
R186 thru		
R193	(not used)	
R194	15, 5%, 2w, metal oxide	RX-1ANJ150N
R195	1.5k, 5%, 1/4w, carbon film	RD-25RJ152D
R196 thru		
R202	(not used)	
R203	560, 5%, 1/4w, carbon film	RD-25RJ561D
RV101	10k, potentiometer	RP-GNB10301
RV102	2k, potentiometer	RP-GNB20201
RV103	20k, potentiometer	RP-GNB20301
RV104	20k, potentiometer	RP-GNB20301
SW101	switch, rotary wafer	700047
T101	rf transformer	TR-10DA002T
T102	rf transformer	TR-10CB001S
T103	rf transformer	TR-10CP005S
T104	rf transformer	TR-10MP003T
T105	rf transformer	TR-10CA005S
T106	rf transformer	TR-07MB008N
T107	i-f transformer	TR-07LA004N
T108	i-f transformer	TR-97LA005N
T109	i-f transformer	TR-07LA023N
T110	af transformer	TB-G25B001W
T111	i-f transformer	TR-10MB003T
X101	11 8066 MHz, crystal	XA-S1B4001N
X102	10.695 MHz, crystal	XA-S1B3002N
X103	10.240 MHz, crystal	XA-S1B3001N

Chassis Mounted Components

Reference Designator	Description	Part No.
C1	330pF, 50V, mica	721631
C2 thru C4	.01 uF, 50V, ceramic disc	CK-DB103PEM
C604 and C605	330pF, 50V, mica	721681
C606 thru C609	.001 uF, 50V, ceramic disc	722849
C610	(not used)	
C611 thru C613	.001 uF, 50V, ceramic disc	722849
L600	rf coil, .18uH	722871
L601	rf coil, 6.8uH	722857
L602	rf coil, 6.8uH	722857
L603	(not used)	
L604	rf coil, 6.8uH	722857
J1	jack, antenna	YJ-C0225009Z
J2	jack, 5-pin, DIN microphone	YJ-D055001Z
J3	jack, 3-pin external speaker	YJ-T035003Z
J4	jack, remote speaker	YJ-S045002Z
M	meter	ZM-J2017M03
PL1	lamp, pilot	ZP-A064102U
PL2	lamp, pilot	ZP-A06410ZU
S1	switch, on/off (part of volume control)	RV-NB503A01
VR1	50k, potentiometer (part of volume control)	RV-NB503A01
VR2	10k, potentiometer (squelch control)	RV-NA103B03

Mechanical Parts

Reference Designator	Description	Qty.
VE-66JSB004	1 panel, front plastic	1
MU-677SZ019	chassis, main frame	1
MB-782SZ016	frame, front	1
MU-773SM022	case, upper	1
MU-773SM023	case, lower	1
450317	indicator, channel selector	1
MZ-121SZ003	bracket, meter	1
VM-165RX001	holder, lamp	2
VN-176SB003	knob, channel selector	1
VN-176SM001	knob, volume and squelch	2
ML-121SZ007	bracket, speaker mounting	3
YH-F13001U	holder, fuse	1
AC-DC027GEA	cord, power	1
VM-270NB001	bushing, power cord	1

Accessory Parts

Reference Designator	Description	Qty.
MU-276SW001	bracket, mobile mounting	1
MF-284SN001	handscrew	2
MZ-331SZ002	holder, microphone	1
BT-PT5013BN	screw, self-tapping M5 x 13	4
BW-G50A06SW	washer, outside toothed M5	4
BT-PP4010BZ	screw, self-tapping M4 x 10	2
BW-U40855SW	washer, inside toothed	2
ZG-AAZ70101	microphone	1

**Schematic Diagram
Model 2701**

HY-GAIN DE PUERTO RICO, INC.

P.O. Box 68 State Hwy 31, Km. 4.0
Naguabo, Puerto Rico 00718