

This Manual is provided by
CBTricks.com

Someone who wanted to help you repair your equipment
scanned this manual.

If you would like to help us put more manuals online support us.

Supporters of CBTricks.com paid for the hosting so you would have this file.

CBTricks.com is a non-commercial personal website was created to help promote the exchange of service, modification, technically oriented information, and historical information aimed at the Citizens Band, GMRS (CB "A" Band), MURS, Amateur Radios and RF Amps.

CBTricks.com is not sponsored by or connected to any Retailer, Radio, Antenna Manufacturer or Amp Manufacturer, or affiliated with any site links shown in the links database. The use of product or company names on my web site is not endorsement of that product or company.

If your company would like to provide technical information to be featured on this site I will put up on the site as long as I can do it in a non-commercial way.

The site is supported with donation from users, friends and selling of the Galaxy Service Manual CD to cover some of the costs of having this website on the Internet instead of relying on banner ads, pop-up ads, commercial links, etc. to pay my costs. Thus I do not accept advertising banners or pop-up/pop-under advertising or other marketing/sales links or gimmicks on my website.

ALL the money from donations is used for CBTricks.com I didn't do all the work to make money (I have a day job). I all didn't do all this work for someone else to make money also, for example the ebay CD sellers.

All Trademarks, Logos, and Brand Names are the property of their respective owners.
This information is not provided by, or affiliated in any way with any radio or antenna Manufacturers.
Thank you for any support you can give.

MAIN P.C. BOARD

WIRING CHART

PIN NO.	WIRING CONNECTIONS
1	red wire to fuse holder
2	black wire (power cord)
3	blue wire to ext spk jack
4	orange wire to pin 27 on channel selector board
5	not used
6	not used
7	gray wire to pin 26 on channel selector board
8	not used
9	red wire to pin 20 on main p.c. board
10	not used
11	not used
12	not used
13	blue wire to pin 29 on channel selector board
14	not used
15	not used
16	not used
17	not used
18	not used
18	not used
19	green wire to pin 25 on channel selector board
20	orange wire to pin 9 on main p.c. board
	yellow wire to pin 39 on channel selector board
21	white wire to pin 31 on channel selector board
22	gray wire to pin 30 on channel selector board
23	yellow wire to L601
24	not used
25	red wire to pin 7 on channel selector board
26	not used
27	not used
28	not used
G1	not used
G2	not used
G3	not used
G4	black wire to pin 1 on channel selector board

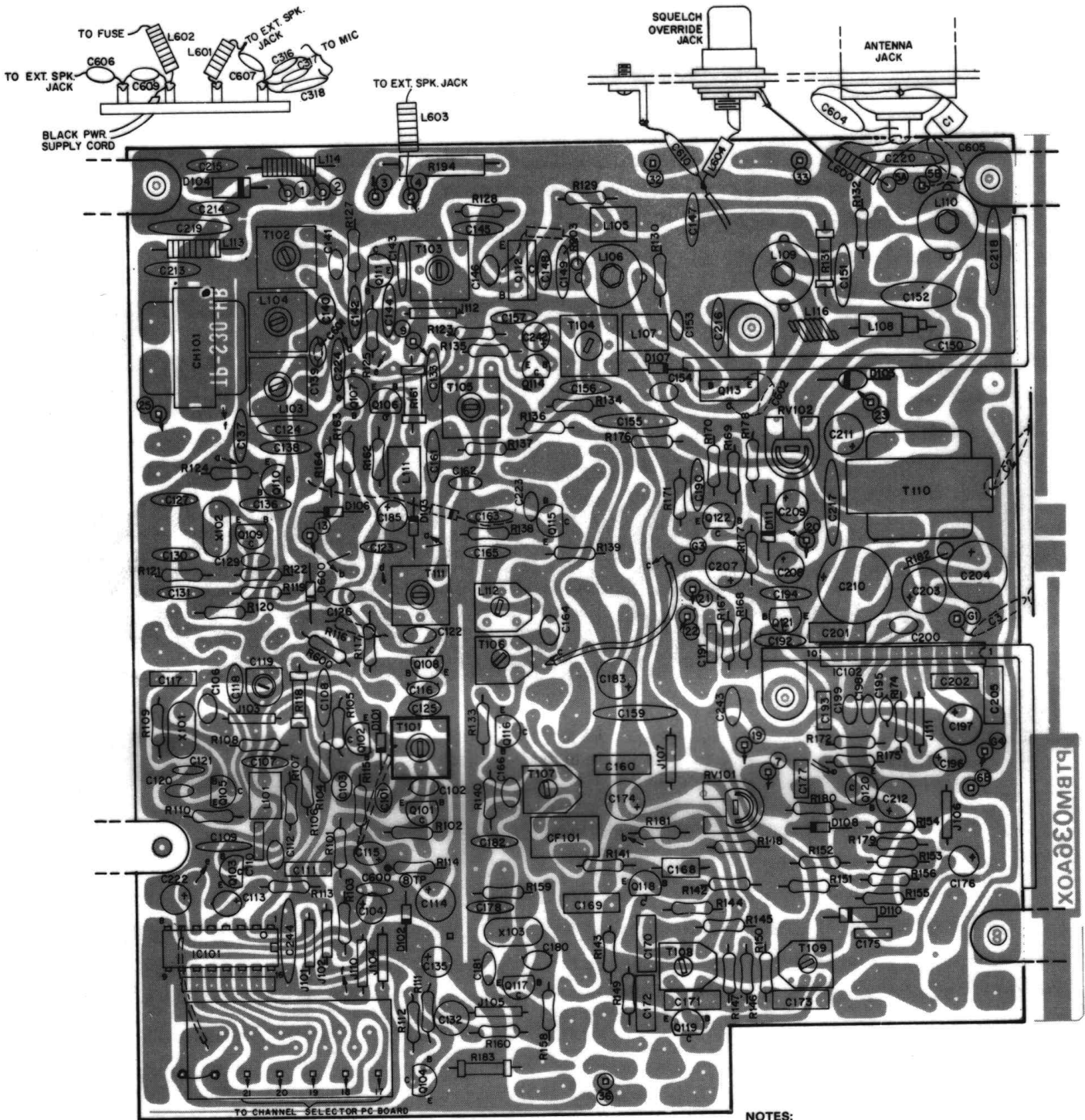


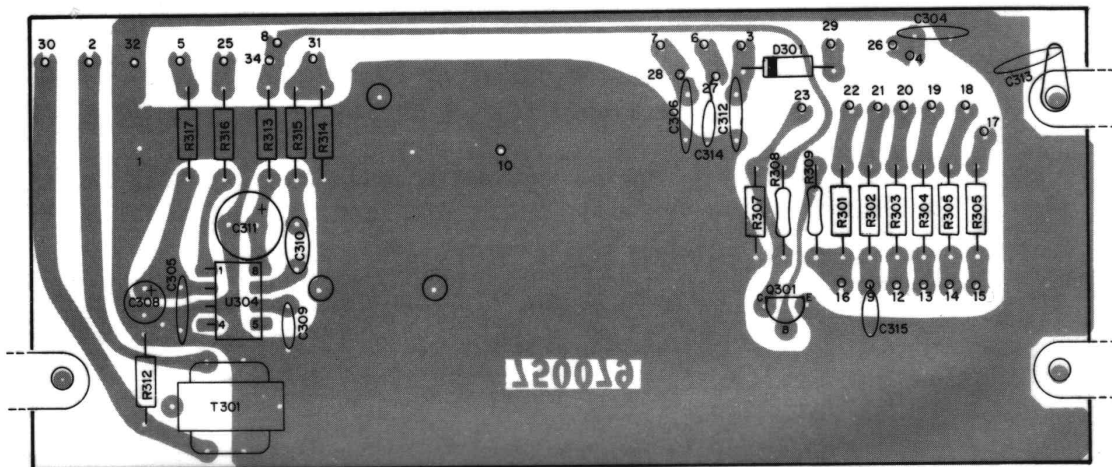
Figure 4-1. Component Outline, Main P.C. Board, Model 2710



**Component Outline
Channel Selector P.C. Board**

WIRING CHART
CHANNEL SELECTOR BOARD

PIN NO.	WIRING CONNECTIONS
1	black wire to pin G4 on main p.c. board
2	white shield wire to mic
3	white/green wire to mic
4	orange wire to mic
5	blue wire to mic
6	green wire to mic
7	red wire to pin 25 on main p.c. board
8	black heavy wire to mic
9	purple wire to mic
10	gray heavy wire to mic
11	not used
12	black/white wire to mic
13	brown/white wire to mic
14	red/white wire to mic
15	orange/white wire to mic
16	brown/wire to mic
17	blue wire to main p.c. board
18	orange wire to main p.c. board
19	red wire to main p.c. board
20	yellow wire to main p.c. board
21	white wire to main p.c. board
22	green wire to main p.c. board
23	white wire to main p.c. board
24	not used
25	green wire to pin 19 on main p.c. board
26	gray wire to pin 7 on main p.c. board
27	orange wire to pin 4 on main p.c. board
28	red heavy wire to mic
29	blue wire to pin 13 on main p.c. board
30	gray wire to pin 22 on main p.c. board
31	white wire to pin 21 on main p.c. board
32	shield wire to mic
33	not used
34	yellow wire to pin 20 on main p.c. board



NOTES:

1. P.C. board shown as viewed from component side.
2. Dashed outline components—mounted on foil side.

Figure 4-2. Component Outline Channel Selector P.C. Board, Model 2710

Parts List

Main P.C. Board

Reference Designator	Description	Part No.
	main p.c. board, complete	AP-TBM036JT
	main p.c. board, plated and drilled	PT-BN036AOX
C101	18pF, 50V, ceramic disc	CC-CB180KCM
C102	22pF, 50V, ceramic disc	CC-CB220KOM
C103	1pF, 50V, ceramic disc	CC-CB010CCM
C104	10uF, 16V, electrolytic	CE-ED100ALN
C105	(not used)	
C106	10pF, 50V, ceramic disc	CC-CB100DOM
C107	01uF, 50V, ceramic disc	CK-CB103PEM
C108	330pF, 50V, ceramic disc	CC-CB331KOM
C109	330pF, 50V, ceramic disc	CC-CB331KOM
C110	.001uF, 50V, mylar	CQ-MB102KCH
C111	.01uF, 50V, mylar	CQ-MB103KCH
C112	39pF, 50V, ceramic disc	CC-CB390KOM
C113	.22uF, 50V, electrolytic	CE-ECR22ZMN
C114	10uF, 16V, electrolytic	CE-ED100ZMN
C115	.1uF, 50V, electrolytic	CE-EGR10SMN
C116	15pF, 50V, ceramic disc	CC-CB150KOM
C117	.01uF, 50V, mylar	CQ-MB103KCH
C118	39pF, 50V, ceramic disc	CC-CB390KOM
C119	12pF, 50V, ceramic disc	CC-CB120KPM
C120	560pF, 50V, ceramic disc	CK-CB561KBM
C121	100pF, 50V, ceramic disc	CC-CB101KPM
C122	22pF, 50V, ceramic disc	CC-CB220KOM
C123	.01uF, 50V, ceramic disc	CK-CB103PEM
C124	100pF, 500V, mica	CM-SD101KCS
C125	33pF, 50V, ceramic disc	CC-CB330KOM
C126	12pF, 50V, ceramic disc	CC-CB120KPM
C127	56pF, 50V, ceramic disc	CC-CXB560KPM
C128	(not used)	
C129	.001uF, 50V, ceramic disc	722849
C130	82pF, 50V, ceramic disc	CC-CB820KPM
C131	.01uF, 50V, ceramic disc	CK-CB103PRM
C132	560pF, 50V, mylar	CQ-MB561LCH
C133	.01uF, 50V, ceramic disc	CK-CB103PEM
C134	(not used)	
C135	10uF, 16V, electrolytic	CE-ED100ALN
C136	220pF, 50V, ceramic disc	CC-CB221KOM
C137	.01uF, 50V, ceramic disc	CK-CB103PEM
C138	.01uF, 50V, ceramic disc	CK-CB103PEM
C139	2pF, 50V, ceramic disc	CC-CB020COM
C140	2pF, 50V, ceramic disc	CC-CB020COM
C141	68pF, 50V, ceramic disc	CC-CB680KOM
C142	.01uF, 50V, ceramic disc	CK-CB103PEM
C143	100pF, 50V, ceramic disc	CC-CB101KPM
C144	.01uF, 50V, ceramic disc	CK-CB103PEM
C145	.01uF, 50V, ceramic disc	CK-CB103PEM
C146	470pF, 50V, ceramic disc	CK-CB471KBM
C147	.01uF, 50V, ceramic disc	CK-CB103PEM
C148	120pF, 50V, ceramic disc	CC-CB121KOM
C149	220pF, 50V, ceramic disc	CC-CB221KOM
C150	.01uF, 50V, ceramic disc	CK-CB103PEM
C151	100pF, 500V, mica	CM-SD101KCS
C152	270pF, 500V, mica	CM-SD271KCS
C153	82pF, 50V, ceramic disc	CC-CB820KOM
C154	27pF, 50V, ceramic disc	CC-CB270KOM
C155	.047uF, 50V, ceramic disc	CK-CB473ZFM
C156	.01uF, 50V, ceramic disc	CK-CB103PEM
C157	.01uF, 50V, ceramic disc	CK-CB103PEM
C158	(not used)	
C159	.047uF, 50V, ceramic disc	CK-CB473KFM
C160	.047uF, 50V, mylar	CQ-MB473KCH

Reference Designator	Description	Part No.
C161	.01uF, 50V, ceramic disc	CK-CB103PEM
C162	120pF, 50V, ceramic disc	722413
C163	.01uF, 50V, ceramic disc	CK-CB103PEM
C164	2pF, 50V, ceramic disc	CC-CB020COM
C165	.01uF, 50V, ceramic disc	CK-CB103PEM
C166	10pF, 50V, ceramic disc	CC-CB100DOM
C167	(not used)	
C168	2.2pF, 500V, ceramic disc	CG-2H2R1KNN
C169	.047uF, 50V, mylar	CQ-MB473KCH
C170	.047uF, 50V, mylar	CQ-MB473KCH
C171	.047uF, 50V, mylar	CQ-MB473KCH
C172	.047uF, 50V, mylar	CQ-MB473KCH
C173	.047uF, 50V, mylar	CQ-MB473KCH
C174	3.3uF, 25V, electrolytic	CE-EE3R3ALN
C175	.0047uF, 50V, mylar	CQ-MB472KCH
C176	1uF, 50V, electrolytic	CE-EG010ALN
C177	.033uF, 50V, mylar	CQ-MB333KCH
C178	56pF, 50V, ceramic disc	CC-CB560KPM
C179	(not used)	
C180	560pF, 50V, ceramic disc	CK-CB561KBM
C181	100pF, 50V, ceramic disc	CC-CB101KOM
C182	68pF, 50V, ceramic disc	CC-CB680KPM
C183	10uF, 16V, electrolytic	CE-ED100ALN
C184	(not used)	
C185	47uF, 10V, electrolytic	CE-EC470ALN
C186 through	(not used)	
C189	.01uF, 50V, ceramic disc	CK-CB103PEM
C191	.022uF, 50V, mylar	CQ-MB223KCH
C192	150pF, 50V, ceramic disc	CC-CB151KOM
C193	.01uF, 50V, mylar	CQ-MB103KCH
C194	.01uF, 50V, ceramic disc	CK-CB103PEM
C195	390pF, 50V, ceramic disc	CK-CB391KBM
C196	5.6uF, 25V, tantalum	CS-SE5R6MDN
C197	33uF, 6.3V, electrolytic	CE-EB330ALN
C198	68pF, 50V, ceramic disc	CC-CB680KOM
C199	68pF, 50V, ceramic disc	CC-CB690KOM
C200	390pF, 50V, ceramic disc	CK-CB392KBM
C201	.068uF, 50V, mylar	CQ-MB683KCH
C202	.02uF, 50V, mylar	CQ-MB203KCH
C203	47uF, 16V, electrolytic	CE-ED470ALN
C204	220uF, 16V, electrolytic	CE-AD221ZLS
C205	.068uF, 50V, mylar	CQ-MB683KCH
C206	(not used)	
C207	33uF, 6.3V, electrolytic	CE-EB330ALN
C208	10uF, 16V, electrolytic	CE-ED100ALN
C209	1uF, 50V, electrolytic	CE-EG010ALN
C210	1000uF, 16V, electrolytic	CE-ED102ZUN
C211	47uF, 25V, electrolytic	CE-AE470ZLS
C212	33uF, 6.3V, electrolytic	CE-EB330ALN
C213	.01uF, 50V, ceramic disc	CK-CB103PEM
C214	.01uF, 50V, ceramic disc	CK-CB103PEM
C215	.01uF, 50V, ceramic disc	CK-CB103PEM
C216	.01uF, 50V, ceramic disc	CK-CB103PEM
C217	.047uF, 50V, ceramic disc	CK-CB473ZFM
C218	.047uF, 50V, ceramic disc	CK-CB473ZFM
C219	.047uF, 50V, ceramic disc	CK-CB473ZFM
C220	.047uF, 50V, ceramic disc	CK-CB473ZFM
C221	(not used)	
C222	4.7uF, 25V, electrolytic	CE-EE4R7SMN
C223	39pF, 50V, ceramic disc	CC-CB390KOM
C224	.01uF, 50V, ceramic disc	CK-CB103PEM
C225 through	(not used)	
C241	(not used)	
C242	1uF, 50V, electrolytic	CE-EG010ALN
C243	82pF, 50V, ceramic disc	CC-CB820KOM

Reference Designator	Description	Part No.
C244	.047uF, 50V, ceramic disc	CK-CB473ZFM
C600	.001uF, 50V, ceramic disc	722849
C601	1pF, 50V, ceramic disc	722447
C602	82pF, 50V, ceramic disc	722410
CF101	filter, ceramic	FB-R455A08M
CH101	choke coil	LF-119H001Y
D101	1TT410, silicon	QD-CTT410KQ
D102	MZ205, silicon, zener	QD-ZMZ205KE
D103	RD9.1E, silicon, zener	QD-ZRD9EXAA
D104	1S1885, silicon, zener	QD-SS1885XT
D105	V06C, silicon	QD-SV06CXXB
D106	1S1555, silicon	QD-SS1555XT
D107	1S1555, silicon	QD-SS1555XT
D108	1S1555, silicon	QD-SS1555XT
D109	(not used)	
D110	1N60, germanium	QD-G1N60XXT
D111	1N60, germanium	QD-G1N60XXT
D112	(not used)	
D600	1N4148 diode	760037
IC101	PLL02A	QQ-OPLL02AO
IC102	BA521	QQ-MBA521AX
L101	rf coil	LF-220KD01N
L102	(not used)	
L103	rf coil	TR-10CD004S
L104	rf coil	TR-10CD005S
L105	rf coil	LF-2R2KD01N
L106	rf coil	TR-A5CZ001M
L107	rf coil	LF-680KD01N
L108	rf coil	LD-ADX3825M
L109	rf coil	TR-A5CZ002M
L110	rf coil	TR-A5CZ003M
L111	rf coil	LF-680KD01N
L112	rf coil	TR-07MB008N
L113	rf coil	LD-ADB4024B
L114	rf coil	LD-ADB4024B
L115	(not used)	
L116	rf coil	LA-1KE1011A
Q101	(MITSUBISHI) MPS3704	QT-C0710XBE
Q102	(MITSUBISHI) 2SC710D	QT-C0710XBE
Q103	(NEC) 2SC829D	QT-C0829XDN
Q104	(MITSUBISHI) 2SC710D	QT-C0710XBE
Q105	(MITSUBISHI) 2SC710D	QT-C0710XBE
Q106	(MITSUBISHI) 2SC1318Q	QT-C1318XAN
Q107	(MITSUBISHI) 2SC710D	QT-C0710XBE
Q108	2SC1359B	QT-C1359XAN
Q109	(MITSUBISHI) 2SC710D	QT-C0710XBE
Q110	(MITSUBISHI) 2SC710D	QT-C0710XBE
Q111	2SC1687	QT-C1687XAN
Q112	(SONY) 2SC1760-3	QT-C1760XAS
Q113	(NEC) 2SC1306	QT-C1306XZA
Q114	2SC1047B	QT-C1047SAN
Q115	2SC1359B	QT-C1359XAN
Q116	(NEC) 2SC829C	QT-C0829XBN
Q117	(MITSUBISHI) 2SC710D	QT-C0710XBE
Q118	(NEC) 2SC829C	QT-C0829XBN
Q119	(NEC) 2SC829C	QT-C0829XBN
Q120	2SC372Y	QT-C0372XAT

Reference Designator	Description	Part No.
Q121	2SC828P.Q	QT-C0828XDN
Q122	2SC828P	QT-C0828XAN
		722552
R101	330, 5%, 1/4w, carbon film	RD-25RJ104D
R102	100k, 5%, 1/4w, carbon film	RD-25RJ1052D
R103	1.5k, 5%, 1/4w, carbon film	RD-25RJ152D
R104	1.5k, 5%, 1/4w, carbon film	RD-25RJ224D
R105	220k, 5%, 1/4w, carbon film	RD-25RJ152D
R106	1.5k, 5%, 1/4w, carbon film	RD-25RJ104D
R107	100k, 5%, 1/4w, carbon film	RD-25RJ152D
R108	1.5k, 5%, 1/4w, carbon film	RD-25RJ104D
R109	100k, 5%, 1/4w, carbon film	RD-25RJ102D
R110	1k, 5%, 1/4w, carbon film	RD-25RJ102D
R111	1k, 5%, 1/4w, carbon film	RD-25RJ104D
R112	100k, 5%, 1/4w, carbon film	RD-25RJ332D
R113	3.3k, 5%, 1/4w, carbon film	RD-25RJ471D
R114	470, 5%, 1/4w, carbon film	RD-25RJ223D
R115	22k, 5%, 1/4w, carbon film	RD-25RJ471D
R116	470, 5%, 1/4w, carbon film	RD-25RJ333D
R117	33k, 5%, 1/4w, carbon film	RG-HAPJ101B
R118	100, 5%, 1/2w, metal oxide	722576
R119	3.3k, 5%, 1/4w, carbon film	RD-25RJ104D
R120	100k, 5%, 1/4w, carbon film	722572
R121	2.2k, 5%, 1/4w, carbon film	RD-25RJ102D
R122	1k, 5%, 1/4w, carbon film	RD-25RJ823D
R123	82k, 5%, 1/4w, carbon film	RD-25RJ271D
R124	270, 5%, 1/4w, carbon film	RD-25RJ103D
R125	10k, 5%, 1/4w, carbon film	
R126	(not used)	
R127	68, 5%, 1/4w, carbon film	RD-25RJ380D
R128	100, 5%, 1/4w, carbon film	RD-25RJ101D
R129	220, 5%, 1/4w, carbon film	RD-25RJ221D
R130	47, 5%, 1/4w, carbon film	RD-25RJ470D
R131	10, 5%, 1/2w, metal oxide	RX-HAPJ100B
R132	47k, 5%, 1/4w, carbon film	RD-25RJ473D
R133	1k, 5%, 1/4w, carbon film	RD-25RJ102D
R134	680, 5%, 1/4w, carbon film	RD-25RJ681D
R135	1.5k, 5%, 1/4w, carbon film	RD-25RJ152D
R136	100, 5%, 1/4w, carbon film	RD-25RJ101D
R137	1.8k, 5%, 1/4w, carbon film	RD-25RJ182D
R138	1k, 5%, 1/4w, carbon film	RD-25RJ102D
R139	470, 5%, 1/4w, carbon film	RD-25RJ471D
R140	100k, 5%, 1/4w, carbon film	RD-25RJ100K
R141	1k, 5%, 1/4w, carbon film	RD-25RJ102D
R142	4.7k, 5%, 1/4w, carbon film	RD-25RJ472D
R143	470, 5%, 1/4w, carbon film	RD-25RJ471D
R144	4.7k, 5%, 1/4w, carbon film	RD-25RJ473D
R145	220, 5%, 1/4w, carbon film	RD-25RJ221D
R146	330, 5%, 1/4w, carbon film	RD-25RJ331D
R147	1.5k, 5%, 1/4w, carbon film	RD-25RJ152D
R148	27k, 5%, 1/4w, carbon film	RD-25RJ273D
R149	220, 5%, 1/4w, carbon film	RD-25RJ221D
R150	47, 5%, 1/4w, carbon film	RD-25RJ470D
R151	22k, 5%, 1/4w, carbon film	RD-25RJ223D
R152	270k, 5%, 1/4w, carbon film	RD-25RJ274D
R153	47k, 5%, 1/4w, carbon film	RD-25RJ473D
R154	68k, 5%, 1/4w, carbon film	RD-25RJ683D
R155	33k, 5%, 1/4w, carbon film	RD-25RJ333D
R156	47k, 5%, 1/4w, carbon film	RD-25RJ473D
R157	(not used)	
R158	100k, 5%, 1/4w, carbon film	RD-25RJ104D
R159	1.5k, 5%, 1/4w, carbon film	RD-25RJ152D
R160	1.5k, 5%, 1/4w, carbon film	RD-25RJ152D
R161	22, 5%, 1/2w, metal oxide	RG-HAPJ220B
R162	1k, 5%, 1/4w, carbon film	RD-25RJ102D

Reference Designator	Description	Part No.
R163	390, 5%, 1/4w, carbon film	RD-25RJ391D
R164	10k, 5%, 1/4w, carbon film	RD-25RJ103D
R165	820, 5%, 1/4w, carbon film	RD-25RJ821D
R166	470, 5%, 1/4w, carbon film	RD-25RJ471D
R167	27k, 5%, 1/4w, carbon film	RD-25RJ273D
R168	3.3k, 5%, 1/4w, carbon film	RD-25RJ332D
R169	220k, 5%, 1/4w, carbon film	RD-25RJ224D
R170	22k, 5%, 1/4w, carbon film	RD-25RJ223D
R171	150, 5%, 1/4w, carbon film	RD-25RJ151D
R172	2.2k, 5%, 1/4w, carbon film	RD-25RJ222D
R173	(not used)	
R174	10, 5%, 1/4w, carbon film	RD-25RJ100D
R175	10k, 5%, 1/4w, carbon film	RD-25RJ103D
R176	82, 5%, 1/4w, carbon film	RD-25RJ820D
R177	270, 5%, 1/4w, carbon film	RD-25RJ271D
R178	680, 5%, 1/4w, carbon film	RD-25RJ681D
R179	22k, 5%, 1/4w, carbon film	RD-25RJ223D
R180	1.8k, 5%, 1/4w, carbon film	RD-25RJ182D
R181	18k, 5%, 1/4w, carbon film	RD-25RJ183D
R182	100, 5%, 1/4w, carbon film	RD-25RJ101D
R183 through R193	(not used)	
R194		
R195 through R203	(not used)	
R600	18, 5%, 1/4w, carbon film	722594
R601	5.6k, 5%, 1/4w, carbon film	RD14WJ562N
RV101	10k, potentiometer	RP-GNB10301
RV102	2k, potentiometer	RP-GNB20201
T101	rf transformer	TR-10DA002T
T102	rf transformer	TR-10CB001S
T103	rf transformer	TR-10CP005S
T104	rf transformer	TR-10MP003T
T105	rf transformer	TR-10CA005S
T106	rf transformer	TR-07MB008N
T108	rf transformer	TR-07LA005N
T109	rf transformer	TR-07LA023N
T110	rf transformer	TR-G25B001W
T111	rf transformer	TR-10MB003T
X101	11.8066 MHz, crystal	XA-S1B4001N
X102	10.695 MHz crystal	XA-S1B3002N
X103	10.240 MHz crystal	XA-S1B3001N
	heat sink - for IC102	ML-454AD002
	heat sink - for IC102	MS-327AD005
	heat sink - for Q113	ML-463AD001
	resistor array, 10k, (x6)	RA-B103K06D

Channel Selector P.C. Board

Reference Designator	Description	Part No.
	channel selector p.c. board, complete	878928
	channel selector p.c. board, plated and drilled	750070
C301 through		
C302	(not used)	
C304	.01uF, 50V, ceramic disc	720106
C305	.001uF, 25V, ceramic disc	722849
C306	.01uF, 25V, ceramic disc	720106
C307	.01uF, 25V, ceramic disc	720106
C308	10uF, 16V, ceramic disc	720144
C309	.0022uF, 50V, ceramic disc	720147
C310	.1uF, 25V, ceramic disc	720146
C311	47uF, 16V, electrolytic	722347
C312	.01uF, 25V, ceramic disc	720106
C313	.01uF, 25V, ceramic disc	722440
C314	(not used)	
C315	.001uF, 50V, ceramic disc	722849
D301	1N4148	760037
Q301	MPS5172	760238
R301	470, 10%, 1/4w, carbon	722556
R302	470, 10%, 1/4w, carbon	722556
R303	470, 10%, 1/4w, carbon	722556
R304	470, 10%, 1/4w, carbon	722556
R305	470, 10%, 1/4w, carbon	722556
R306	470, 10%, 1/4w, carbon	722556
R307	470, 10%, 1/4w, carbon	722556
R308	1.2k, 10%, 1/4w, carbon	722566
R310 and		
R311	(not used)	
R312	330, 10%, 1/4w, carbon	720086
R313	100, 10%, 1/4w, carbon	720130
R314	3.3k, 10%, 1/4w, carbon	720109
R315	22k, 10%, 1/4w, carbon	720129
R316	22k, 10%, 1/4w, carbon	720129
R317	3.3k, 10%, 1/4w, carbon	720109
T301	transformer, microphone	730036
U301 through		
U303	(not used)	
U304	MC3340P attenuator	760105

Microphone Components

Reference Designator	Description	Part No.
CR401	MV5274C, led, green	760310
CR402	TIL 220, Led, red	760118
R401	390, 5%, 1/2w, carbon	721301
R402	150, 10%, 1/2w, carbon	721314
R403	3.9, 10%, 1/2w, carbon	721346
R404	820, 5%, 1/2w, carbon	721334
R405	470, 5%, 1/2w, carbon	722733
R406 through R415	(not used)	
R416	20k, 1/4w, potentiometer (part of on/off switch)	722340
R417	10k, 1/4w, potentiometer (squelch control)	722339
S401	switch, 40 position rotary	700048
S402	switch, (on/off)	722340
S403	switch, mic ptt.	700326
S	speaker, 8 ohm	730035

Chassis Mounted Components

Reference Designator	Description	Part No.
C1	330pF, 50V, mica	721681
C2	.01uF, 25V, ceramic disc	721665
C3	.01uF, 25V, ceramic disc	721665
C316	.001uF, 50V, ceramic disc	722849
C317	.01uF, 50V, ceramic disc	722440
C318	.0047uh, 50V, ceramic disc	722853
C604	330pF, 50V, mica	721681
C605	220pF, 50V, ceramic disc	CC-CB221KOM
C606	.001uF, 50V, ceramic disc	722849
C607	.001uF, 50V, ceramic disc	722849
C608	(not used)	
C609	.001uF, 50V, ceramic disc	722849
C610	.001uF, 50V, ceramic disc	722849
L600	18uh, coil	722871
L601	6.8uh, rf choke	722857
L602	1.5uh, (full leads)	722488
L603	6.8uh, rf choke	722857
L604	6.8uh, rf choke	722857
J1	jack, antenna	650065
J2	jack, external speaker	650076
J3	jack, squelch override	650102
	washer, flat fiber	560040
	washer, extruded fiber	560039
	fuse, 3 amp	710027
	holder, fuse	710027

**Mechanical Parts
Transceiver**

Part No.	Description	Qty
870874	chassis, main frame	1
460092	case, upper	1
460093	case, lower	1
450308	strain relief, power cord	1
6220076	cord, power, 2 lead	1
450308	strain relief, transceiver cable	1
650080	plug, amphenol 16 pin	1

Microphone

460116	case, plastic (front)	1
460117	case, plastic (rear)	1
460118	cover, plastic (front)	1
620073	cord, microphone coil	1
460098	knob, volume control	1
460098	knob, squelch control	1
460153	button, push-to-talk	1
460175	button, microphone hanger	1
450295	filter, channel display	1
450321	plate, 40 channel dial	1

Accessory Parts

Part No.	Description	Qty
350629	holder, microphone	1
380279	bracket, connector mounting	1

Schematic Diagram

HY-GAIN DE PUERTO RICO, INC.

P.O. Box 68 State Hwy 31, Km. 4.0
Naguabo, Puerto Rico 00718