

SEE PARTS LIST FOR ALTERNATE VALUE OR APPLICATION

DC COIL RESISTANCE VALUES UNDER ONE OHM NOT SHOWN ON SCHEMATIC DIAGRAM

ARROWS ON CONTROLS INDICATE CLOCKWISE ROTATION (CONTROL VIEWED FROM SHAFT END)

SELECTOR SW (M6) SHOWN IN "RECEIVE" POSITION

SW SEQUENCE

1. TRANSMIT (CW)
2. RECEIVE
3. TRANSMIT

SPRING RETURN

117VAC 26 WATTS (RECEIVE)
32 WATTS (TRANSMIT)

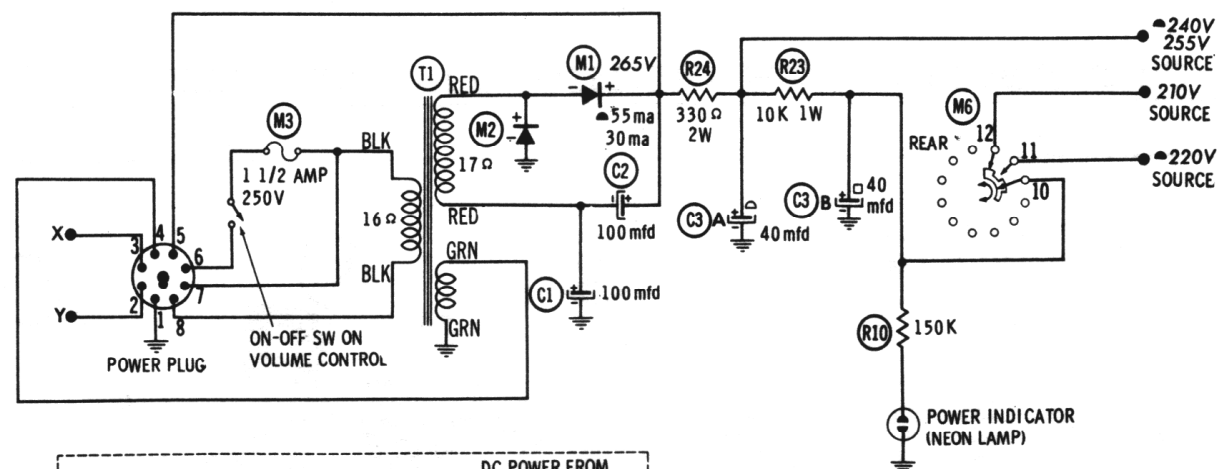
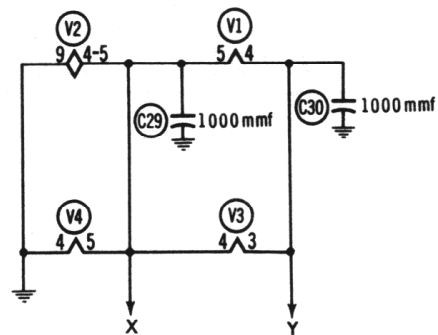
RESISTANCE READINGS

ITEM	TUBE	Pin 1	Pin 2	Pin 3	Pin 4	Pin 5	Pin 6	Pin 7	Pin 8	Pin 9
V1	6AN8	†800K	†11 meg	3.5 Ω	FILS	FILS	†15K	†230K	.1 Ω	470 Ω
V2	ECC83/12AX7	†480K	10 meg	0 Ω	FILS	FILS	†220K	270K	†1.3 meg	3300 Ω
V3	6AQ5A	270K	470 Ω	FILS	FILS	†760 Ω	†330 Ω	270K		
V4	6AU8A	0 Ω	47K	†22K	FILS	FILS	0 Ω	22K	†22K	†710 Ω

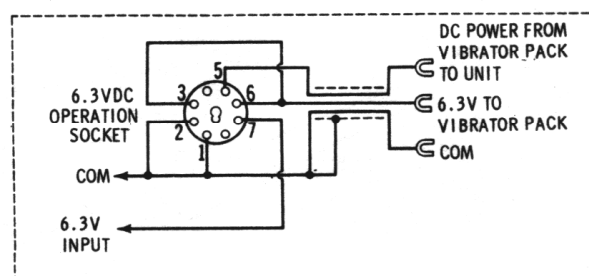
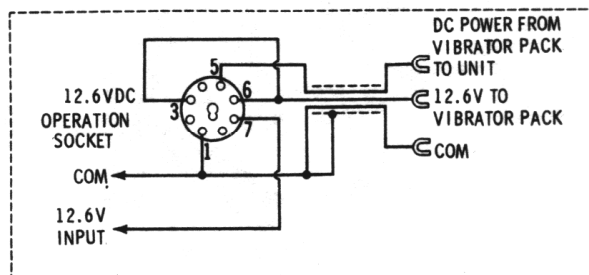
ALL MEASUREMENTS TAKEN IN "RECEIVE" POSITION UNLESS OTHERWISE INDICATED

† MEASURED FROM OUTPUT OF M1

▲ MEASURED IN "TRANSMIT" POSITION



1. DC voltage measurements taken with vacuum tube voltmeter; AC voltages measured with 1000 ohm per volt voltmeter.
2. Socket connections are shown as bottom views.
3. Measured values are from socket pin to common ground.
4. Line voltage maintained at 117 volts for voltage readings.
5. Nominal tolerance of component values makes possible a variation of ±15% in voltage and resistance readings.
6. All controls at minimum, proper output load connected.



HEATH MODELS
CB-1, W-CB-1