

This Manual is provided by
CBTricks.com

Someone who wanted to help you repair your equipment
scanned this manual.

If you would like to help us put more manuals online support us.

Supporters of CBTricks.com paid for the hosting so you would have this file.

CBTricks.com is a non-commercial personal website was created to help promote the exchange of service, modification, technically oriented information, and historical information aimed at the Citizens Band, GMRS (CB "A" Band), MURS, Amateur Radios and RF Amps.

CBTricks.com is not sponsored by or connected to any Retailer, Radio, Antenna Manufacturer or Amp Manufacturer, or affiliated with any site links shown in the links database. The use of product or company names on my web site is not endorsement of that product or company.

If your company would like to provide technical information to be featured on this site I will put up on the site as long as I can do it in a non-commercial way.

The site is supported with donation from users, friends and selling of the Galaxy Service Manual CD to cover some of the costs of having this website on the Internet instead of relying on banner ads, pop-up ads, commercial links, etc. to pay my costs. Thus I do not accept advertising banners or pop-up/pop-under advertising or other marketing/sales links or gimmicks on my website.

ALL the money from donations is used for CBTricks.com I didn't do all the work to make money (I have a day job). I didn't do all this work for someone else to make money also, for example the ebay CD sellers.

All Trademarks, Logos, and Brand Names are the property of their respective owners.
This information is not provided by, or affiliated in any way with any radio or antenna Manufacturers.
Thank you for any support you can give.

PHOTOFACT® Folder



GONSET MODELS
G-11-3303, G-11-3304, G-11-3305



MODEL G-11-3304

GONSET MODELS
G-11-3303, G-11-3304, G-11-3305

TRADE NAME	Gonset Models G-11-3303, G-11-3304, G-11-3305
MANUFACTURER	Gonset, Div. of Young Spring & Wire Corp., 801 S. Main Street, Burbank, California
TYPE SET	Crystal Controlled Single Channel 9 Tube Citizens Band Transmitter-Receiver
POWER SUPPLY	Model G-11-3303: 110-120 Volts AC, 60 Cycles Model G-11-3304: 12 Volt Storage Battery Model G-11-3305: 6 Volt Storage Battery
RATING	4.6 Amp. @12.6 Volts DC (or) 9.2 Amp. @6.3 Volts DC
TUNING RANGE	Any one of Citizens Band Channels 1 thru 22

NOTICE

ONLY THOSE PERSONS PROPERLY LICENSED BY FCC ARE PERMITTED TO MAKE CRYSTAL SUBSTITUTION OR EFFECT REPAIRS ON THE TRANSMITTER PORTION OF THIS UNIT.

ALIGNMENT INSTRUCTIONS

RECEIVER

Connect DC probe of VTVM to point \diamond , Common to chassis. Turn Squelch Control R2 to maximum clockwise direction.

Use a test transmitter on the proper channel, align A1, A2, A3, A4, A5 and A6 for maximum deflection on VTVM. (If signal is too strong, remove antenna to reduce signal strength sufficiently to keep AVC voltage only slightly above no signal level).

Adjust A7 for maximum receiver noise.

TRANSMITTER

Using a Frequency Meter, adjust A8 to frequency indicated on oscillator crystal, (within 100 cps).

Connect DC probe of VTVM to point \diamond , Common to chassis. Adjust A9 for maximum deflection.

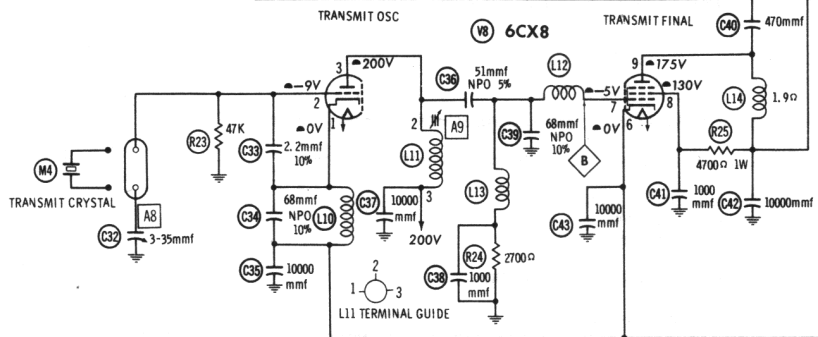
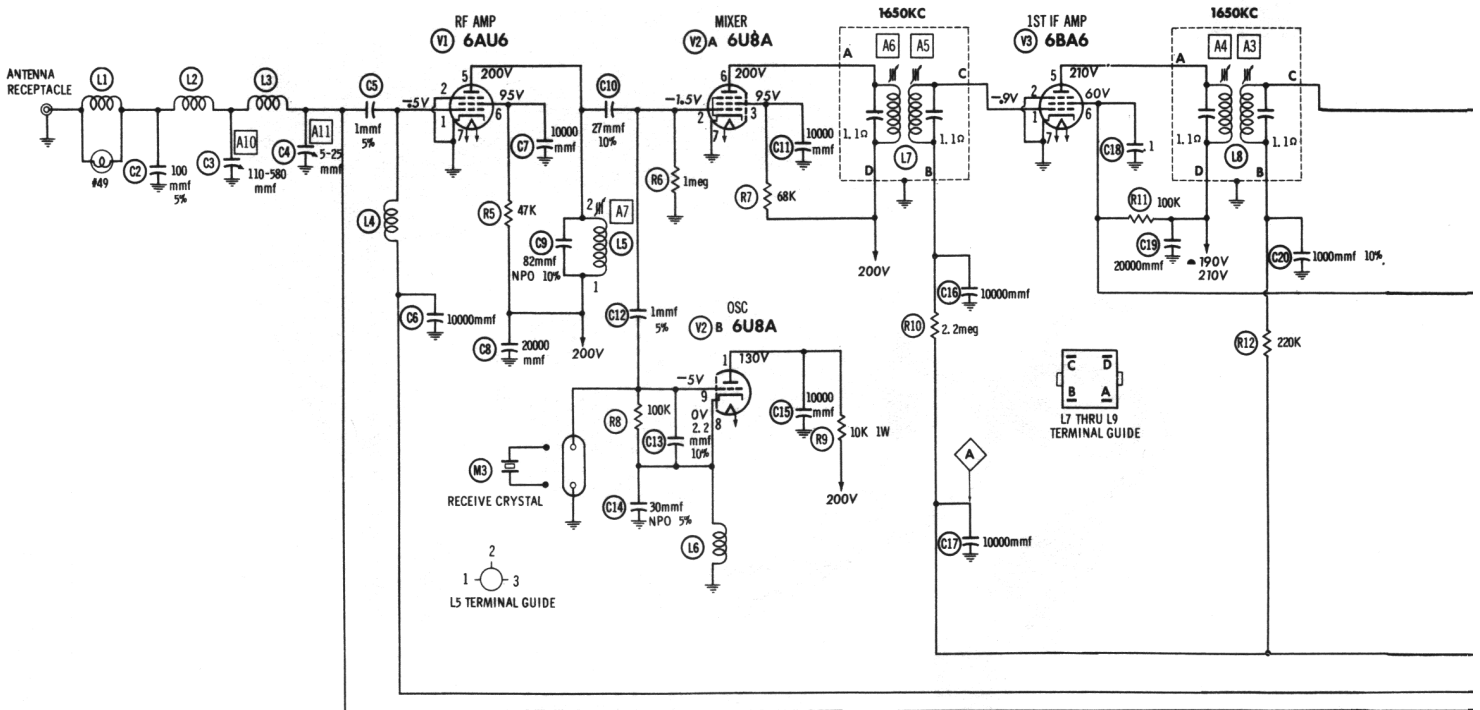
Adjust A10 and A11 alternately for maximum tuning indicator lamp brightness, adjusting A11 last.

HOWARD W. SAMS & CO., INC. Indianapolis 6, Indiana

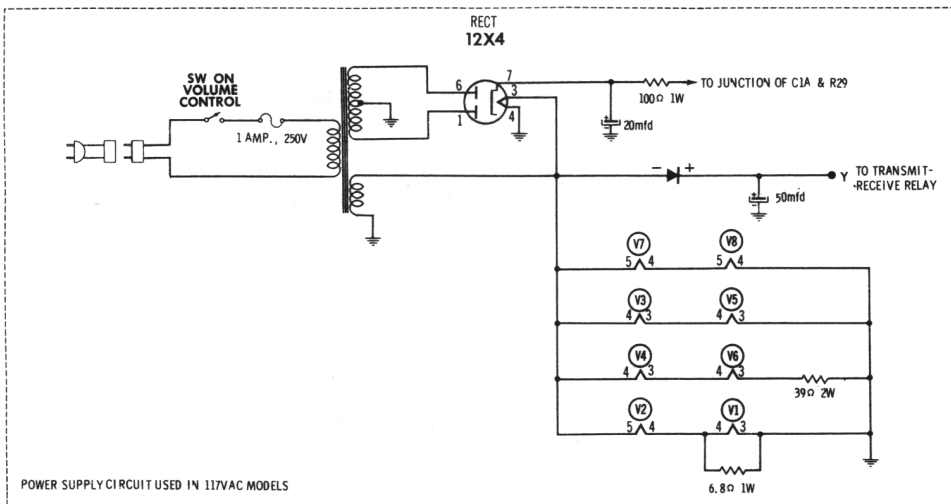
The listing of any available replacement part herein does not constitute in any case a recommendation, warranty or guaranty by Howard W. Sams & Co., Inc., as to the quality and suitability of such replacement part. The numbers of these parts have been compiled from information furnished to Howard W. Sams & Co., Inc., by the manufacturers of KZ405

the particular type of replacement part listed. Reproduction or use, without express permission, of editorial or pictorial content, in any manner, is prohibited. No patent liability is assumed with respect to the use of the information contained herein. © 1961 Howard W. Sams & Co., Inc., Indianapolis 6, Indiana. Printed in U.S. of America



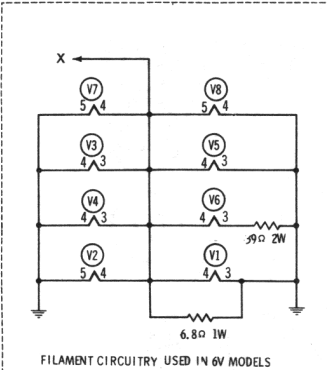
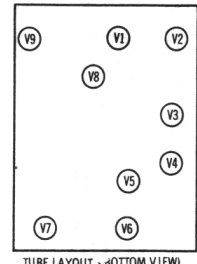
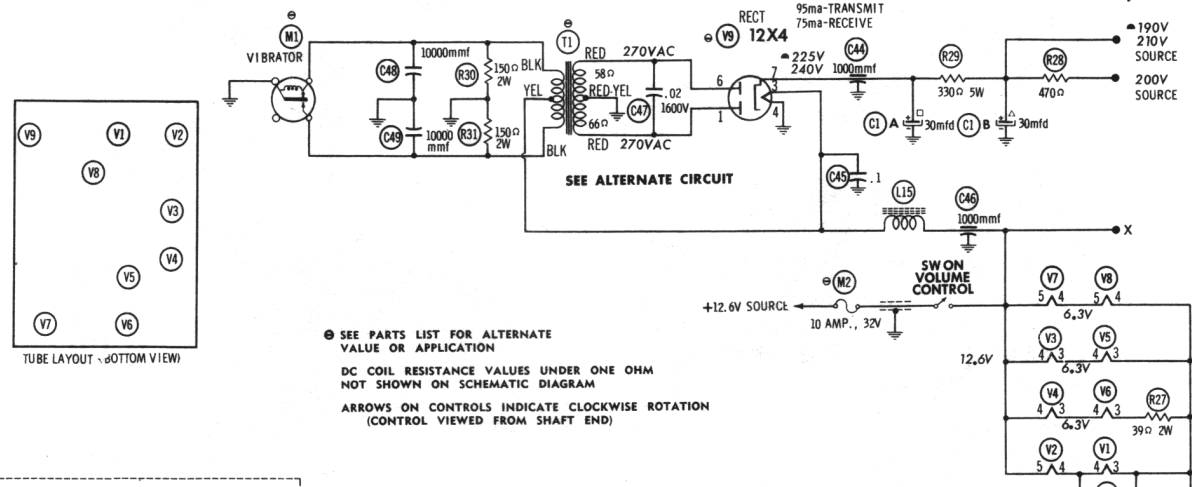
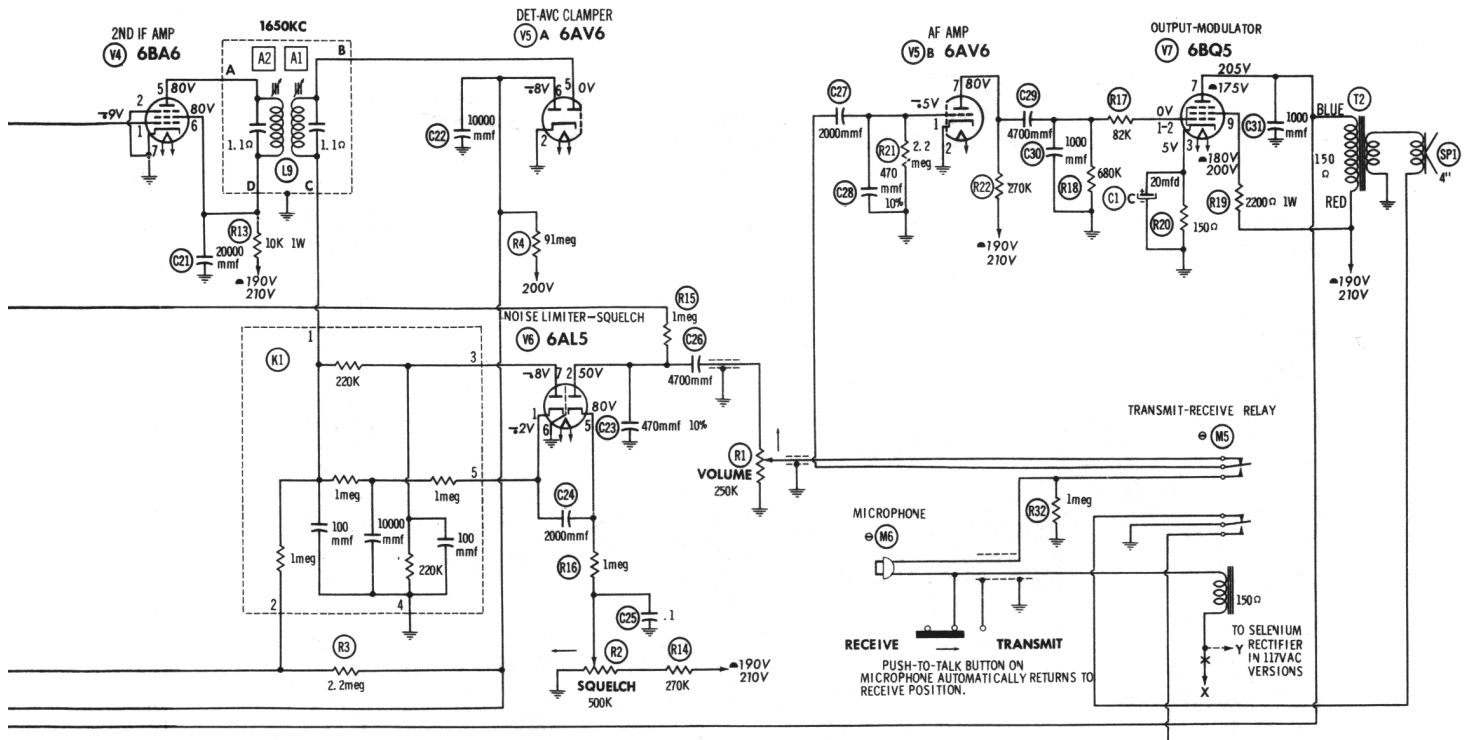


1. DC voltage measurements taken with vacuum tube voltmeter; AC voltages measured with 1000 ohm per volt voltmeter.
2. Socket connections are shown as bottom views.
3. Measured values are from socket pin to common ground.
4. Line voltage maintained at 117 volts for voltage readings.
5. Nominal tolerance of component values makes possible a variation of ±1% in voltage and resistance readings.
6. All controls at minimum, proper output load connected.



POWER SUPPLY CIRCUIT USED IN 117VAC MODELS

NUMBERS ASSIGNED TO COILS, SWITCHES, PLUGS, SOCKETS, AND TRANSFORMERS ARE TO FACILITATE CIRCUIT TRACING OR COMPONENT REPLACEMENT AND MAY NOT NECESSARILY BE FOUND ON THE UNIT.

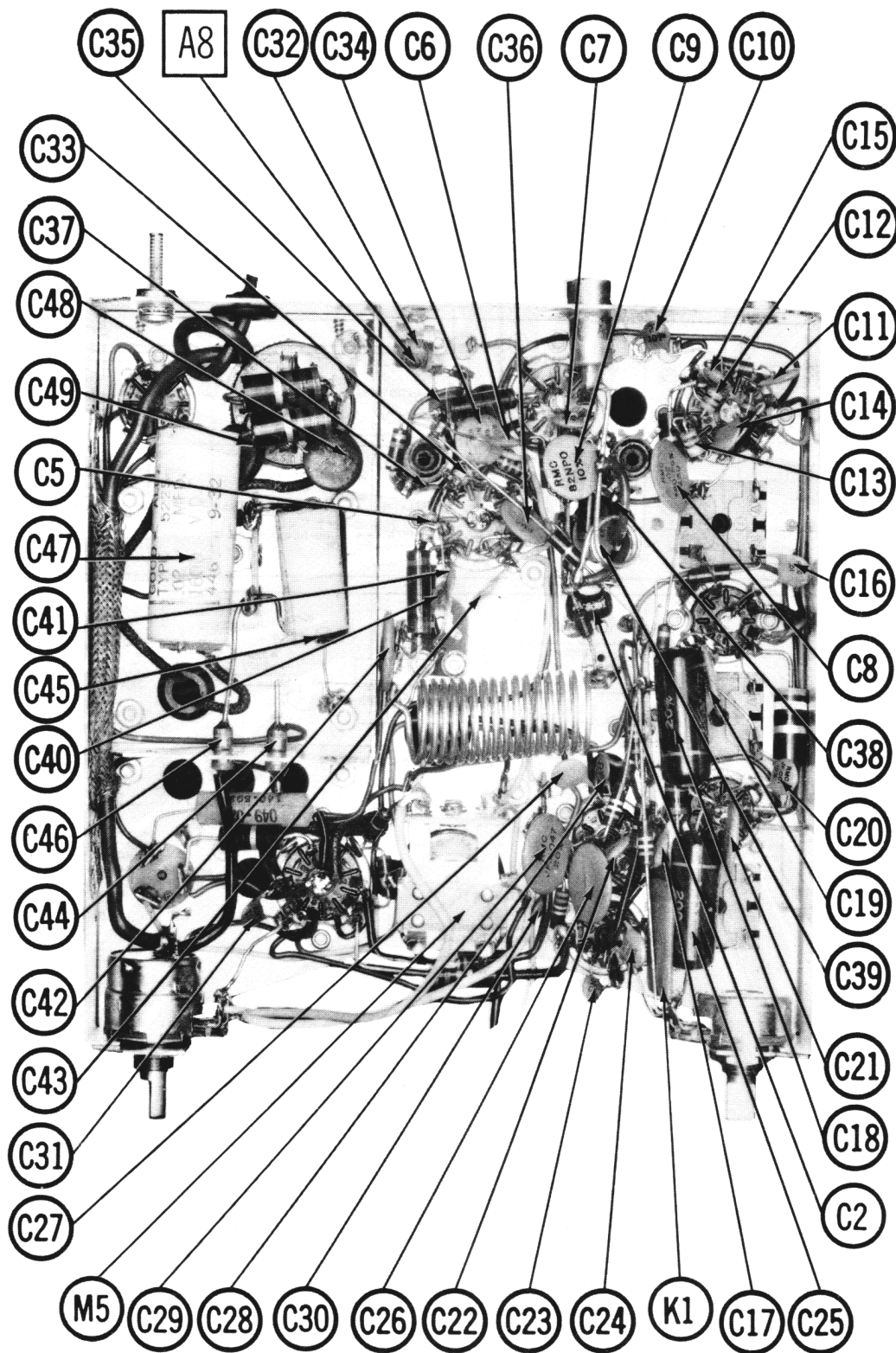


SEE PARTS LIST FOR ALTERNATE VALUE OR APPLICATION
 DC COIL RESISTANCE VALUES UNDER ONE OHM NOT SHOWN ON SCHEMATIC DIAGRAM
 ARROWS ON CONTROLS INDICATE CLOCKWISE ROTATION (CONTROL VIEWED FROM SHAFT END)

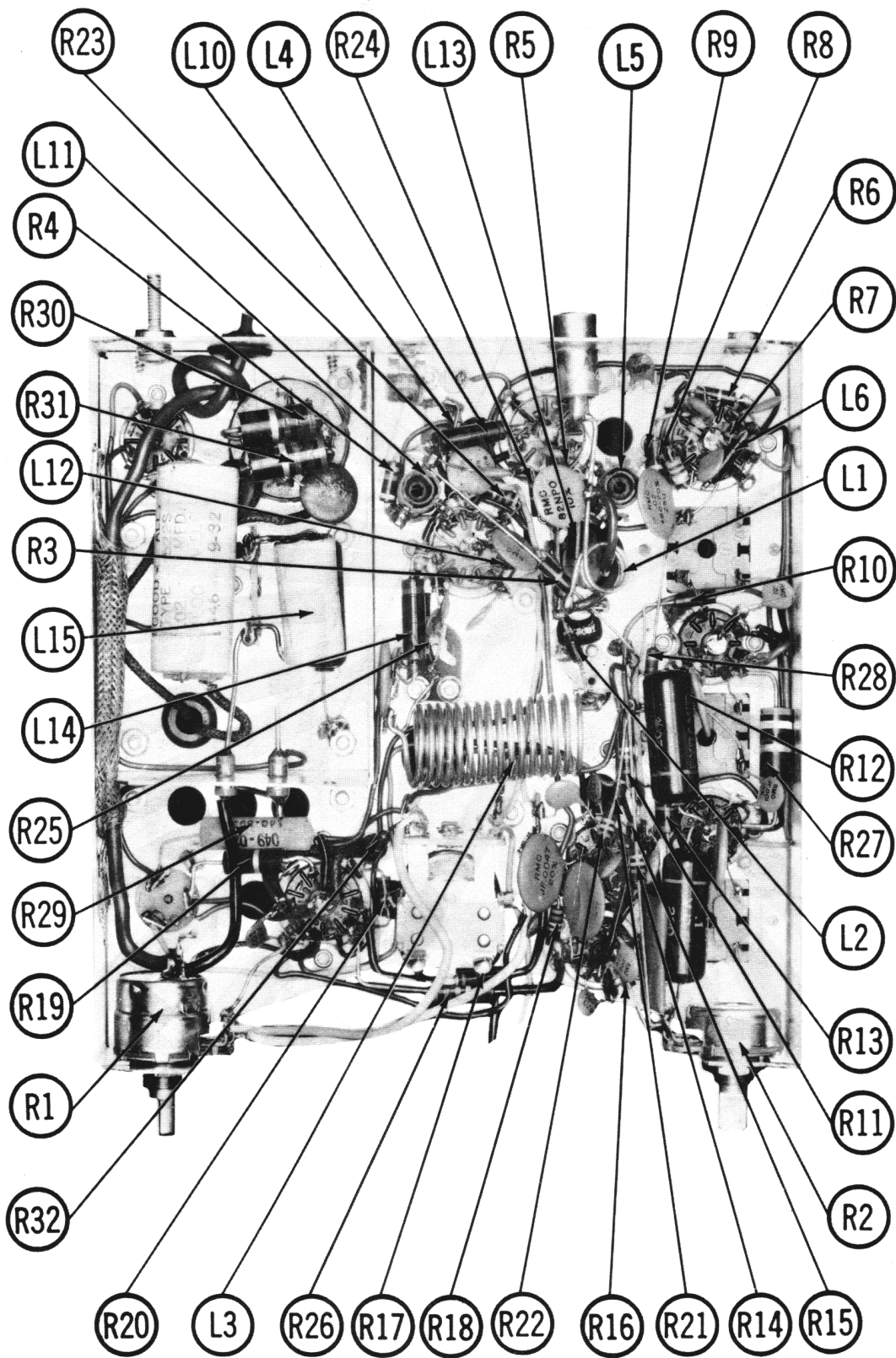
RESISTANCE READINGS

ITEM	TUBE	Pin 1	Pin 2	Pin 3	Pin 4	Pin 5	Pin 6	Pin 7	Pin 8	Pin 9
V1	6AU6	3.5 meg	0 Ω	0 Ω	1 Ω	†800 Ω	†47K	0 Ω		
V2	6U8A	†10K	1 meg	†68K	1 Ω	2 Ω	†800 Ω	0 Ω	0 Ω	100K
V3	6BA6	3.5 meg	0 Ω	1 Ω	2 Ω	†30 Ω	†100K	0 Ω		
V4	6BA6	1.6 meg	0 Ω	.1 Ω	2 Ω	†10K	†10K	0 Ω		
V5	6AV6	2.2 meg	0 Ω	0 Ω	1 Ω	440K	3.5 meg	†270K		
V6	6AL5	2.4 meg	†1.1 meg	3 Ω	1 Ω	1.3 meg	0 Ω	220K		
V7	6BQ5	NC	760K	150 Ω	1 Ω	2 Ω	NC	†480 Ω	NC	†2500 Ω
V8	6CX8	0 Ω	47K	†800 Ω	0 Ω	1 Ω	0 Ω	2700 Ω	†5200 Ω	†480 Ω
V9	12X4	66 Ω	NC	2 Ω	0 Ω	NC	58 Ω	†		

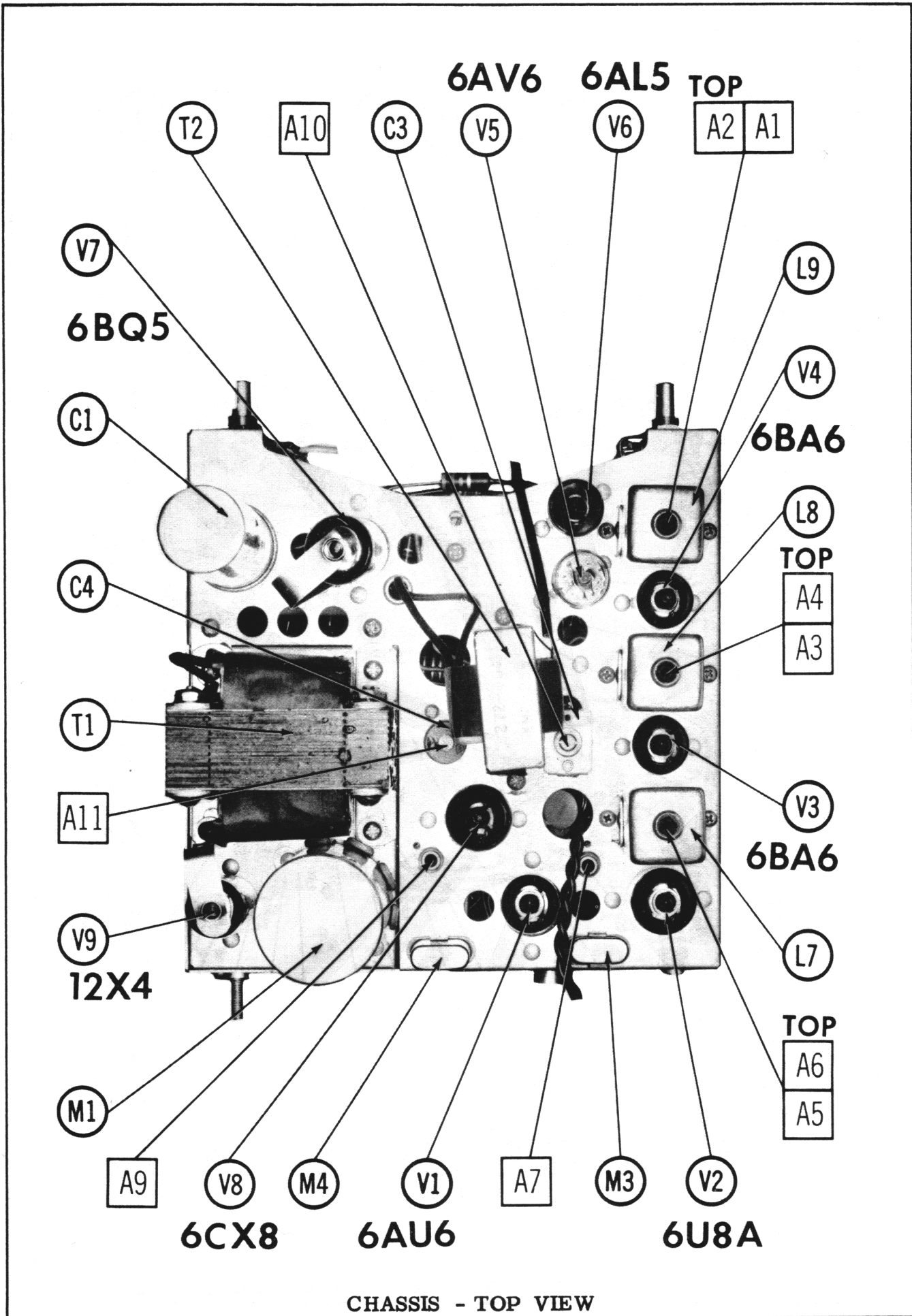
ALL MEASUREMENTS MADE IN "RECEIVE" POSITION UNLESS OTHERWISE DESIGNATED.
 † MEASURED IN "TRANSMIT" POSITION.
 † MEASURED FROM PIN 7 OF V9.
 † THIS READING WILL VARY DEPENDING UPON THE CONDITION OF THE ELECTROLYTIC IN THE CIRCUIT.
 NC NO CONNECTION



CHASSIS BOTTOM VIEW-ALIGNMENT, CAPACITOR & MISC. IDENT.



CHASSIS BOTTOM VIEW-RESISTOR & INDUCTOR IDENT.



CHASSIS - TOP VIEW

PARTS LIST AND DESCRIPTIONS

TUBES

ITEM No.	GENERAL ELECTRIC		RAYTHEON		SYLVANIA	
	USE	TYPE	USE	TYPE	USE	TYPE
V1	RF Amplifier	6AU6	Noise Lim. -Squelch			6AL5
V2	Mixer-Osc.	6U8A	Output-Modulator			6BQ5
V3	1st IF Amp.	6BA6	Trans. Osc. -Trans. Final Rectifier			6CX8
V4	2nd IF Amp.	6BA6				12X4 *
V5	Det. -AVC Clamper-AF Amp.	6AV6				

* Model 3305 uses 6X4 in this application.

ELECTROLYTIC CAPACITORS

ITEM No.	RATING		REPLACEMENT DATA				
	CAP.	VOLT.	AEROVOX PART No.	GONSET PART No.	MALLORY PART No.	SPRAGUE PART No.	NOTES
C1A	30	350	AFH3-169	073-061	C0830	FP331	TMT-3334
B	30	300					TVL-3620
C	20	25					

FIXED CAPACITORS (cont)

ITEM No.	RATING	REMARKS	REPLACEMENT DATA					
			AEROVOX PART No.	CENTRALAB PART No.	CORNELL-DUBILIER PART No.	ELMENC0 PART No.	MALLORY PART No.	SPRAGUE PART No.
C44	1000		EF-001	MFT-1000	CCF-102	CCF-102	CT280A	
C45	.1 200V		P288N-1	DF-104	2DF-3-104	2DF-3-104	GEM-201	
C46	1000		EF-001	MFT-1000	CCF-102	CCF-102	CT280A	
C47	.02 1600V		P1684CM-02		16DP-4-203	16DP-4-203	GEM-1612	
C48	10000		BPD-01	DD-103	CCD-103	CCD-103	B-110	
C49	10000		BPD-01	DD-103	CCD-103	CCD-103	B-110	

Gonsset Part Number.

CONTROLS

ITEM No.	RATING		REPLACEMENT DATA					
	RESIST. ANCE	WATTS	GONSET PART No.	CENTRALAB PART No.	CLAROSTAT PART No.	CTS-IRC PART No.	MALLORY PART No.	INSTALLATION NOTES
R1A	250K	1/2	052-049	B-51	A47-250K-Z	Q13-130	U44	Volume
B	Shaft Switch			Not Req.	SWF-12	Not Req.	US-26	Power Off-On
C	500K			KR-1	A47-500K-S	76-1	U50	Squelch
R2A	500K	1/2	052-048	B-59		Q11-133	U50	
B	Shaft			Not Req.	FS-3	Not Req.	Not Req.	

FIXED CAPACITORS

Capacity values given in the rating column are in mfd. for Paper Capacitors, and in mmfd. for Mica and Ceramic Capacitors.

ITEM No.	RATING	REMARKS	REPLACEMENT DATA					
			AEROVOX PART No.	CENTRALAB PART No.	CORNELL-DUBILIER PART No.	ELMENC0 PART No.	MALLORY PART No.	SPRAGUE PART No.
C2	100 5%		1469-0001	TCZ-100	22R5T1	CM-19B-101K	MCB235	MS-31
C3	110-560	#089-.024				46T		
C4	5-25	#089-.031						
C5	1 5%		NPO-S1.1.0	827C	H-0581	CCD-103	CNO-510	IOTCC-V10
C6	10000		BPD-01	DD-103	BYB6S2	CCD-103	TA-110	TG-S10
C7	10000		BPD-02	DD-103	BYB6S2	CCD-103	TA-110	TG-S10
C8	20000		BPD-02	DD-103	BYB6S2	CCD-103	TA-110	TG-S10
C9	82 NPO 10%		D1-27	DD-270	L10Q27	CCD-270	CNO-482	IOTCC-Q82
C10	27 10%		BPD-01	DD-103	H-0581	CCD-103	TA-110	TG-S10
C11	10000		NPO-S1.1.0	TCZ-1			CNO-510	IOTCC-V10
C12	1 5%		NPO-S1.2.2	TCZ-30	C10V22C	CCO-2R2	CNO-522	IOTCC-V22
C13	2.0 10%		BPD-01	DD-103	H-0581	CCD-103	TA-110	TG-S10
C14	30 NPO 5%		BPD-01	DD-103	H-0581	CCD-103	TA-110	TG-S10
C15	10000		BPD-01	DD-103	H-0581	CCD-103	TA-110	TG-S10
C16	10000		BPD-01	DD-103	H-0581	CCD-103	TA-110	TG-S10
C17	10000		BPD-01	DD-103	H-0581	CCD-103	TA-110	TG-S10
C18	1 200V		P288N-1	DF-104	CUB2P1	2DP-3-104	GEM-201	2TM-P10
C19	20000		BPD-02	DD-203	BYB6S2	CCD-203	B-120	5HK-S20
C20	1000 10%		BPD-02	DD-203	BYB6S2	CCD-203	B-120	5HK-S20
C21	20000		BPD-01	DD-103	H-0581	CCD-103	TA-110	TG-S10
C22	10000		BPD-01	DD-103	H-0581	CCD-103	TA-110	TG-S10
C23	470 10%		D1-470	DD-471	5R5T47	CCD-471	GP347	IOTS-T47
C24	2000		BPD-002	DD-202	BYA10D2	CCD-202	B-220	5HK-D20
C25	2000		P288N-1	DF-104	CUB2P1	2DP-3-104	GEM-201	2TM-P10
C26	4700		BPD-0047	DD-472	BYA10D47M	CCD-472	B-247	5HK-D47
C27	2000		BPD-002	DD-202	BYA10D2	CCD-202	B-220	5HK-D20
C28	470 10%		D1-470	DD-471	5R5T47	CCD-471	GP347	IOTS-T47
C29	4700		BPD-0047	DD-472	BYA10D47M	CCD-472	B-247	5HK-D47
C30	1000		BPD-001	DD-102	BYA10D1	CCD-102	B-210	5HK-D10
C31	1000		BPD-001	DD-102	BYA10D1	CCD-102	B-210	5HK-D10
C32	3-35		NPO-S1.2.2	TCZ-2R2	C10V22C	CCO-2R2	CNO-522	IOTCC-V22
C33	2.2 10%		NPO-D1.68	DD-68	C10Q68C	CCO-680	CNO-468	IOTCC-Q68
C34	68 NPO 10%		BPD-01	DD-103	H-0581	CCD-103	TA-110	TG-S10
C35	10000		BPD-01	DD-103	H-0581	CCD-103	TA-110	TG-S10
C36	51 NPO 5%		BPD-01	DD-103	H-0581	CCD-103	TA-110	TG-S10
C37	10000		BPD-01	DD-103	H-0581	CCD-103	TA-110	TG-S10
C38	1000		NPO-D1.68	DD-68	C10Q68C	CCO-680	CNO-468	IOTCC-Q68
C39	68 NPO 10%		BPD-00047	DD-471	BYA10T47	CCD-471	B-347	IOTS-T47
C40	470		BPD-001	DD-102	BYA10D1	CCD-102	B-210	5HK-D10
C41	10000		BPD-01	DD-103	H-0581	CCD-103	TA-110	TG-S10
C42	10000		BPD-01	DD-103	H-0581	CCD-103	TA-110	TG-S10
C43	10000		BPD-01	DD-103	H-0581	CCD-103	TA-110	TG-S10

RESISTORS

All wattages 1/2 watt, or less, unless otherwise listed.

ITEM No.	RATING	REMARKS	REPLACEMENT DATA		
			IRC PART No.	WORKMAN TV PART No.	REMARKS
R3	2.2meg				
R4	91meg				
R5	47K				
R6	1meg				
R7	68K				
R8	100K				
R9	10K 1W				
R10	2.2meg				
R11	100K				
R12	220K				
R13	10K 1W				
R14	270K				
R15	1meg				
R16	1meg				
R17	82K				

COILS (RF-IF)

ITEM No.	USE	REPLACEMENT DATA			NOTES
		GONSET PART No.	Merit PART No.	Miller PART No.	
L1	Output Indicator	027-077			
L2	RF Choke (.56uh)	011-119	BC-560	4588	
L3	Ant.	027-028	BC-565	4609	
L4	RF Choke (5.6uh)	012-068	TV-118	6171-A	
L5	RF Choke (1.5uh)	027-045	BC-562	4604	
L6	RF Choke (1.5uh)	014-030			
L7	1st IF	014-030			
L8	2nd IF	014-030			
L9	3rd IF	014-030			
L10	RF Choke (5.6uh)	027-028	BC-565	4609	
L11	Osc. Plate	012-073	TV-118	6171-A	
L12	RF Choke (.47uh)	027-073	4588		
L13	RF Choke (5.6uh)	027-028	BC-565	4609	
L14	RF Choke (15uh)	027-032	BC-565	4624	
L15	Hash Choke (65uh)	027-027			

PARTS LIST AND DESCRIPTIONS (Continued)

TRANSFORMER (POWER)

ITEM No.	RATING		REPLACEMENT DATA				NOTES
	PRI.	SEC. 1	GONSET PART No.	Merit PART No.	Stancor PART No.	Thordarson PART No.	
T1	12.6VCT ② 2.8A ③ .095A	SFC. 2	271-022 ①				

① Part #271-025 used in Model GIL-3303 (L17V)
 Part #271-026 used in Model GIL-3305 (6V).

TRANSFORMER (AUDIO OUTPUT)

ITEM No.	IMPEDANCE		REPLACEMENT DATA				NOTES
	PRI.	SEC.	GONSET PART No.	Merit PART No.	Stancor PART No.	Thordarson PART No.	
T2	2700Ω	3-4Ω	272-004		A-3876		

SPEAKER

ITEM No.	TYPE		REPLACEMENT DATA		NOTES
	SIZE	FIELD	GONSET PART No.	QUAM PART No.	
SPI	4"	PM	152-015 *	4A10T *	* Weatherproof Cone

COMPONENT COMBINATIONS

ITEM No.	USE	DESCRIPTION	GONSET PART No.	REPLACEMENT DATA
K1	Noise Clipper Network	(2) 100mmf, 10000mmf, (2) 220K (3) 1meg	069-003	

VIBRATOR

ITEM No.	TYPE	INPUT VOLTS-FREQUENCY	REPLACEMENT DATA				NOTES
			GONSET PART No.	CORNELL-DUBILIER PART No.	MALLORY PART No.	RADIART PART No.	
M1	Interrupter	12.3V 6.3V	115% 115%	G1601 J601	G1601 J601	6301 5301	Model 3304 Model 3305

FUSES

ITEM No.	TYPE	RATING	REPLACEMENT DATA					
			GONSET PART No.	HOLDER	FUSE	BUSS PART No.		
M2	SFE	10A *			307010 *	155009 *	SFE 10 *	HHH *
	SFE	32V			(SFE 10A 32V)	155020 *	SFE 20 *	HRJ *
	SFE	20A *			31J020 *	155020 *	SFE 20A *	
	3AG	32V 1A †			(SFE 20A 32V) 315001 †		AGC 1 †	
		250V			(3AG 1A 250V)			

* Model 3304
 † Model 3305
 ‡ Model 3303

MISCELLANEOUS

ITEM No.	PART NAME	GONSET PART No.	NOTES
M3	Crystal		
M4	Crystal Relay	111-019	Receive (order by desired Channel Freq.)
M5	Relay	111-082	Transmit (order by desired Channel Freq.)
M6	Microphone	113-014 (or) 113-015	Models 3303 & 3304 Model 3305

CABINETS & CABINET PARTS

(When Ordering Cabinets & Cabinet Parts, Specify Model, Chassis & Color)

NAME	PART NO.	DESCRIPTION
Front Panel Cabinet	505-203 465-056	

WIRING DATA

General-use Unshielded Hook-up Wire Use BELDEN No. 8530 (Solid) Available in Ten Colors
 8524 (Stranded) Available in Ten Colors
 Shielded Hook-up Wire Use BELDEN No. 8885
 Bonding Strap Use BELDEN No. 8861
 Power Cord Use BELDEN No. 1765-B (6 Ft. Length)
 1725-K (7½ Ft. Length)