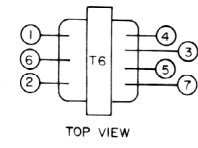
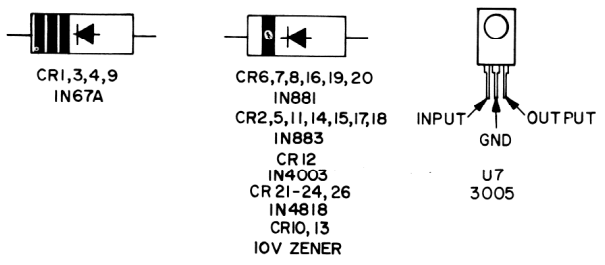
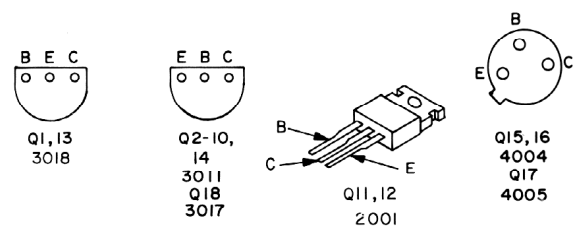


- NOTES:
- ALL RESISTOR VALUES IN OHMS UNLESS OTHERWISE SPECIFIED.
 - ALL CAPACITOR VALUES IN MICROFARADS UNLESS OTHERWISE SPECIFIED.
 - VOLTAGES TAKEN USING H.P. 410C, MEASURED WITH RESPECT TO CHASSIS GROUND. VOLTAGES MAY VARY $\pm 10\%$ FROM TYPICAL READINGS SHOWN. RECEIVER - NO SQUELCH (CONTROL FULL LEFT). NO SIGNAL. TRANSMITTER - 50 OHM LOAD CONNECTED TO J2. KEYED. NO MODULATION.
 - SQUELCHED CONDITION VOLTAGE READING.
 - * RF VOLTAGE READINGS TAKEN WITH BOONTON 91C. RF VOLTMETER (100:1 PROBE). UNMODULATED 3.7 WATT RF POWER OUTPUT.
 - S2A AND B ARE SHOWN IN CHANNEL 1 POSITION. S2A IS VIEWED FROM THE BOTTOM AND S2B IS VIEWED FROM THE TOP.
 - C79 IS USED IN THE MESSENGER 130A ONLY.

MESSENGER 130/130A SCHEMATIC DIAGRAM
(FOR UNITS WITH "B" OR LATER MODEL DESIGNATOR
ON SERIAL NUMBER STICKER)



CRYSTAL SYNTHESIZER SCHEME					
CHANNEL	HF CRYSTAL	RECEIVE L.F. CRYSTAL	RECEIVE OUTPUT	TRANSMIT L.F. CRYSTAL	TRANSMIT OUTPUT
1	32.700	5.1934	26.5096	5.735	26.965
2	32.700	6.1804	26.5196	5.725	26.975
3	32.700	5.1704	26.5296	5.715	26.985
4	32.700	6.1504	26.5496	5.695	27.005
5	32.750	6.1904	26.5596	5.735	27.015
6	32.750	6.1804	26.5696	5.725	27.025
7	32.750	6.1704	26.5796	5.715	27.035
8	32.750	6.1504	26.5996	5.695	27.055
9	32.800	6.1904	26.6096	5.735	27.055
10	32.800	6.1804	26.6196	5.725	27.075
11	32.800	6.1704	26.6296	5.715	27.085
12	32.800	6.1504	26.6496	5.695	27.105
13	32.850	6.1904	26.6596	5.735	27.115
14	32.850	6.1804	26.6696	5.725	27.125
15	32.850	6.1704	26.6796	5.715	27.135
16	32.850	6.1504	26.6996	5.695	27.155
17	32.900	6.1904	26.7096	5.735	27.165
18	32.900	6.1804	26.7196	5.725	27.175
19	32.900	6.1704	26.7296	5.715	27.185
20	32.900	6.1504	26.7496	5.695	27.205
21	32.950	6.1904	26.7596	5.735	27.215
22	32.950	6.1804	26.7696	5.725	27.225
23	32.950	6.1504	26.7996	5.695	27.255

NOTE: All frequencies are in MHz.