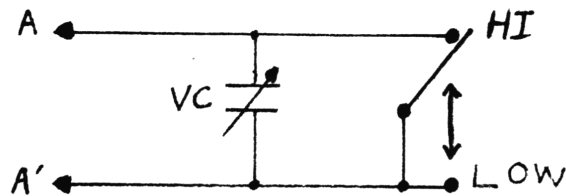
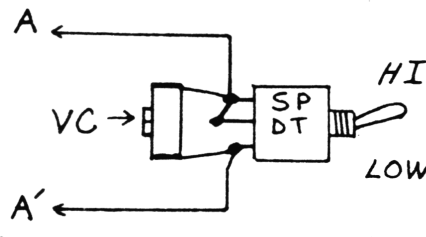


## HOW TO MAKE UP THE SPDT SWITCH

Kits may come with a two post or a three post trimmer capacitor. Electronically, they will connect like this:



and Physically like this:



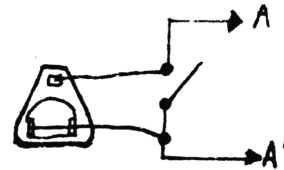
On the three leg trimmer capacitors, turn the bottom legs inward from this



to this.



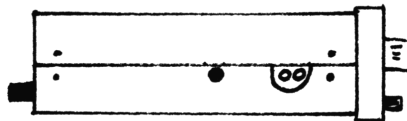
Bottom View



Most mobile CB's are mounted with the component side of the board down. Take this in account when mounting your switches.

## PREPARING THE UNIT FOR THE KIT

Use a hole saw or chassis punch 1" in size and cut the component side cover as illustrated, at a point where switches can be accommodated without interfering with alignment, etc.



Use the two lock washers for proper spacing and as a guide for drilling and in mounting the switches.

**CAUTION:** When mounting the switches, do not apply pressure on the body part of the switch. Use the locking washers and apply torque on the nuts only. Failure to follow this advice could result in a broken switch.