

## MIDLAND 78-999 PLL 02A (REF. Vol. 3)

RX: RV10; RF Gain Range.  
RV6; SSB AGC.  
RV7; AM SQ. Range.  
RV8; SSB SQ. Range.  
RV5; AM S Meter.  
RV4; SSB S Meter.

TX: Peak T204, T205, T3, T209, L209, L212, L214, on USB.  
RV1,RV2; Carrier Balance.  
RV206; Final Bias adj. for .7v @ base of Q208.  
RV3; SSB Mod. Gain.  
RV201; SSB ALC.  
RV9; AM AMC-or remove C71.  
RV11; Mod. Meter.  
RV202; RF Power Meter.

### SLIDER:

1. Run a wire from the unused terminal on VR4 Clarifier Control to 8 Volt source located at the emitter of Q216.
2. Clip R221.
3. Clip D205.
4. Unit now slides. For more slide, replace D203 with Super Diode.

## MIDLAND 79-891 02A

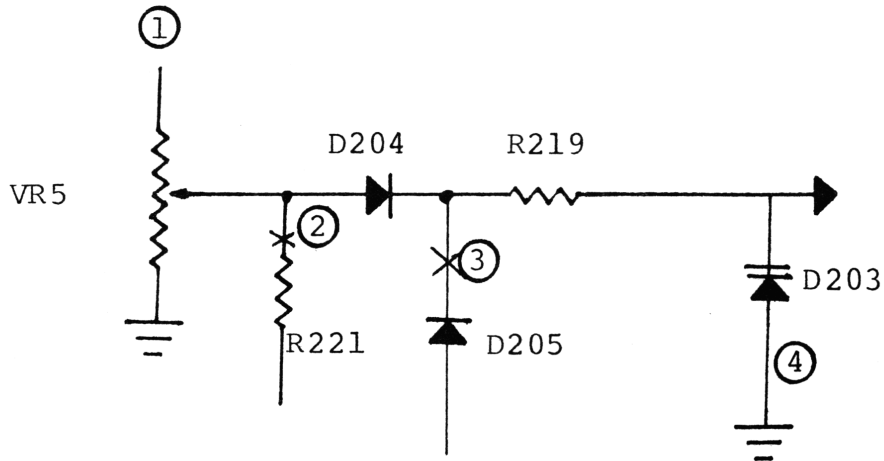
RX: RV6; SSB AGC.  
RV7; AM Squelch Range  
RV8; SSB Squelch Range  
RV5; AM S Meter  
RV4; SSB S Meter

TX: Peak T204 on Ch. 40 USB.  
Peak T205 on Ch. 1, USB.  
Peak T3, T209, L212, L214, on Ch. 19 USB.  
RV1, RV2 Carrier Balance

Adjust R204 with VOM at base of Q208 on USB no signal input for .7 Volts.  
RV3,RV201;ALC.  
RV9; AM Power.  
RV202; RF Power Meter.

Clarifier:

1. Run a wire from unused terminal on VR5 clarifier control to emitter of Q216.
2. Clip R221.
3. Clip D205.
4. D203 may be changed to a Super Diode.



See Volume 3 for Channel Modification on 02A Chip.