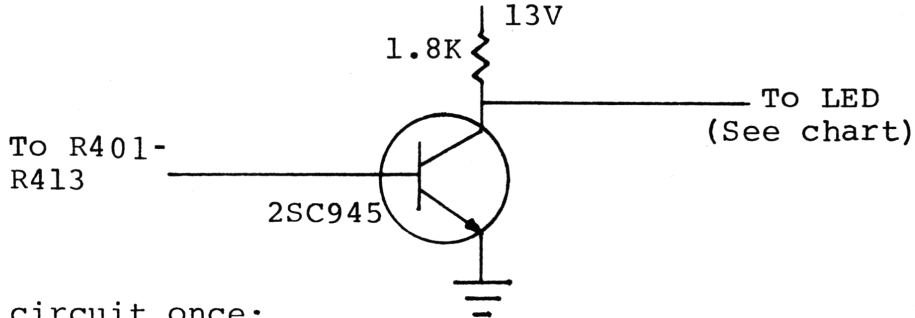


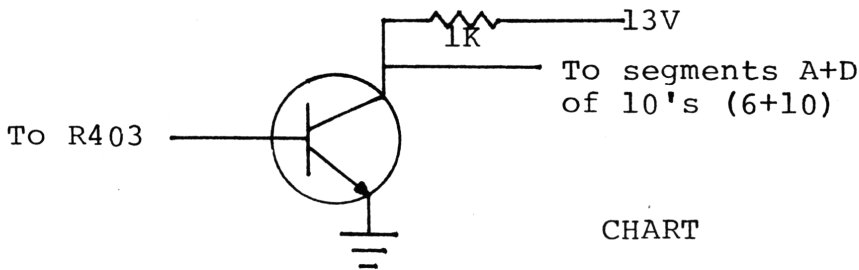
READOUT MODIFICATION

Here is a cute idea on how to eliminate Red LED washout on bright days. A green 2 digit LED is available from Midland (used in 7001 SSB), that can replace your red ones. The only catch is that the red readouts that are commonly used are common anode and the green one from Midland is common cathode.

But do not despair! There is still a way to use it simply by inverting the input level. Build this circuit 13 times:



Build this circuit once:

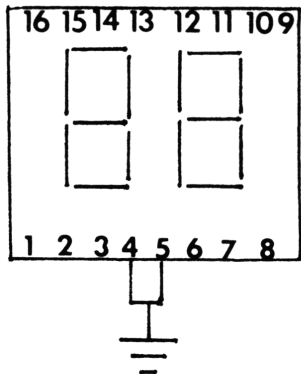


CHART

What would be really neat is a green common anode dual digit display for direct replacement. Anyone know of a source?

R401...11	R407...8
R402...12	R408...7
R403...10,6	R409...3
R404...2	R410...16
R405...1	R411...15
R406...9	R412...13
R413...14	

Resistor numbers are referenced to the President Washington for this example.



Midland Part

Number 77-202020