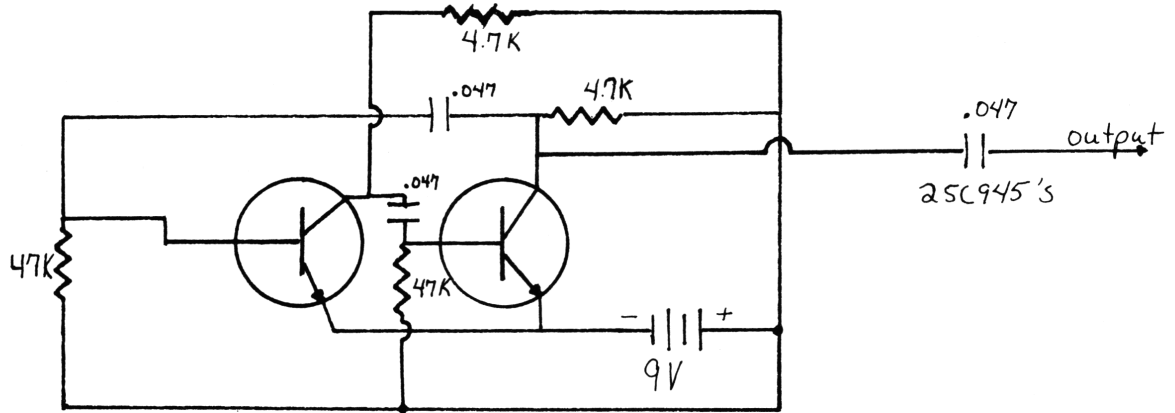


Signal Injector

Build this simple device to use as a signal injector for troubleshooting. The output is rich in harmonics.



Parts Needed

2	2SC945
2	47K ohm
2	4.7K ohm
3	.047 _u f disc capacitor
1	perfboard (1X1)
1	9Volt battery
1	9Volt battery clip
1	Mini-box