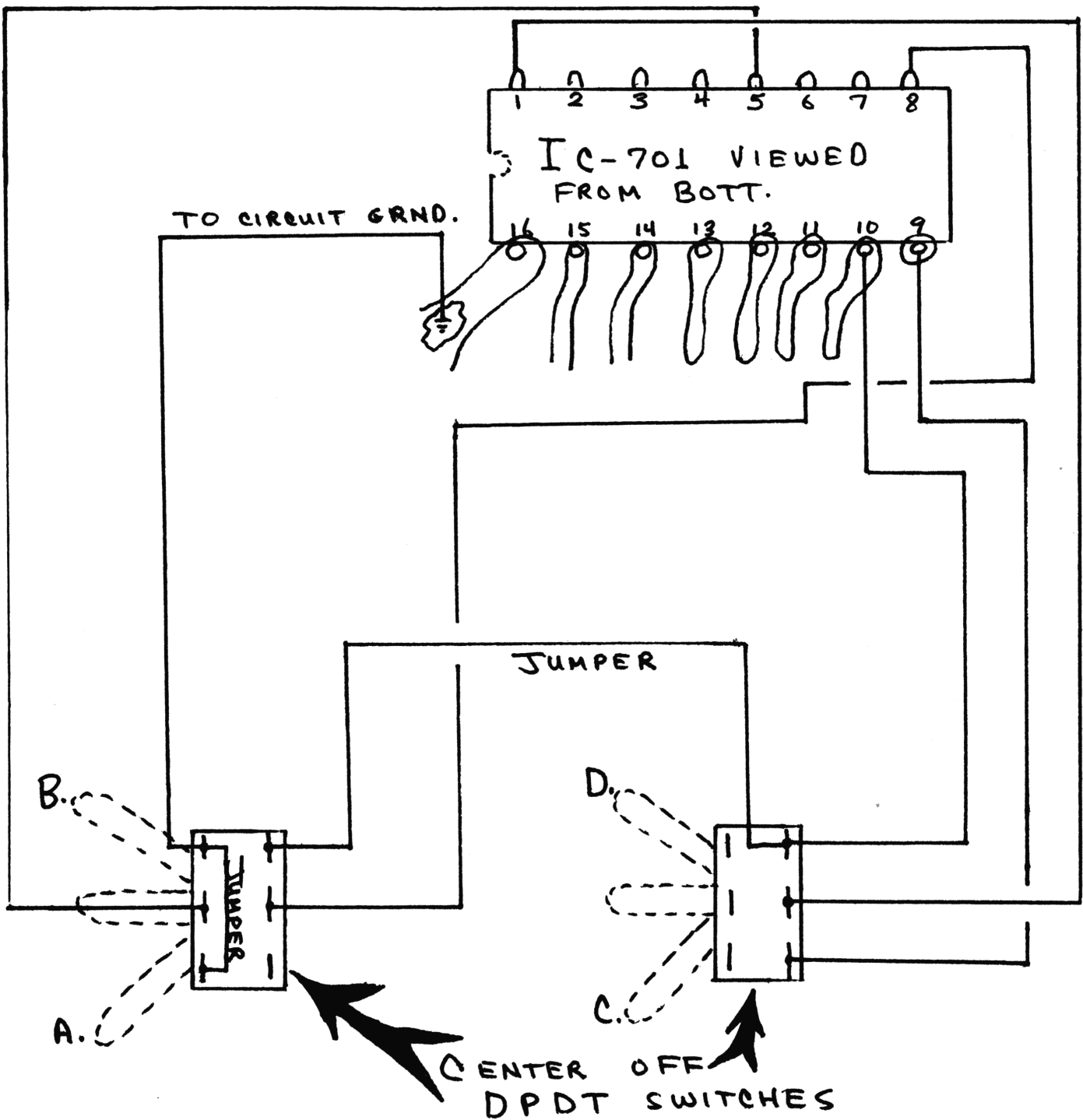


SWITCH WIRING DIAGRAM FOR SEARS ROADTALKER 40 (SSB)

MODEL #934-3826-0700



NOTE: PIN #5 and #9 are blank before modification. VCO adjustment is necessary.

SWITCH POSITION

"A"		"B"		"A & D"		"B & D"		"C"		"D"	
CH.	FREQ.	CH.	FREQ.	CH.	FREQ.	CH.	FREQ.	CH.	FREQ.	CH.	FREQ.
1	26.325			1	26.645					1	27.605
2	26.330			2	26.650					2	27.615
3	26.335			3	26.655					3	27.625
4	26.345			4	26.665					4	27.645
5	26.350			5	26.670					5	27.655
6	26.355			6	26.675					6	27.665
7	26.360			7	26.680					7	27.675
8	26.370			8	26.690					8	27.695
9	26.375			9	26.695					9	27.705
10	26.380			10	26.700					10	27.715
11	26.385			11	26.705					11	27.725
12	26.395	12	26.555	12	26.715	12	26.875	12	27.425	12	27.745
13	26.400	13	26.560	13	26.720	13	26.880	13	27.435	13	27.755
14	26.405	14	26.565	14	26.725	14	26.885	14	27.445	14	27.765
15	26.410	15	26.570	15	26.730	15	26.890	15	27.455	15	27.775
16	26.420	16	26.580	16	26.740	16	26.900	16	27.475	16	27.795
17	26.425	17	26.585	17	26.745	17	26.905	17	27.485	17	27.805
18	26.430	18	26.590	18	26.750	18	26.910	18	27.495	18	27.815
19	26.435	19	26.595	19	26.755	19	26.915	19	27.505	19	27.825
20	26.445	20	26.605	20	26.765	20	26.925	20	27.525	20	27.845
21	26.450	21	26.610	21	26.770	21	26.930	21	27.535	21	27.855
22	26.455	22	26.615	22	26.775	22	26.935	22	27.545	22	27.865
23	26.470	23	26.630	23	26.790	23	26.950	23	27.575	23	27.895
24	26.460	24	26.620	24	26.780	24	26.940	24	27.555	24	27.875
25	26.465	25	26.625	25	26.785	25	26.945	25	27.565	25	27.885
26	26.475	26	26.635	26	26.795	26	26.955	26	27.585	26	27.905
27	26.480	27	26.640	27	26.800	27	26.960	27	27.595	27	27.915
28	26.485			28	26.805					28	27.925
29	26.490			29	26.810					29	27.935
30	26.495			30	26.815					30	27.945
31	26.500			31	26.820					31	27.955
32	26.505			32	26.825					32	27.965
33	26.510			33	26.830					33	27.975
34	26.515			34	26.835					34	27.985
35	26.520			35	26.840					35	27.995
36	26.525			36	26.845					36	28.005
37	26.530			37	26.850					37	28.015
38	26.535			38	26.855					38	28.025
39	26.540			39	26.860					39	28.035
40	26.545			40	26.865					40	28.045