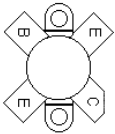


25C2879 25C2290

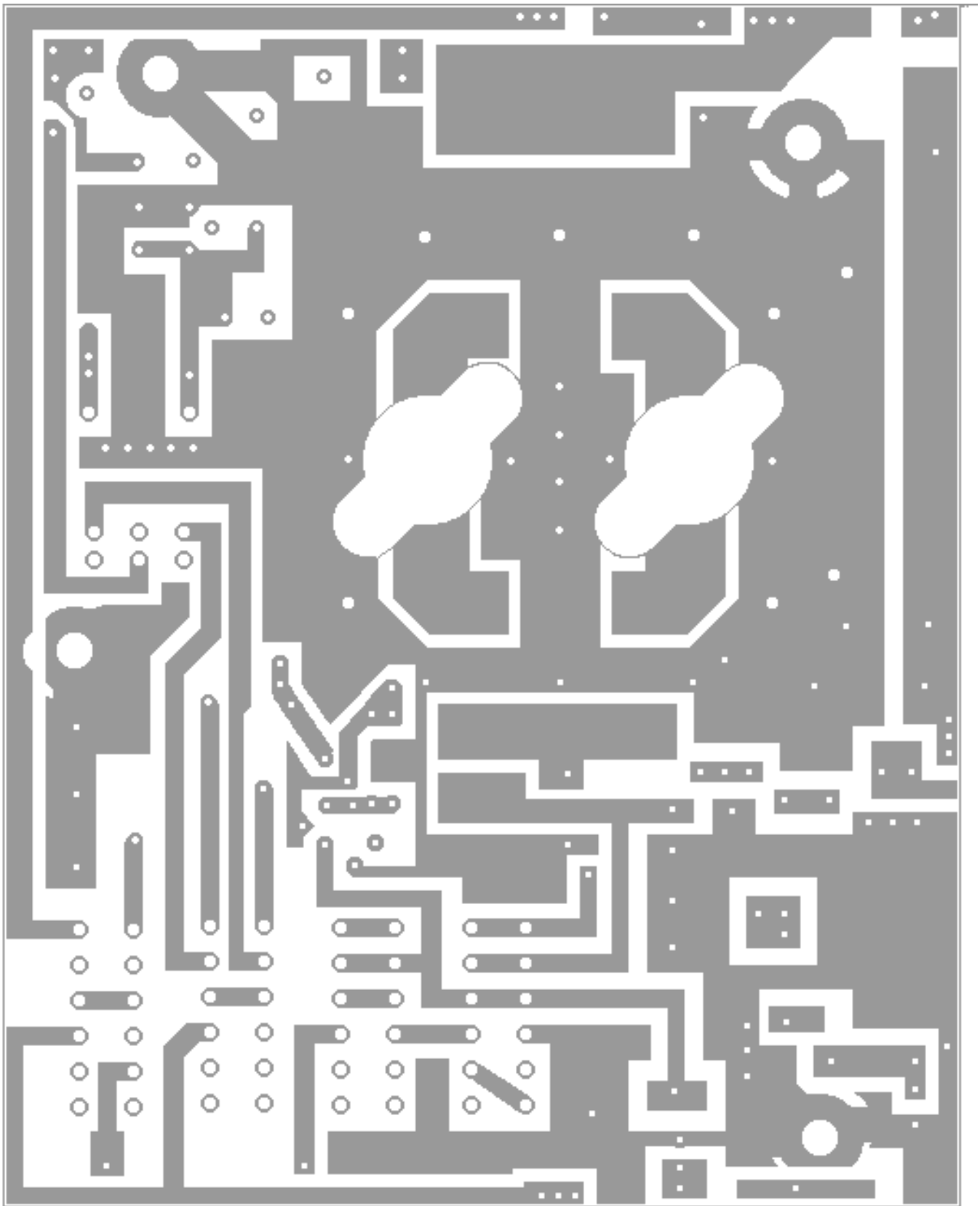


- NOTES:
1. Bifilar on 30kHz Ferrite toroid core 1/2" O.D., 1/4" I.D., 1/8" x 1/8" thick
 2. S.M. = Silver Mica
 - SEMCO = Stacked Mica
 - G.C. = Glass Carbon
 3. T1 - T8 : Stackpoles
 4. Heat Sink 1 1/4" Deep 9 1/2" x 6 3/4"
 5. POT could be 250ohm 2W then use the 100 mod.
 6. This Cap is in some (but not most) Units.
 7. This Cap is in the new units before the OSC board is removed in the conversion
 8. Wirewound 250hm 5W

THIS SCHEMATIC WAS A JOINT PROJECT BETWEEN RUSSELL E. CLIFT (AB7E) AND CBTricks.com. Although the greatest care and time was put in doing this we cannot guarantee it's 100% right. But it's real close if you find a problem e-mail me at webmaster@cbtricks.com.

TEXAS STAR 667 LINEAR AMPLIFIER
 CBTricks.com
 Rev. #1.1
 Copyright © 2001 CBTricks.com All rights reserved
 Sept. 1, 2001

Top View



Bottom View

