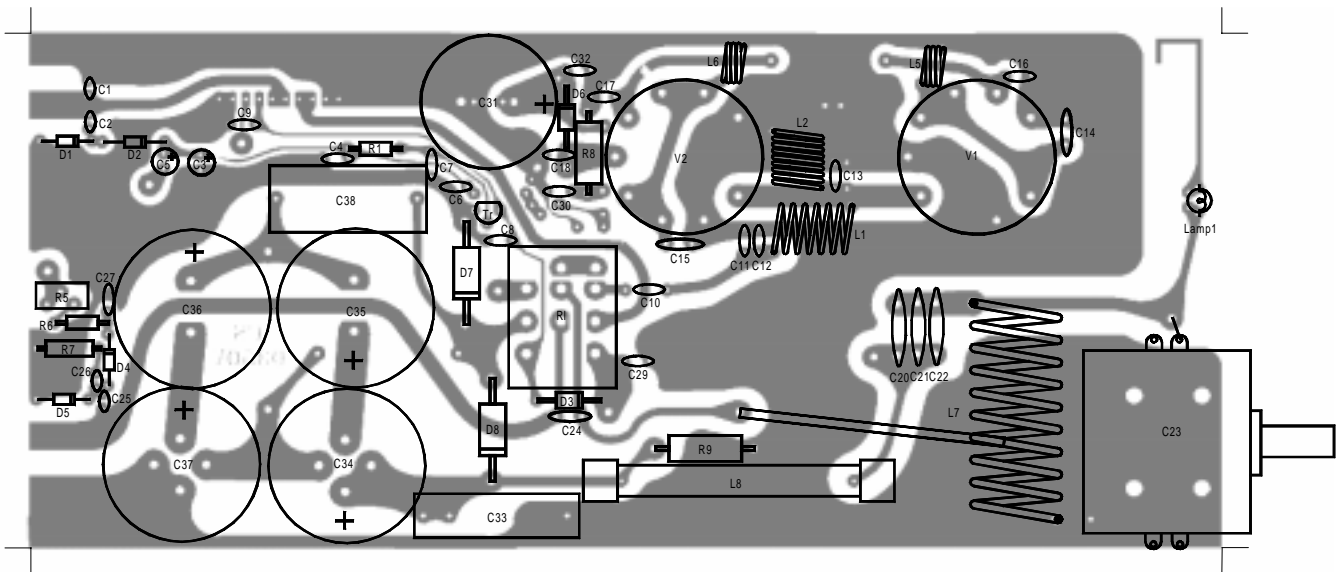
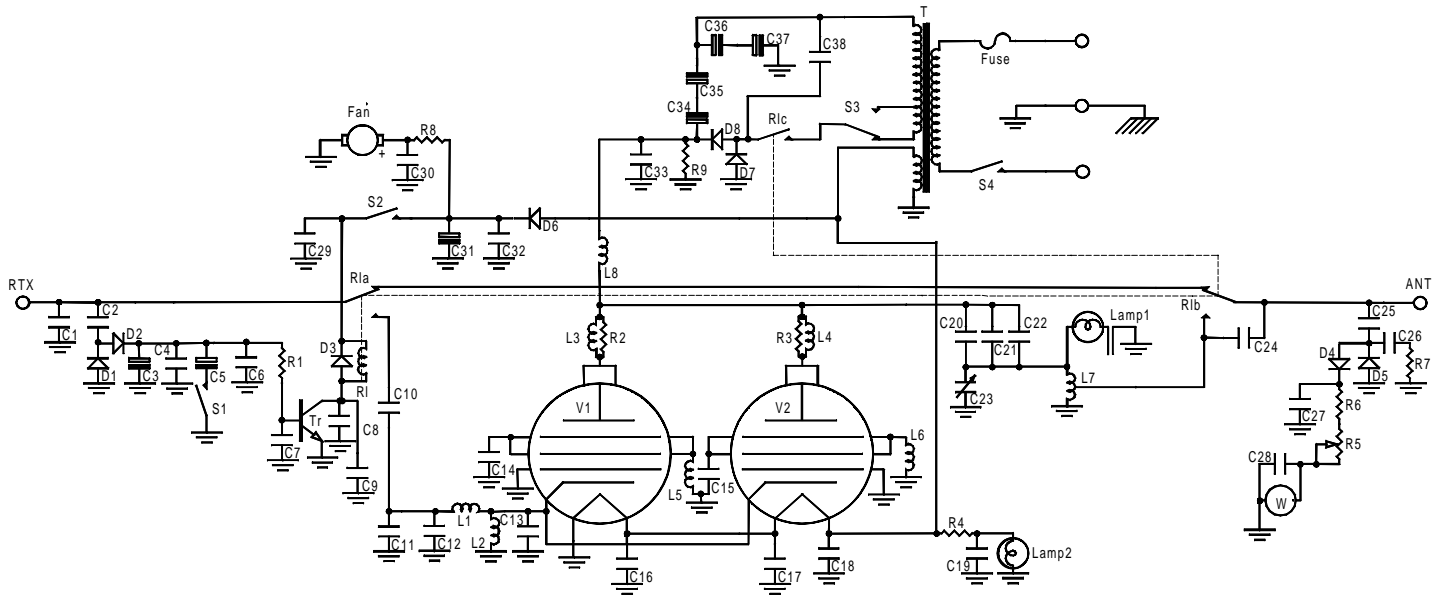


Mod. 350 linear amplifier

Schematic diagram

Version 1.00



List of components

C ₁	= 33 pF	50 V	N750	D ₃ = D ₆	= 1N4004
C ₂	= 8,2 pF	50 V	N750	D ₇ = D ₈	= BY 255
C ₃	= 10 μF	25 V		Tr	= BC 547
C ₄	= 10 nF	50 V		V ₁ = V ₂	= EL 509 - EL 519
C ₅	= 47 μF	25 V		L ₁	= 6 turns φ 8 mm wire φ 0.8 mm
C ₆	= 10 nF	50 V		L ₂	= 9 turns φ 8 mm wire φ 0.8 mm
C ₇	= 10 nF	50 V		L ₃ = L ₄	= 3 turns wound on resistor, wire φ 0.8 mm
C ₈	= 10 nF	50 V		L ₅ = L ₆	= 3 turns φ 6 mm wire φ 0.8 mm
C ₉	= 100 nF	50 V		L ₇	= 9 turns φ 13 mm wire φ 1.5 mm tap 4 ^a turns
C ₁₀	= 10 nF	50 V		L ₈	= RF impedance block
C ₁₁	= 120 pF	50 V	N750	R ₁	= Relè 12 V 5513
C ₁₂	= 120 pF	50 V	N750	Fuse	= 3 A
C ₁₃	= 100 pF	50 V	N750	Lamp ₁	= 24 V
C ₁₄	= 220 pF	500 V	N750	Lamp ₂	= Meter lamp
C ₁₅	= 220 pF	500 V	N750	S ₁	= Switch 3A (AM - SSB)
C ₁₆	= 100 nF	50 V		S ₂	= Switch 3A (ON - St. By)
C ₁₇	= 100 nF	50 V		S ₃	= Switch 3A (HI - LOW)
C ₁₈	= 100 nF	50 V		S ₄	= Switch 3A (ON - OFF)
C ₁₉	= 100 nF	50 V		T	= Transformator IN 220 OUT 0-250-300V 0-12 V
C ₂₀	= 4,7 nF	1000 V		Fan	= Fan 12 V
C ₂₁	= 4,7 nF	1000 V			
C ₂₂	= 4,7 nF	1000 V			
C ₂₃	= Variable condensator		50 pF		
C ₂₄	= 100 pF	500 V	N750		
C ₂₅	= 2,2 pF	50 V	N750		
C ₂₆	= 33 pF	50 V	N750		
C ₂₇	= 100 nF	50 V			
C ₂₈	= 100 nF	50 V			
C ₂₉	= 100 nF	50 V			
C ₃₀	= 10 nF	50 V			
C ₃₁	= 470 μF	35 V			
C ₃₂	= 100 nF	50 V			
C ₃₃	= 18 nF	1000V			
C ₃₄	= 470 μF	200 V			
C ₃₅	= 470 μF	200 V			
C ₃₆	= 470 μF	200 V			
C ₃₇	= 470 μF	200 V			
C ₃₈	= 470 nF	630V~			
R ₁	= 2,2 KΩ	¼W			
R ₂	= 47 Ω	2W			
R ₃	= 47 Ω	2W			
R ₄	= 68 Ω	2W			
R ₅	= Trimmer	220 KΩ			
R ₆	= 47 KΩ	¼W			
R ₇	= 27 Ω	½W			
R ₈	= 47 Ω	1W			
R ₉	= 470 KΩ	2W			
D ₁ = D ₂ = D ₄ = D ₅	= 1N4148				