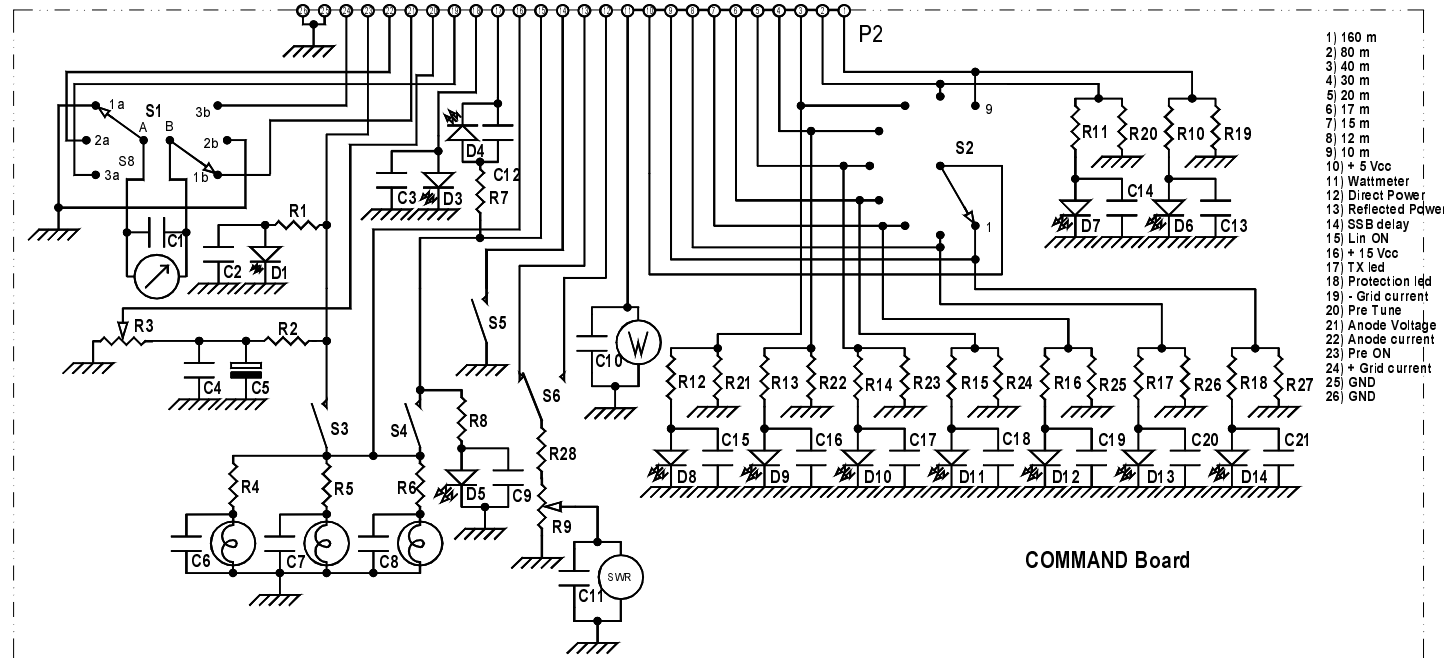
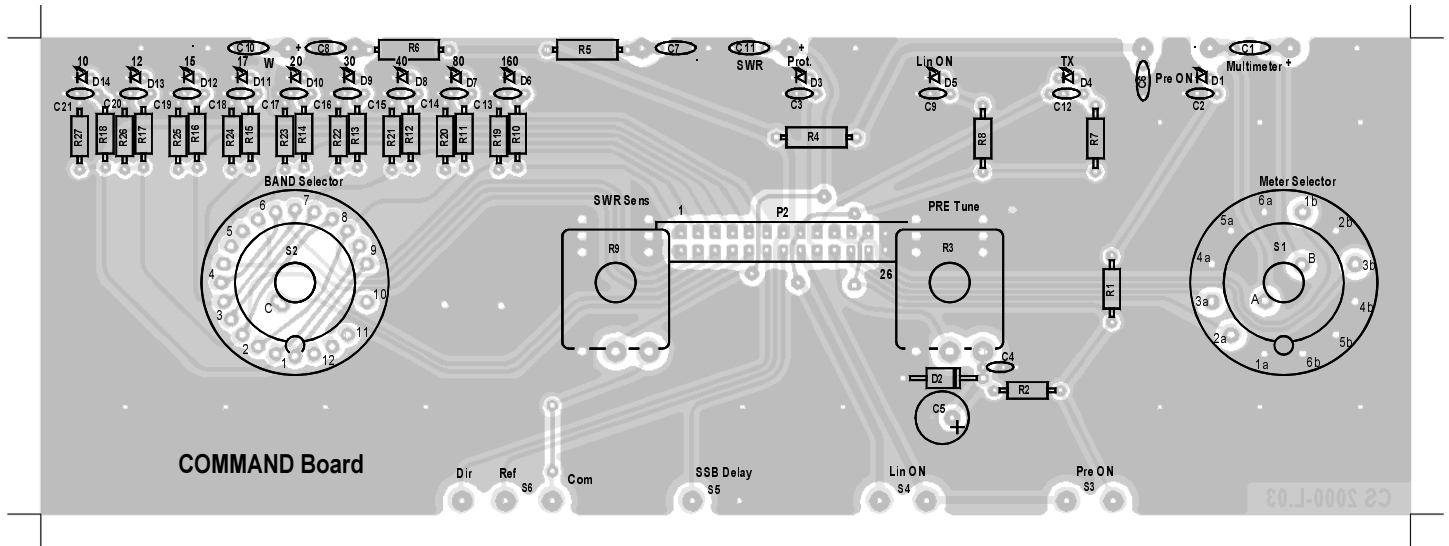


KLV 2000 L Command board

Version 1.01



LIST OF Components

C 1 =	100 nF	50 V	R 27 =	1,0 K Ω	¼ W
C 2 =	10 nF	50 V	R 28 =	10 K Ω	¼ W
C 3 =	10 nF	50 V	D 1 =	High brightness Yellow LED	
C 4 =	10 nF	50 V	D 3 =	High brightness Red LED	
C 5 =	470 μ F	16 V	D 4 =	High brightness Red LED	
C 6 =	100 nF	50 V	D 5 =	High brightness Green LED	
C 7 =	100 nF	50 V	D 6 =	High brightness Green LED	
C 8 =	100 nF	50 V	D 7 =	High brightness Green LED	
C 9 =	10 nF	50 V	D 8 =	High brightness Green LED	
C 10 =	100 nF	50 V	D 9 =	High brightness Green LED	
C 11 =	100 nF	50 V	D 10 =	High brightness Green LED	
C 12 =	10 nF	50 V	D 11 =	High brightness Green LED	
C 13 =	10 nF	50 V	D 12 =	High brightness Green LED	
C 14 =	10 nF	50 V	D 13 =	High brightness Green LED	
C 15 =	10 nF	50 V	D 14 =	High brightness Green LED	
C 16 =	10 nF	50 V	S 1 =	Meter selector switch (COM 190900010)	
C 17 =	10 nF	50 V	S 2 =	Band selector switch (COM 190800010)	
C 18 =	10 nF	50 V			
C 19 =	10 nF	50 V			
C 20 =	10 nF	50 V			
C 21 =	10 nF	50 V			
R 1 =	1,2 K Ω	¼ W			
R 2 =	10 Ω	¼ W			
R 3 =	Potentiometer 4,7 K Ω (POT 1811004/7)				
R 4 =	47 Ω	½ W			
R 5 =	47 Ω	½ W			
R 6 =	47 Ω	½ W			
R 7 =	1,2 K Ω	¼ W			
R 8 =	1,2 K Ω	¼ W			
R 9 =	Potentiometer 4,7 K Ω (POT 1811004/7)				
R 10 =	270 Ω	¼ W			
R 11 =	270 Ω	¼ W			
R 12 =	270 Ω	¼ W			
R 13 =	270 Ω	¼ W			
R 14 =	270 Ω	¼ W			
R 15 =	270 Ω	¼ W			
R 16 =	270 Ω	¼ W			
R 17 =	270 Ω	¼ W			
R 18 =	270 Ω	¼ W			
R 19 =	1,0 K Ω	¼ W			
R 20 =	1,0 K Ω	¼ W			
R 21 =	1,0 K Ω	¼ W			
R 22 =	1,0 K Ω	¼ W			
R 23 =	1,0 K Ω	¼ W			
R 24 =	1,0 K Ω	¼ W			
R 25 =	1,0 K Ω	¼ W			
R 26 =	1,0 K Ω	¼ W			