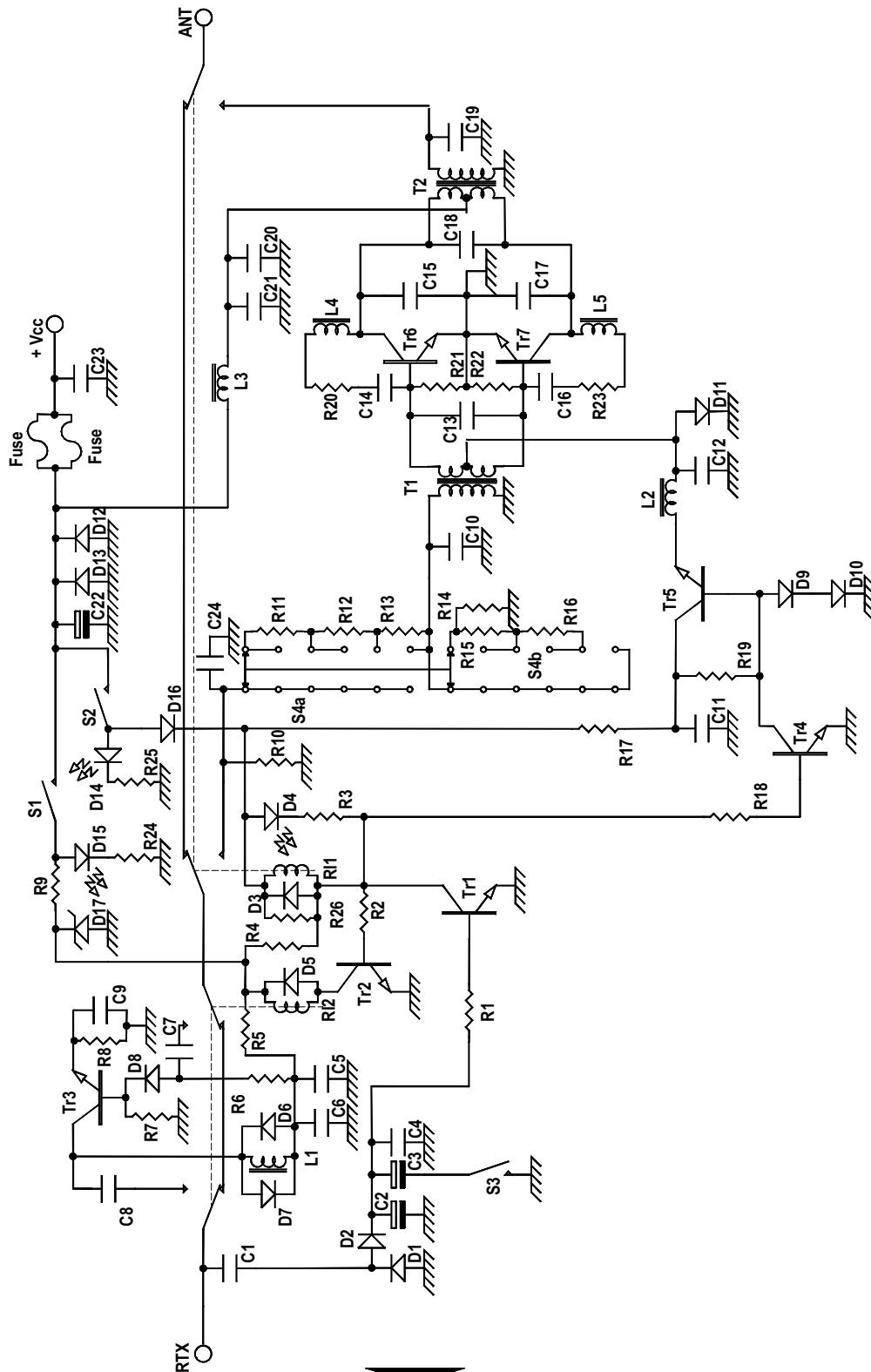


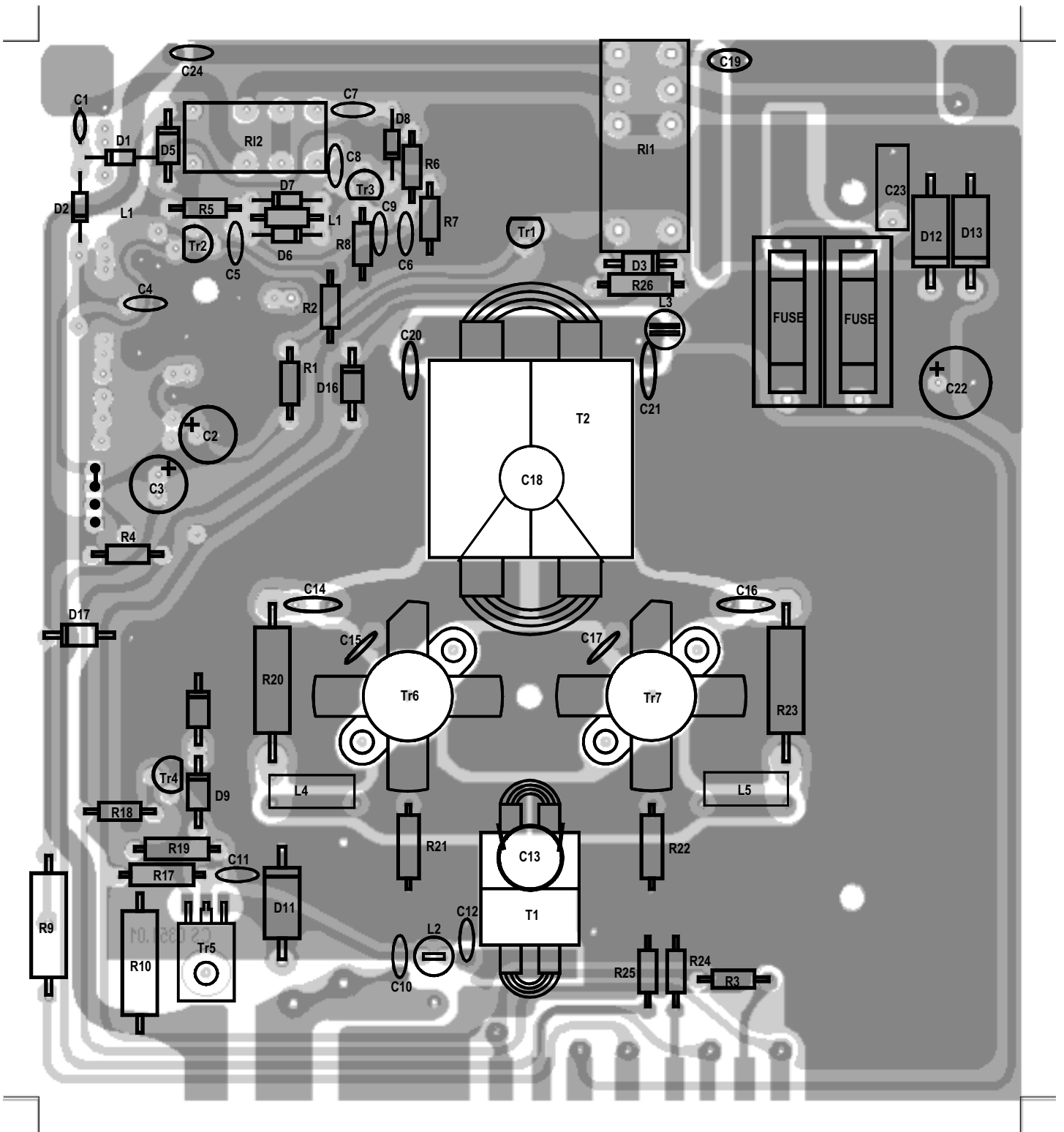
KL 500/24 linear amplifier

Schematic diagram

SD 1407

Version 2.00-s





List of components

C ₁	= 8,2 pF	50 V		R ₂₅	= 2,2 K Ω	¼W
C ₂	= 4,7 μ F	16 V		R ₂₆	= 2,2 K Ω	½W
C ₃	= 33 μ F	16 V		D ₁	= 1N4148	
C ₄	= 10 nF	50 V		D ₂	= 1N4148	
C ₅	= 10 nF	50 V		D ₃	= 1N4004	
C ₆	= 10 nF	50 V		D ₄	= LED red	
C ₇	= 56 pF	50 V	N750	D ₅	= 1N4004	
C ₈	= 150 pF	50 V	N750	D ₆	= 1N4148	
C ₉	= 470 pF	50 V	N750	D ₇	= 1N4148	
C ₁₀	= 150 pF	50 V	N750	D ₈	= 1N4148	
C ₁₁	= 100 nF	50 V		D ₉	= 1N4004	
C ₁₂	= 10 nF	50 V		D ₁₀	= 1N4004	
C ₁₃	= 3 x 470 pF	50 V		D ₁₁	= 1N5400	
C ₁₄	= 47 nF	50 V		D ₁₂	= 1N5400	
C ₁₅	= 220 pF	500 V	N750	D ₁₃	= 1N5400	
C ₁₆	= 47 nF	50 V		D ₁₄	= LED green	
C ₁₇	= 220 pF	500 V	N750	D ₁₅	= LED yellow	
C ₁₈	= 220 pF	500 V	N750	D ₁₆	= 1N4004	
C ₁₉	= 47 pF	1000 V	N750	D ₁₇	= Zener 12 V 1,3 W	
C ₂₀	= 100 nF	50 V		Tr ₁	= BC 547	
C ₂₁	= 100 nF	50 V		Tr ₂	= BC 547	
C ₂₂	= 470 μ F	35 V		Tr ₃	= BF 199	
C ₂₃	= 470 nF	63 V	Polyester	Tr ₄	= BC 547	
C ₂₄	= 82 pF	50 V	N750	Tr ₅	= BD 179	
R ₁	= 2,2 K Ω	¼W		Tr ₆	= SD 1446	
R ₂	= 10 K Ω	¼W		Tr ₇	= SD 1446	
R ₃	= 2,2 K Ω	¼W		L ₁	= 10 μ H	
R ₄	= 2,2 K Ω	¼W		L ₂	= VK 200 1 wire	
R ₅	= 100 Ω	¼W		L ₃	= VK 200 2 wires	
R ₆	= 12 K Ω	¼W		L ₄	= VK 200	
R ₇	= 2,2 K Ω	¼W		L ₅	= VK 200	
R ₈	= 100 Ω	¼W		Rl ₁	= Relè 24 V 4052	
R ₉	= 180 Ω	2W		Rl ₂	= Relè 12 V 3022	
R ₁₀	= 150 Ω	2W		Fuse	= 2 x 8A	
R ₁₁	= 10 Ω	2W		S ₁	= Switch 3A (Pre ON)	
R ₁₂	= 10 Ω	2W		S ₂	= Switch 3A (Lin ON)	
R ₁₃	= 10 Ω	2W		S ₃	= Switch 3A (SSB)	
R ₁₄	= 47 Ω	2W		S ₄	= Switch 6 positions	
R ₁₅	= 27 Ω	2W		T ₁	= Input transformer	
R ₁₆	= 100 Ω	2W		T ₂	= Output transformer	
R ₁₇	= 1,0 Ω	½W				
R ₁₈	= 12 K Ω	¼W				
R ₁₉	= 3,3 K Ω	½W				
R ₂₀	= 68 Ω	2W				
R ₂₁	= 10 Ω	½W				
R ₂₂	= 10 Ω	½W				
R ₂₃	= 68 Ω	2W				
R ₂₄	= 2,2 K Ω	¼W				